

We are committed to helping all patients access our medicines, regardless of their ability to pay.



BioOncologyAccessSolutions.com  
Mapped!

---

Get connected with resources and information on coverage, reimbursement, and patient assistance.

Brought to you by the publisher of  
**Oncology**  
NET GUIDE

Mapped! is a registered trademark of MJH & Associates, Inc, Plainsboro, NJ 08536

© 2010 Genentech USA, Inc. All rights reserved. BIO0000016000 9/10 Printed in USA.

**Genentech**  
BIOONCOLOGY™

**Access Solutions™**  
Treatment made possible.

# BioOncologyAccessSolutions.com Mapped!

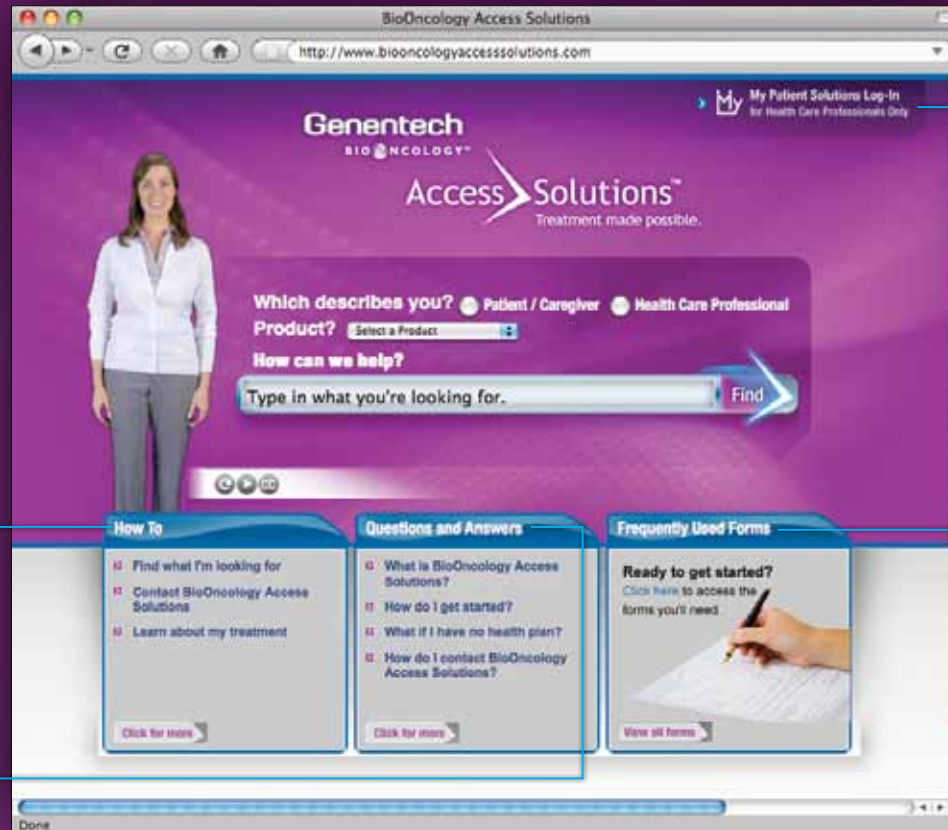
**BioOncologyAccessSolutions.com** is designed to give you, your practice, and your patients helpful tools and information to access our therapies. Use the search bar to quickly find a variety of resources.

## How To

Find information here on how to enroll a patient in Genentech BioOncology Access Solutions, start a benefits investigation, obtain prior authorization, and assist uninsured patients.

## Questions and Answers

Here, visitors can review a list of common questions and answers, including information on how to get started with our programs, information on our co-pay card programs, and how to contact Genentech BioOncology Access Solutions.



## My Patient Solutions

My Patient Solutions gives you the ability to manage your patients' cases, from enrollment to establishing coverage, and beyond. When you sign into My Patient Solutions, you gain online access to your open, closed, and pending patient cases, and much more!



## Frequently Used Forms

Access frequently used forms and documents, including the Statement of Medical Necessity, Patient Authorization and Notice of Release of Information, and Sample Claim forms. Documents can be completed, submitted, printed, and saved online.

**Genentech**  
BIOONCOLOGY™

**Access Solutions™**  
Treatment made possible.