

Herceptin Adjuvant Therapy

A QUICK REFERENCE

Adjuvant indications

Herceptin is indicated for adjuvant treatment of HER2-overexpressing node-positive or node-negative (ER/PR-negative or with one high-risk feature*) breast cancer:

- ▶ As part of a treatment regimen containing doxorubicin, cyclophosphamide, and either paclitaxel or docetaxel
- ▶ With docetaxel and carboplatin
- ▶ As a single agent following multi-modality anthracycline-based therapy

*High-risk is defined as ER/PR positive with one of the following features: tumor size >2 cm, age <35 years, or tumor grade 2 or 3.

Boxed WARNINGS

- ▶ **Herceptin administration can result in sub-clinical and clinical cardiac failure. The incidence and severity was highest in patients receiving Herceptin with anthracycline-containing chemotherapy regimens. In a pivotal adjuvant trial, one patient who developed CHF died of cardiomyopathy**
- ▶ **Evaluate cardiac function prior to and during treatment. For adjuvant breast cancer therapy, also evaluate cardiac function after completion of Herceptin. Discontinue Herceptin for cardiomyopathy**
- ▶ **Herceptin can result in serious and fatal infusion reactions and pulmonary toxicity. Discontinue Herceptin for anaphylaxis, angioedema, interstitial pneumonitis, or acute respiratory distress syndrome**
- ▶ **Exposure to Herceptin during pregnancy can result in oligohydramnios and oligohydramnios sequence manifesting as pulmonary hypoplasia, skeletal abnormalities, and neonatal death**

Please see pages 12-13 and accompanying full Prescribing Information for **Boxed WARNINGS** and additional important safety information.

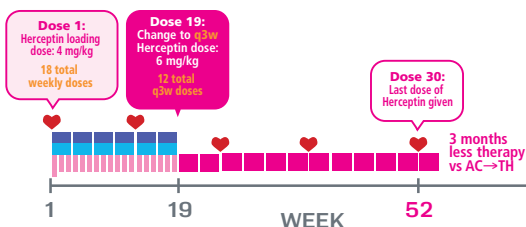


Based on the adjuvant clinical trials, Herceptin is indicated for 1 full year¹

TCH

[Taxotere® (docetaxel) + carboplatin + Herceptin]

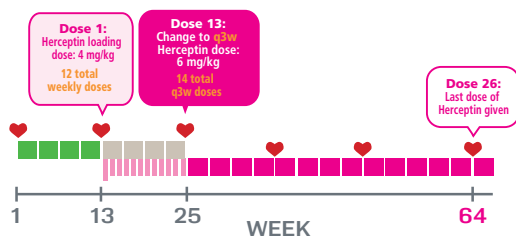
12-month total course of IV therapy



AC→TH

(doxorubicin + cyclophosphamide → taxane + Herceptin)

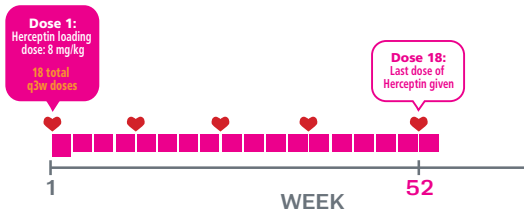
15-month total course of IV therapy



H

[Herceptin monotherapy]

Up to an 18-month total course of IV therapy, depending on prior adjuvant chemotherapy received



- Herceptin weekly
 - Herceptin q3w
 - Taxotere q3w
 - Carboplatin q3w
 - AC: anthracycline (doxorubicin) + cyclophosphamide q3w
 - Taxane (either Taxotere or paclitaxel) q3w
 - Week of cardiac assessment*
- *LVEF measurements every 6 months for at least 2 years following completion of Herceptin as a component of adjuvant therapy.

Taxotere is a registered trademark of sanofi-aventis U.S. LLC.

Herceptin dosing¹

	Dosage	Infusion time
Loading dose ▶ For TCH regimen: week 1 ▶ For AC→TH regimen: week 13 of total regimen	4 mg/kg	90 minutes
▶ For monotherapy regimen after completion of all chemotherapy: week 1	8 mg/kg	90 minutes
Subsequent doses during weekly administration ▶ For TCH regimen: from week 2 through week 18 ▶ For AC→TH regimen: from week 14 through week 24 of total regimen	2 mg/kg	30 minutes
Subsequent doses during q3w administration ▶ For TCH regimen: from week 19 through end of Herceptin therapy ▶ For AC→TH regimen: from week 25 through week 64 of total regimen ▶ For monotherapy regimen after completion of all chemotherapy: from week 4 through end of Herceptin therapy	6 mg/kg	30-90 minutes

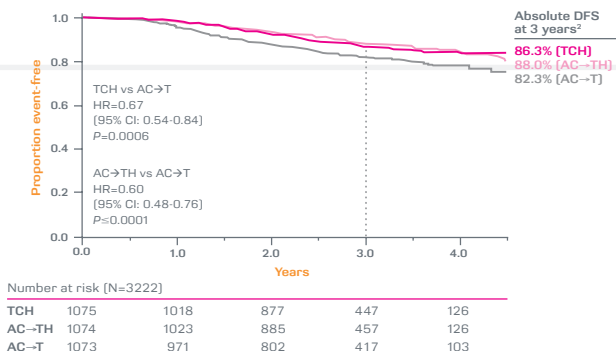
- ▶ A complete course of Herceptin should result in a total dose of 110 mg/kg of Herceptin, regardless of the dosing regimen used¹
- ▶ In the adjuvant clinical trials, Herceptin was given concurrently with hormonal and/or radiation therapy [after completion of chemotherapy cycles] to eligible patients¹

Important Safety Information

- ▶ Exacerbation of chemotherapy-induced neutropenia has also occurred
- ▶ Detection of HER2 protein overexpression is necessary for selection of patients appropriate for Herceptin therapy
- ▶ The most common adverse reactions (≥5%) associated with Herceptin in the adjuvant breast cancer setting were headache, diarrhea, nausea, and chills

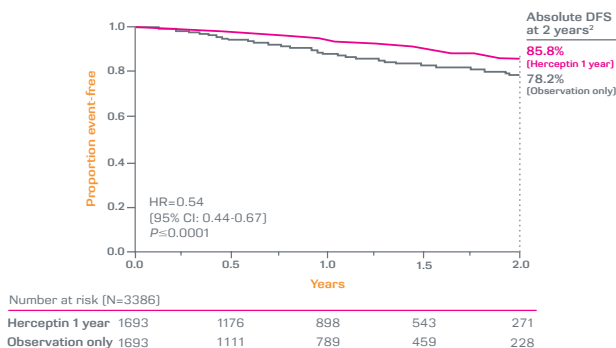
Please see pages 12-13 and accompanying full Prescribing Information for **Boxed WARNINGS** and additional important safety information.

BCIRG 006 demonstrated that 1 year of Herceptin improved disease-free survival (DFS) with either TCH or AC→TH regimens¹



- ▶ At 3 years, absolute risk of disease recurrence was decreased by:
 - 4.0% in the TCH arm compared with AC→T [95% CI: 0.6%-7.4%]²
 - 5.7% in the AC→TH arm compared with AC→T [95% CI: 2.4%-9.0%]²

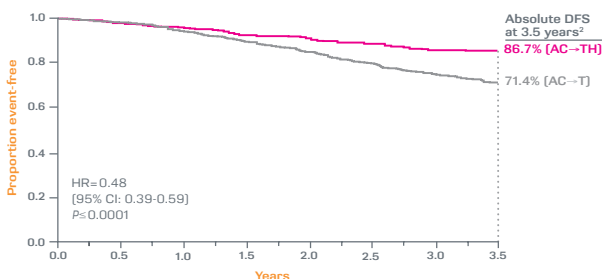
HERA supported the DFS benefit provided by 1 year of Herceptin¹



- ▶ At 2 years, absolute risk of disease recurrence was decreased by 7.6% in the 1-year Herceptin arm of the study compared with the observation arm²
- ▶ The risk of distant disease recurrence* was reduced by more than half [HR=0.49; 95% CI: 0.38-0.63; P<0.0001]³

*Distant disease recurrence was defined as time from randomization to the development of tumor in any nonlocal/nonregional site.

Joint Analysis showed that 1 year of Herceptin significantly improved DFS¹



Number at risk (N=3752)

AC→TH	1872	1529	1240	997	764	575	426	239
AC→T	1880	1490	1159	926	689	534	375	195

- ▶ At 3.5 years, absolute risk of disease recurrence was decreased by 15.3% in the Herceptin-containing regimen compared with AC→T [95% CI: 11.9%-18.6%]²

Boxed WARNINGS

- ▶ Herceptin administration can result in sub-clinical and clinical cardiac failure. The incidence and severity was highest in patients receiving Herceptin with anthracycline-containing chemotherapy regimens. In a pivotal adjuvant trial, one patient who developed CHF died of cardiomyopathy
- ▶ Evaluate cardiac function prior to and during treatment. For adjuvant breast cancer therapy, also evaluate cardiac function after completion of Herceptin. Discontinue Herceptin for cardiomyopathy
- ▶ Herceptin can result in serious and fatal infusion reactions and pulmonary toxicity. Discontinue Herceptin for anaphylaxis, angioedema, interstitial pneumonitis, or acute respiratory distress syndrome
- ▶ Exposure to Herceptin during pregnancy can result in oligohydramnios and oligohydramnios sequence manifesting as pulmonary hypoplasia, skeletal abnormalities, and neonatal death

Please see pages 12-13 and accompanying full Prescribing Information for **Boxed WARNINGS** and additional important safety information.

Cardiac concerns associated with Herceptin therapy¹

Incidence of CHF in adjuvant HER2+ breast cancer studies¹

Study	Incidence of CHF	
	Herceptin arm	Control arm
BCIRG 006	AC→TH (n=1068) 2%	AC→T (n=1050) 0.3%
	TCH (n=1056) 0.4%	
HERA	Herceptin 1 year (n=1678) 2%	Observation only (n=1708) 0.3%
Joint Analysis*	AC→TH (n=1677) 2%	AC→T (n=1600) 0.4%

*Includes 1 patient with fatal cardiomyopathy.

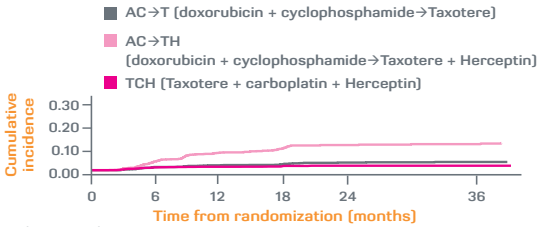
Boxed WARNING: Cardiomyopathy

- ▶ Herceptin administration can result in sub-clinical and clinical cardiac failure. The incidence and severity was highest in patients receiving Herceptin with anthracycline-containing chemotherapy regimens. In a pivotal adjuvant trial, one patient who developed CHF died of cardiomyopathy
- ▶ Discontinue Herceptin treatment in patients receiving adjuvant therapy and withhold Herceptin in patients with metastatic disease for clinically significant decrease in left ventricular function

Incidence of LVEF decline observed across adjuvant trials¹

First LVEF decline of ≥ 10 percentage points from baseline and to $< 50\%$ in pivotal Herceptin trials^{1†}

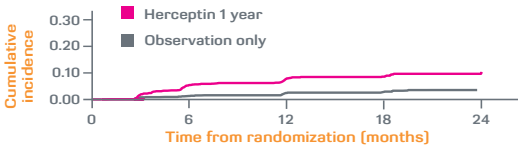
BCIRG 006



Number at Risk

AC→T	1050	947	836	523	359	259
AC→TH	1068	975	839	474	315	248
TCH	1056	975	877	535	350	271

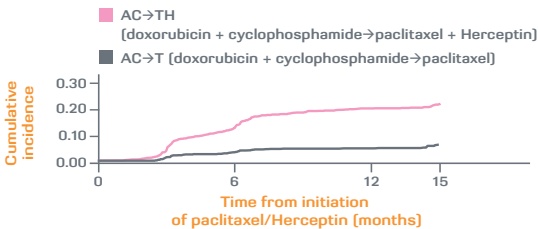
HERA



Number at Risk

Herceptin 1 year	1678	1142	873	538	263
Observation only	1708	1154	831	498	245

Joint Analysis



Number at Risk

AC→TH	1606	1130	809	367
AC→T	1488	1113	819	528

[†]With death as a competing risk event.

Please see pages 12-13 and accompanying full Prescribing Information for **Boxed WARNINGS** and additional important safety information.

7

Herceptin was associated with lower cardiac-related discontinuation rates when used in a non-anthracycline-containing regimen¹

Discontinuation of treatment with Herceptin due to cardiac-related events¹

Study	Herceptin arm	Discontinuation rate
BCIRG 006	AC→TH (n=1068)	5.7%
	TCH (n=1056)	2.9%
HERA	Herceptin 1 year (n=1678)	2.6%
Joint Analysis*	AC→TH (n=844)	16%

*Data from the NSABP B-31 trial only.

Discontinuation rates in BCIRG 006 by Herceptin phase¹

Study arm	Herceptin phase	Discontinuation rate
AC→TH (n=1068)	With chemotherapy	1.5%
	Monotherapy	4.2%
TCH (n=1056)	With chemotherapy	1.5%
	Monotherapy	1.4%

Boxed WARNING: Embryo-Fetal Toxicity

- ▶ Exposure to Herceptin during pregnancy can result in oligohydramnios and oligohydramnios sequence manifesting as pulmonary hypoplasia, skeletal abnormalities, and neonatal death
- ▶ Advise women of the potential hazard to the fetus resulting from Herceptin exposure during pregnancy and provide counseling to women of childbearing potential to use effective contraceptive methods during treatment and for a minimum of six months following Herceptin
- ▶ Advise nursing mothers treated with Herceptin to discontinue nursing or discontinue Herceptin, taking into account the importance of the drug to the mother
- ▶ Encourage women who are exposed to Herceptin during pregnancy to enroll in MoTHER—the Herceptin Pregnancy Registry

Please see pages 12-13 and accompanying full Prescribing Information for **Boxed WARNINGS** and additional important safety information.

Careful cardiac monitoring may identify when Herceptin treatment modification is necessary¹

Frequent cardiac monitoring is recommended for patients receiving Herceptin¹



*In the Joint Analysis, baseline measurement was conducted prior to initiation of AC therapy.

¹Repeat LVEF measurements at 4-week intervals if Herceptin is withheld for significant left ventricular cardiac dysfunction.

- ▶ Conduct a thorough cardiac assessment prior to Herceptin treatment, including history, physical examination, and determination of LVEF by echocardiogram or MUGA scan¹
- ▶ Monitor LVEF frequently during and after Herceptin treatment. Monitor more frequently if Herceptin is withheld for significant left ventricular cardiac dysfunction¹

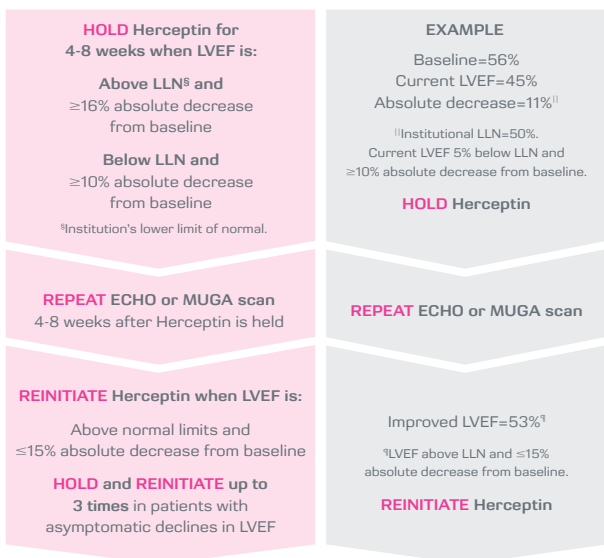
In patients who received Herceptin, certain risk factors were found to be significantly associated with CHF in the Joint Analysis⁴

Potential factors affecting the risk of CHF[‡] in Joint Analysis <i>[trial NSABP B-31]</i>	Potential factors not affecting the risk of CHF[‡] in Joint Analysis <i>[trial NSABP B-31]</i>
<ul style="list-style-type: none"> ▶ Declining LVEF after completion of AC chemotherapy ▶ Increasing age ▶ Treatment with Herceptin: <ul style="list-style-type: none"> • As a single agent • Added to standard chemotherapy 	<ul style="list-style-type: none"> ▶ Diabetes medication ▶ Lipid medications ▶ Family history of cardiac disease ▶ History of smoking ▶ Left-sided radiation

[‡]Defined as New York Heart Association Class III or possible/probable cardiac death.

Hold, reinitiation, and discontinuation criteria for patients receiving Herceptin¹

Herceptin hold and reinitiation criteria¹



The safety of continuation or resumption of Herceptin in patients with Herceptin-induced left ventricular cardiac dysfunction has not been studied.¹

Discontinue Herceptin permanently if any of the following occurs¹:

- ▶ Patient presents with CHF
- ▶ Clinically significant asymptomatic decreases in left ventricular function
- ▶ Persistent (>8 weeks) LVEF decline is observed
- ▶ Herceptin dosing is held on more than 3 occasions for cardiomyopathy

Please see pages 12-13 and accompanying full Prescribing Information for **Boxed WARNINGS** and additional important safety information.

Boxed WARNINGS and Additional Important Safety Information

Cardiomyopathy and Cardiac Monitoring

- ▶ Herceptin administration can result in sub-clinical and clinical cardiac failure. The incidence and severity was highest in patients receiving Herceptin with anthracycline-containing chemotherapy regimens. In a pivotal adjuvant trial, one patient who developed CHF died of cardiomyopathy
- ▶ Discontinue Herceptin treatment in patients receiving adjuvant therapy and withhold Herceptin in patients with metastatic disease for clinically significant decrease in left ventricular function
- ▶ Evaluate cardiac function prior to and during treatment. For adjuvant therapy, also evaluate cardiac function after completion of Herceptin
- ▶ Monitor frequently for decreased left ventricular function during and after Herceptin treatment. Monitor more frequently if Herceptin is withheld for significant left ventricular cardiac dysfunction

Infusion Reactions and Pulmonary Toxicity

- ▶ Herceptin administration can result in serious and fatal infusion reactions and pulmonary toxicity
- ▶ Symptoms usually occur during or within 24 hours of Herceptin administration
- ▶ Interrupt Herceptin infusion for dyspnea or clinically significant hypotension
- ▶ Monitor patients until symptoms completely resolve
- ▶ Discontinue Herceptin for anaphylaxis, angioedema, interstitial pneumonitis, or acute respiratory distress syndrome

Boxed WARNINGS and Additional Important Safety Information (cont'd)

Embryo-Fetal Toxicity

- ▶ **Exposure to Herceptin during pregnancy can result in oligohydramnios and oligohydramnios sequence manifesting as pulmonary hypoplasia, skeletal abnormalities, and neonatal death**
- ▶ Advise women of the potential hazard to the fetus resulting from Herceptin exposure during pregnancy and provide contraception counseling to women of childbearing potential

Exacerbation of Chemotherapy-Induced Neutropenia

- ▶ In randomized, controlled clinical trials, the per-patient incidences of NCI CTC Grade 3-4 neutropenia and of febrile neutropenia were higher in patients receiving Herceptin in combination with myelosuppressive chemotherapy as compared to those who received chemotherapy alone

HER2 Testing

- ▶ Detection of HER2 protein overexpression is necessary for selection of patients appropriate for Herceptin therapy because these are the only patients studied and for whom benefit has been shown

Most Common Adverse Reactions

- ▶ The most common adverse reactions associated with Herceptin use were fever, nausea, vomiting, infusion reactions, diarrhea, infections, increased cough, headache, fatigue, dyspnea, rash, neutropenia, anemia, and myalgia

Please see accompanying full Prescribing Information for **Boxed WARNINGS** and additional important safety information.

Exclusion from Herceptin adjuvant clinical trials based on certain cardiac criteria¹

Cardiac exclusion criteria in trials¹

BCIRG 006

- ▶ History of CHF
- ▶ Grade 3 or 4 cardiac arrhythmia
- ▶ Angina requiring medication
- ▶ Clinically significant valvular heart disease
- ▶ Myocardial infarction
- ▶ Poorly controlled hypertension
 - Diastolic >100 mm Hg

HERA

- ▶ History of CHF or LVEF <55%
- ▶ Uncontrolled arrhythmias
- ▶ Angina requiring medication
- ▶ Clinically significant valvular heart disease
- ▶ Evidence of transmural infarction on ECG
- ▶ Poorly controlled hypertension
 - Diastolic >100 mm Hg
or systolic >180 mm Hg

Joint Analysis

- ▶ History of active cardiac disease based on:
 - Symptoms
 - Abnormal ECG findings
 - Abnormal radiologic findings
 - Abnormal LVEF findings
 - Uncontrolled hypertension
 - Diastolic >100 mm Hg
or systolic >200 mm Hg

References: 1. Herceptin Prescribing Information. Genentech, Inc. October 29, 2010. 2. Data on file. Genentech, Inc. 3. Piccart-Gebhart MJ, Procter M, Leyland-Jones B, et al; for the Herceptin Adjuvant (HERA) Trial Study Team. Trastuzumab after adjuvant chemotherapy in HER2-positive breast cancer. *N Engl J Med.* 2005;353:1659-1672. 4. Tan-Chiu E, Yothers G, Romond E, et al. Assessment of cardiac dysfunction in a randomized trial comparing doxorubicin and cyclophosphamide followed by paclitaxel, with or without trastuzumab as adjuvant therapy in node-positive, human epidermal growth factor receptor 2-overexpressing breast cancer: NSABP B-31. *J Clin Oncol.* 2005;23:7811-7819.

Please see pages 12-13 and accompanying full Prescribing Information for **Boxed WARNINGS** and additional important safety information.

Genentech
A Member of the Roche Group

©2011 Genentech USA, Inc.
HER0000200601

 **Herceptin**[®]
trastuzumab

So. San Francisco, CA

All rights reserved.

2/11

1.14.1.3 Final Labeling Text

HIGHLIGHTS OF PRESCRIBING INFORMATION

These highlights do not include all the information needed to use Herceptin safely and effectively. See full prescribing information for Herceptin.

HERCEPTIN® (trastuzumab)

Intravenous Infusion

Initial U.S. Approval: 1998

WARNING: CARDIOMYOPATHY, INFUSION REACTIONS, EMBRYO-FETAL TOXICITY, and PULMONARY TOXICITY

See full prescribing information for complete boxed warning

Cardiomyopathy: Herceptin can result in sub-clinical and clinical cardiac failure manifesting as CHF, and decreased LVEF, with greatest risk when administered concurrently with anthracyclines. Evaluate cardiac function prior to and during treatment. Discontinue Herceptin for cardiomyopathy. (5.1, 2.2)

Infusion reactions, Pulmonary toxicity: Discontinue Herceptin for anaphylaxis, angioedema, interstitial pneumonitis, or acute respiratory distress syndrome. (5.2, 5.4)

Embryo-Fetal Toxicity: Exposure to Herceptin during pregnancy can result in oligohydramnios, in some cases complicated by pulmonary hypoplasia and neonatal death.

RECENT MAJOR CHANGES

Indications and Usage, Metastatic Gastric Cancer (1.3)	10/2010
Dosage and Administration (2.1)	10/2010
Warnings and Precautions, Embryo-Fetal Toxicity (5.3)	10/2010
Warnings and Precautions, HER2 Testing (5.6)	10/2010

INDICATIONS AND USAGE

Herceptin is a HER2/neu receptor antagonist indicated for:

- the treatment of HER2 overexpressing breast cancer (1.1, 1.2).
- the treatment of HER2-overexpressing metastatic gastric or gastroesophageal junction adenocarcinoma (1.3)

DOSAGE AND ADMINISTRATION

For intravenous (IV) infusion only. Do not administer as an IV push or bolus (5.2).

Adjuvant Treatment of HER2-Overexpressing Breast Cancer (2.1)

Administer at either:

- Initial dose of 4 mg/kg over 90 minute IV infusion, then 2 mg/kg over 30 minute IV infusion weekly for 52 weeks, or

- Initial dose of 8 mg/kg over 90 minutes IV infusion, then 6 mg/kg over 30–90 minutes IV infusion every three weeks for 52 weeks.

Metastatic HER2-Overexpressing Breast Cancer (2.1)

- Initial dose of 4 mg/kg as a 90 minute IV infusion followed by subsequent weekly doses of 2 mg/kg as 30 minute IV infusions.

Metastatic HER2-overexpressing Gastric Cancer (2.1)

- Initial dose of 8 mg/kg over 90 minutes IV infusion, followed by 6 mg/kg over 30 to 90 minutes IV infusion every 3 weeks.

DOSAGE FORMS AND STRENGTHS

- Multidose vial nominally containing 440 mg Herceptin as a lyophilized, sterile powder. (3)

CONTRAINDICATIONS

- None. (4)

WARNINGS AND PRECAUTIONS

- Cardiomyopathy (5.1, 6.1)
- Infusion Reactions (5.2, 6.1)
- Embryo-fetal Toxicity. Pregnancy registry available (1-800-690-6720) (5.3, 8.1)
- Pulmonary Toxicity (5.4, 6.1)
- Exacerbation of Chemotherapy-Induced Neutropenia (5.5, 6.1)
- HER2 testing should be performed using FDA-approved tests by laboratories with demonstrated proficiency. (5.6)

ADVERSE REACTIONS

Adjuvant Breast Cancer

- Most common adverse reactions (≥5%) are headache, diarrhea, nausea, and chills. (6.1)

Metastatic Breast Cancer

- Most common adverse reactions (≥ 10%) are fever, chills, headache, infection, congestive heart failure, insomnia, cough, and rash. (6.1)

Metastatic Gastric Cancer

- Most common adverse reactions (≥ 10%) are neutropenia, diarrhea, fatigue, anemia, stomatitis, weight loss, upper respiratory tract infections, fever, thrombocytopenia, mucosal inflammation, nasopharyngitis, and dysgeusia. (6.1)

USE IN SPECIFIC POPULATIONS

Nursing Mothers: Discontinue nursing or discontinue Herceptin. (8.3)

To report SUSPECTED ADVERSE REACTIONS, contact Genentech at 1-888-835-2555 or FDA at 1-800-FDA-1088 or www.fda.gov/medwatch.

See 17 for PATIENT COUNSELING INFORMATION.

Revised: 10/2010

FULL PRESCRIBING INFORMATION: CONTENTS*

WARNING – CARDIOMYOPATHY, INFUSION REACTIONS, EMBRYO-FETAL TOXICITY, PULMONARY TOXICITY

1 INDICATIONS AND USAGE

- Adjuvant Breast Cancer
- Metastatic Breast Cancer
- Metastatic Gastric Cancer

2 DOSAGE AND ADMINISTRATION

- Recommended Doses and Schedules
- Dose Modifications
- Preparation for Administration

3 DOSAGE FORMS AND STRENGTHS

4 CONTRAINDICATIONS

5 WARNINGS AND PRECAUTIONS

- Cardiomyopathy
- Infusion Reactions
- Embryo-Fetal Toxicity
- Pulmonary Toxicity
- Exacerbation of Chemotherapy-Induced Neutropenia
- HER2 Testing

6 ADVERSE REACTIONS

- Clinical Trials Experience
- Immunogenicity
- Post-Marketing Experience

7 DRUG INTERACTIONS

8 USE IN SPECIFIC POPULATIONS

- Pregnancy

8.3 Nursing Mothers

8.4 Pediatric Use

8.5 Geriatric Use

10 OVERDOSAGE

11 DESCRIPTION

12 CLINICAL PHARMACOLOGY

12.1 Mechanism of Action

12.2 Pharmacokinetics

13 NONCLINICAL TOXICOLOGY

13.1 Carcinogenesis, Mutagenesis, Impairment of Fertility

13.2 Animal Toxicology and/or Pharmacology

14 CLINICAL STUDIES

14.1 Adjuvant Breast Cancer

14.2 Metastatic Breast Cancer

14.3 Metastatic Gastric Cancer

16 HOW SUPPLIED/STORAGE AND HANDLING

16.1 How Supplied

16.2 Stability and Storage

17 PATIENT COUNSELING INFORMATION

* Sections or subsections omitted from the Full Prescribing Information are not listed.

FULL PRESCRIBING INFORMATION

WARNING: CARDIOMYOPATHY, INFUSION REACTIONS, EMBRYO-FETAL TOXICITY, and PULMONARY TOXICITY

Cardiomyopathy

Herceptin administration can result in sub clinical and clinical cardiac failure. The incidence and severity was highest in patients receiving Herceptin with anthracycline containing chemotherapy regimens.

Evaluate left ventricular function in all patients prior to and during treatment with Herceptin. Discontinue Herceptin treatment in patients receiving adjuvant therapy and withhold Herceptin in patients with metastatic disease for clinically significant decrease in left ventricular function. *[see Warnings and Precautions (5.1) and Dosage and Administration (2.2)]*

Infusion Reactions; Pulmonary Toxicity

Herceptin administration can result in serious and fatal infusion reactions and pulmonary toxicity. Symptoms usually occur during or within 24 hours of Herceptin administration. Interrupt Herceptin infusion for dyspnea or clinically significant hypotension. Monitor patients until symptoms completely resolve. Discontinue Herceptin for anaphylaxis, angioedema, interstitial pneumonitis, or acute respiratory distress syndrome. *[see Warnings and Precautions (5.2, 5.4)]*

Embryo-Fetal Toxicity

Exposure to Herceptin during pregnancy can result in oligohydramnios and oligohydramnios sequence manifesting as pulmonary hypoplasia, skeletal abnormalities, and neonatal death. *[see Warnings and Precautions (5.3), Use in Specific Populations (8.1)]*

1 INDICATIONS AND USAGE

1.1 Adjuvant Breast Cancer

Herceptin is indicated for adjuvant treatment of HER2 overexpressing node positive or node negative (ER/PR negative or with one high risk feature *[see Clinical Studies (14.1)]*) breast cancer

- as part of a treatment regimen consisting of doxorubicin, cyclophosphamide, and either paclitaxel or docetaxel
- with docetaxel and carboplatin
- as a single agent following multi-modality anthracycline based therapy.

1.2 Metastatic Breast Cancer

Herceptin is indicated:

- In combination with paclitaxel for first-line treatment of HER2-overexpressing metastatic breast cancer
- As a single agent for treatment of HER2-overexpressing breast cancer in patients who have received one or more chemotherapy regimens for metastatic disease.

1.3 Metastatic Gastric Cancer

Herceptin is indicated, in combination with cisplatin and capecitabine or 5-fluorouracil, for the treatment of patients with HER2 overexpressing metastatic gastric or gastroesophageal junction adenocarcinoma, who have not received prior treatment for metastatic disease.

2 DOSAGE AND ADMINISTRATION

2.1 Recommended Doses and Schedules

Do not administer as an intravenous push or bolus. Do not mix Herceptin with other drugs.

Adjuvant Treatment, Breast Cancer:

Administer according to one of the following doses and schedules for a total of 52 weeks of Herceptin therapy:

During and following paclitaxel, docetaxel, or docetaxel/carboplatin:

- Initial dose of 4 mg/kg as an intravenous infusion over 90 minutes then at 2 mg/kg as an intravenous infusion over 30 minutes weekly during chemotherapy for the first 12 weeks (paclitaxel or docetaxel) or 18 weeks (docetaxel/carboplatin).
- One week following the last weekly dose of Herceptin, administer Herceptin at 6 mg/kg as an intravenous infusion over 30–90 minutes every three weeks.

As a single agent within three weeks following completion of multi-modality, anthracycline-based chemotherapy regimens:

- Initial dose at 8 mg/kg as an intravenous infusion over 90 minutes
- Subsequent doses at 6 mg/kg as an intravenous infusion over 30–90 minutes every three weeks.

[see *Dose Modifications (2.2)*]

Metastatic Treatment, Breast Cancer:

- Administer Herceptin, alone or in combination with paclitaxel, at an initial dose of 4 mg/kg as a 90 minute intravenous infusion followed by subsequent once weekly doses of 2 mg/kg as 30 minute intravenous infusions until disease progression.

Metastatic Gastric Cancer

- Administer Herceptin at an initial dose of 8 mg/kg as a 90 minute intravenous infusion followed by subsequent doses of 6 mg/kg as an intravenous infusion over 30-90 minutes every three weeks until disease progression [see *Dose Modifications (2.2)*].

2.2 Dose Modifications

Infusion Reactions

[see *Boxed Warning, Warnings and Precautions (5.2)*]

- Decrease the rate of infusion for mild or moderate infusion reactions
- Interrupt the infusion in patients with dyspnea or clinically significant hypotension
- Discontinue Herceptin for severe or life-threatening infusion reactions.

Cardiomyopathy

[see *Boxed Warning, Warnings and Precautions (5.1)*]

Assess left ventricular ejection fraction (LVEF) prior to initiation of Herceptin and at regular intervals during treatment. Withhold Herceptin dosing for at least 4 weeks for either of the following:

- $\geq 16\%$ absolute decrease in LVEF from pre-treatment values
- LVEF below institutional limits of normal and $\geq 10\%$ absolute decrease in LVEF from pretreatment values.

Herceptin may be resumed if, within 4–8 weeks, the LVEF returns to normal limits and the absolute decrease from baseline is $\leq 15\%$.

Permanently discontinue Herceptin for a persistent (> 8 weeks) LVEF decline or for suspension of Herceptin dosing on more than 3 occasions for cardiomyopathy.

2.3 Preparation for Administration

Reconstitution

Reconstitute each 440 mg vial of Herceptin with 20 mL of Bacteriostatic Water for Injection (BWFI), USP, containing 1.1% benzyl alcohol as a preservative to yield a multi-dose solution containing 21 mg/mL trastuzumab. In patients with known hypersensitivity to benzyl alcohol, reconstitute with 20 mL of Sterile Water for Injection (SWFI) without preservative to yield a single use solution.

Use appropriate aseptic technique when performing the following reconstitution steps:

- Using a sterile syringe, slowly inject the 20 mL of diluent into the vial containing the lyophilized cake of Herceptin. The stream of diluent should be directed into the lyophilized cake.
- Swirl the vial gently to aid reconstitution. **DO NOT SHAKE.**
- Slight foaming of the product may be present upon reconstitution. Allow the vial to stand undisturbed for approximately 5 minutes.
- Parenteral drug products should be inspected visually for particulate matter and discoloration prior to administration, whenever solution and container permit. Inspect visually for particulates and discoloration. The solution should be free of visible particulates, clear to slightly opalescent and colorless to pale yellow.
- Store reconstituted Herceptin at 2–8°C; discard unused Herceptin after 28 days. If Herceptin is reconstituted with SWFI without preservative, use immediately and discard any unused portion.

Dilution

- Determine the dose (mg) of Herceptin [*see Dosage and Administration (2.1)*]. Calculate the volume of the 21 mg/mL reconstituted Herceptin solution needed, withdraw this amount from the vial and add it to an infusion bag containing 250 mL of 0.9% Sodium Chloride Injection, USP. **DO NOT USE DEXTROSE (5%) SOLUTION.**
- Gently invert the bag to mix the solution.

3 DOSAGE FORMS AND STRENGTHS

440 mg lyophilized powder per multi-use vial.

4 CONTRAINDICATIONS

None.

5 WARNINGS AND PRECAUTIONS

5.1 Cardiomyopathy

Herceptin can cause left ventricular cardiac dysfunction, arrhythmias, hypertension, disabling cardiac failure, cardiomyopathy, and cardiac death [*see Boxed Warning: [Cardiomyopathy](#)*]. Herceptin can also cause asymptomatic decline in left ventricular ejection fraction (LVEF).

There is a 4–6 fold increase in the incidence of symptomatic myocardial dysfunction among patients receiving Herceptin as a single agent or in combination therapy compared with those not receiving Herceptin. The highest absolute incidence occurs when Herceptin is administered with an anthracycline.

Withhold Herceptin for $\geq 16\%$ absolute decrease in LVEF from pre-treatment values or an LVEF value below institutional limits of normal and $\geq 10\%$ absolute decrease in LVEF from pretreatment values [*see Dosage and Administration (2.2)*]. The safety of continuation or resumption of Herceptin in patients with Herceptin-induced left ventricular cardiac dysfunction has not been studied.

Cardiac Monitoring

Conduct thorough cardiac assessment, including history, physical examination, and determination of LVEF by echocardiogram or MUGA scan. The following schedule is recommended:

- Baseline LVEF measurement immediately prior to initiation of Herceptin
- LVEF measurements every 3 months during and upon completion of Herceptin

- Repeat LVEF measurement at 4 week intervals if Herceptin is withheld for significant left ventricular cardiac dysfunction [*see Dosage and Administration (2.2)*]
- LVEF measurements every 6 months for at least 2 years following completion of Herceptin as a component of adjuvant therapy.

In Study 1, 16% (136/844) of patients discontinued Herceptin due to clinical evidence of myocardial dysfunction or significant decline in LVEF. In Study 3, the number of patients who discontinued Herceptin due to cardiac toxicity was 2.6% (44/1678). In Study 4, a total of 2.9% (31/1056) patients in the TCH arm (1.5% during the chemotherapy phase and 1.4% during the monotherapy phase) and 5.7% (61/1068) patients in the AC-TH arm (1.5% during the chemotherapy phase and 4.2% during the monotherapy phase) discontinued Herceptin due to cardiac toxicity.

Among 32 patients receiving adjuvant chemotherapy (Studies 1 and 2) who developed congestive heart failure, one patient died of cardiomyopathy and all other patients were receiving cardiac medication at last follow-up. Approximately half of the surviving patients had recovery to a normal LVEF (defined as $\geq 50\%$) on continuing medical management at the time of last follow-up. Incidence of congestive heart failure is presented in Table 1. The safety of continuation or resumption of Herceptin in patients with Herceptin-induced left ventricular cardiac dysfunction has not been studied.

Table 1
Incidence of Congestive Heart Failure in Adjuvant Breast Cancer Studies

Study	Regimen	Incidence of CHF	
		Herceptin	Control
1 & 2 ^a	AC ^b →Paclitaxel+Herceptin	2% (32/1677)	0.4% (7/1600)
3	Chemo → Herceptin	2% (30/1678)	0.3% (5/1708)
4	AC ^b →Docetaxel+Herceptin	2% (20/1068)	0.3% (3/1050)
4	Docetaxel+Carbo+Herceptin	0.4% (4/1056)	0.3% (3/1050)

^a Includes 1 patient with fatal cardiomyopathy.

^b Anthracycline (doxorubicin) and cyclophosphamide

Table 2
Incidence of Cardiac Dysfunction^a in Metastatic Breast Cancer Studies

Study	Event	Incidence			
		NYHA I–IV		NYHA III–IV	
		Herceptin	Control	Herceptin	Control
5 (AC) ^b	Cardiac Dysfunction	28%	7%	19%	3%
5 (paclitaxel)	Cardiac Dysfunction	11%	1%	4%	1%
6	Cardiac Dysfunction ^c	7%	N/A	5%	N/A

^a Congestive heart failure or significant asymptomatic decrease in LVEF.

^b Anthracycline (doxorubicin or epirubicin) and cyclophosphamide.

^c Includes 1 patient with fatal cardiomyopathy.

In Study 4, the incidence of NCI-CTC Grade 3/4 cardiac ischemia/infarction was higher in the Herceptin containing regimens: (AC-TH: 0.3% (3/1068) and TCH 0.2% (2/1056)) as compared to none in AC-T.

5.2 Infusion Reactions

Infusion reactions consist of a symptom complex characterized by fever and chills, and on occasion included nausea, vomiting, pain (in some cases at tumor sites), headache, dizziness, dyspnea, hypotension, rash, and asthenia. [see *Adverse Reactions (6.1)*]

In postmarketing reports, serious and fatal infusion reactions have been reported. Severe reactions which include bronchospasm, anaphylaxis, angioedema, hypoxia, and severe hypotension, were usually reported during or immediately following the initial infusion. However, the onset and clinical course were variable including progressive worsening, initial improvement followed by clinical deterioration, or delayed post-infusion events with rapid clinical deterioration. For fatal events, death occurred within hours to days following a serious infusion reaction.

Interrupt Herceptin infusion in all patients experiencing dyspnea, clinically significant hypotension, and intervention of medical therapy administered, which may include: epinephrine, corticosteroids, diphenhydramine, bronchodilators, and oxygen. Patients should be evaluated and carefully monitored until complete resolution of signs and symptoms. Permanent discontinuation should be strongly considered in all patients with severe infusion reactions.

There are no data regarding the most appropriate method of identification of patients who may safely be retreated with Herceptin after experiencing a severe infusion reaction. Prior to resumption of Herceptin infusion, the majority of patients who experienced a severe infusion reaction were pre-medicated with antihistamines and/or corticosteroids. While some patients tolerated Herceptin infusions, others had recurrent severe infusion reactions despite pre-medications.

5.3 Embryo-Fetal Toxicity

Herceptin can cause fetal harm when administered to a pregnant woman. In post-marketing reports, use of Herceptin during pregnancy resulted in cases of oligohydramnios and oligohydramnios sequence manifesting as pulmonary hypoplasia, skeletal abnormalities, and neonatal death. Advise women of the potential hazard to the fetus resulting from Herceptin exposure during pregnancy and provide contraception counseling to women of childbearing potential. [see *Use in Specific Populations (8.1)*, *Patient Counseling Information (17)*].

5.4 Pulmonary Toxicity

Herceptin use can result in serious and fatal pulmonary toxicity. Pulmonary toxicity includes dyspnea, interstitial pneumonitis, pulmonary infiltrates, pleural effusions, non-cardiogenic pulmonary edema, pulmonary insufficiency and hypoxia, acute respiratory distress syndrome, and pulmonary fibrosis. Such events can occur as sequelae of infusion reactions [see *Warnings and Precautions (5.2)*]. Patients with symptomatic intrinsic lung disease or with extensive tumor involvement of the lungs, resulting in dyspnea at rest, appear to have more severe toxicity.

5.5 Exacerbation of Chemotherapy-Induced Neutropenia

In randomized, controlled clinical trials the per-patient incidences of NCI CTC Grade 3–4 neutropenia and of febrile neutropenia were higher in patients receiving Herceptin in combination with myelosuppressive chemotherapy as compared to those who received chemotherapy alone. The incidence of septic death was similar among patients who received Herceptin and those who did not. [see *Adverse Reactions (6.1)*]

5.6 HER2 Testing

Detection of HER2 protein overexpression is necessary for selection of patients appropriate for Herceptin therapy because these are the only patients studied and for whom benefit has been shown. Due to differences in tumor histopathology, use FDA-approved tests for the specific tumor type (breast or gastric/gastroesophageal adenocarcinoma) to assess HER2 protein overexpression and HER2 gene amplification. Tests should be performed by laboratories with demonstrated proficiency in the specific technology being utilized. Improper assay performance, including use of suboptimally fixed tissue, failure to utilize specified reagents, deviation from specific assay

instructions, and failure to include appropriate controls for assay validation, can lead to unreliable results.

Several FDA-approved commercial assays are available to aid in the selection of breast cancer and metastatic gastric cancer patients for Herceptin therapy. Users should refer to the package inserts of specific assay kits for information on the Intended Use, and the validation and performance of each assay. Limitations in assay precision make it inadvisable to rely on a single method to rule out potential Herceptin benefit.

Treatment outcomes for adjuvant breast cancer (Studies 2 and 3) and for metastatic breast cancer (Study 5) as a function of IHC and FISH testing are provided in [Tables 8 and 10](#).

Assessment of HER2 protein overexpression and HER2 gene amplification in metastatic gastric cancer should be performed using FDA-approved tests specifically for gastric cancers due to differences in gastric vs. breast histopathology, including incomplete membrane staining and more frequent heterogeneous expression of HER2 seen in gastric cancers. Study 7 demonstrated that gene amplification and protein overexpression were not as well correlated as with breast cancer.

Treatment outcomes for metastatic gastric cancer (Study 7), based on HER2 gene amplification (FISH) and HER2 protein overexpression (IHC) test results are provided in [Table 12](#).

6 ADVERSE REACTIONS

The following adverse reactions are discussed in greater detail in other sections of the label:

- Cardiomyopathy [*see Warnings and Precautions (5.1)*]
- Infusion reactions [*see Warnings and Precautions (5.2)*]
- Embryo-fetal Toxicity [*see Warnings and Precautions (5.3)*]
- Pulmonary toxicity [*see Warnings and Precautions (5.4)*]
- Exacerbation of chemotherapy-induced neutropenia [*see Warnings and Precautions (5.5)*]

The most common adverse reactions in patients receiving Herceptin in the adjuvant and metastatic breast cancer setting are fever, nausea, vomiting, infusion reactions, diarrhea, infections, increased cough, headache, fatigue, dyspnea, rash, neutropenia, anemia, and myalgia. Adverse reactions requiring interruption or discontinuation of Herceptin treatment include CHF, significant decline in left ventricular cardiac function, severe infusion reactions, and pulmonary toxicity [*see Dosage and Administration (2.2)*].

In the metastatic gastric cancer setting, the most common adverse reactions ($\geq 10\%$) that were increased ($\geq 5\%$ difference) in the Herceptin arm as compared to the chemotherapy alone arm were neutropenia, diarrhea, fatigue, anemia, stomatitis, weight loss, upper respiratory tract infections, fever, thrombocytopenia, mucosal inflammation, nasopharyngitis, and dysgeusia. The most common adverse reactions which resulted in discontinuation of treatment on the Herceptin-containing arm in the absence of disease progression were infection, diarrhea, and febrile neutropenia.

6.1 Clinical Trials Experience

Because clinical trials are conducted under widely varying conditions, adverse reaction rates observed in the clinical trials of a drug cannot be directly compared to rates in the clinical trials of another drug and may not reflect the rates observed in practice.

Adjuvant Breast Cancer Studies

The data below reflect exposure to Herceptin across three randomized, open-label studies, Studies 1, 2, and 3, with (n= 3355) or without (n= 3308) trastuzumab in the adjuvant treatment of breast cancer.

The data summarized in [Table 3](#) below, from Study 3, reflect exposure to Herceptin in 1678 patients; the median treatment duration was 51 weeks and median number of infusions was 18.

Among the 3386 patients enrolled in Study 3, the median age was 49 years (range: 21 to 80 years), 83% of patients were Caucasian, and 13% were Asian.

Table 3
Adverse Reactions for Study 3, All Grades^a:

Adverse Reaction	1 Year Herceptin (n= 1678)	Observation (n=1708)
<u>Cardiac</u>		
Hypertension	64 (4%)	35 (2%)
Dizziness	60 (4%)	29 (2%)
Ejection Fraction Decreased	58 (3.5%)	11 (0.6%)
Palpitations	48 (3%)	12 (0.7%)
Cardiac Arrhythmias ^b	40 (3%)	17 (1%)
Cardiac Failure Congestive	30 (2%)	5 (0.3%)
Cardiac Failure	9 (0.5%)	4 (0.2%)
Cardiac Disorder	5 (0.3%)	0 (0%)
Ventricular Dysfunction	4 (0.2%)	0 (0%)
<u>Respiratory Thoracic Mediastinal Disorders</u>		
Cough	81 (5%)	34 (2%)
Influenza	70 (4%)	9 (0.5%)
Dyspnea	57 (3%)	26 (2%)
URI	46 (3%)	20 (1%)
Rhinitis	36 (2%)	6 (0.4%)
Pharyngolaryngeal Pain	32 (2%)	8 (0.5%)
Sinusitis	26 (2%)	5 (0.3%)
Epistaxis	25 (2%)	1 (0.06%)
Pulmonary Hypertension	4 (0.2%)	0 (0%)
Interstitial Pneumonitis	4 (0.2%)	0 (0%)
<u>Gastrointestinal Disorders</u>		
Diarrhea	123 (7%)	16 (1%)
Nausea	108 (6%)	19 (1%)
Vomiting	58 (3.5%)	10 (0.6%)
Constipation	33 (2%)	17 (1%)
Dyspepsia	30 (2%)	9 (0.5%)
Upper Abdominal Pain	29 (2%)	15 (1%)
<u>Musculoskeletal & Connective Tissue Disorders</u>		
Arthralgia	137 (8%)	98 (6%)
Back Pain	91 (5%)	58 (3%)
Myalgia	63 (4%)	17 (1%)
Bone Pain	49 (3%)	26 (2%)
Muscle Spasm	46 (3%)	3 (0.2%)
<u>Nervous System Disorders</u>		
Headache	162 (10%)	49 (3%)
Paraesthesia	29 (2%)	11 (0.6%)
<u>Skin & Subcutaneous Tissue Disorders</u>		
Rash	70 (4%)	10 (0.6%)
Nail Disorders	43 (2%)	0 (0%)
Pruritis	40 (2%)	10 (0.6%)

Table 3 (cont'd)
Adverse Reactions for Study 3, All Grades^a:

Adverse Reaction	1 Year Herceptin (n= 1678)	Observation (n=1708)
<u>General Disorders</u>		
Pyrexia	100 (6%)	6 (0.4%)
Edema Peripheral	79 (5%)	37 (2%)
Chills	85 (5%)	0 (0%)
Aesthenia	75 (4.5%)	30 (2%)
Influenza-like Illness	40 (2%)	3 (0.2%)
Sudden Death	1 (.06%)	0 (0%)
<u>Infections</u>		
Nasopharyngitis	135 (8%)	43 (3%)
UTI	39 (3%)	13 (0.8%)
<u>Immune System Disorders</u>		
Hypersensitivity	10 (0.6%)	1 (0.06%)
Autoimmune Thyroiditis	4 (0.3%)	0 (0%)

^a The incidence of Grade 3/4 adverse reactions was <1% in both arms for each listed term.

^b Higher level grouping term.

The data from Studies 1 and 2 were obtained from 3206 patients, of whom 1635 received Herceptin; the median treatment duration was 50 weeks. The median age was 49 years (range: 24–80); 84% of patients were White, 7% Black, 4% Hispanic, and 4% Asian.

In Study 1, only Grade 3–5 adverse events, treatment-related Grade 2 events, and Grade 2–5 dyspnea were collected during and for up to 3 months following protocol-specified treatment. The following non-cardiac adverse reactions of Grade 2–5 occurred at an incidence of at least 2% greater among patients randomized to Herceptin plus chemotherapy as compared to chemotherapy alone: arthralgia (31% vs. 28%), fatigue (28% vs. 22%), infection (22% vs. 14%), hot flashes (17% vs. 15%), anemia (13% vs. 7%), dyspnea (12% vs. 4%), rash/desquamation (11% vs. 7%), neutropenia (7% vs. 5%), headache (6% vs. 4%), and insomnia (3.7% vs. 1.5%). The majority of these events were Grade 2 in severity.

In Study 2, data collection was limited to the following investigator-attributed treatment-related adverse reactions: NCI-CTC Grade 4 and 5 hematologic toxicities, Grade 3–5 non-hematologic toxicities, selected Grade 2–5 toxicities associated with taxanes (myalgia, arthralgias, nail changes, motor neuropathy, sensory neuropathy) and Grade 1–5 cardiac toxicities occurring during chemotherapy and/or Herceptin treatment. The following non-cardiac adverse reactions of Grade 2–5 occurred at an incidence of at least 2% greater among patients randomized to Herceptin plus chemotherapy as compared to chemotherapy alone: arthralgia (11% vs. 8.4%), myalgia (10% vs. 8%), nail changes (9% vs. 7%), and dyspnea (2.5% vs. 0.1%). The majority of these events were Grade 2 in severity.

Safety data from Study 4 reflect exposure to Herceptin as part of an adjuvant treatment regimen from 2124 patients receiving at least one dose of study treatment [AC-TH: n = 1068; TCH: n=1056]. The overall median treatment duration was 54 weeks in both the AC-TH and TCH arms. The median number of infusions was 26 in the AC-TH arm and 30 in the TCH arm, including weekly infusions during the chemotherapy phase and every three week dosing in the monotherapy period. Among these patients, the median age was 49 years (range 22 to 74 years). In Study 4, the toxicity profile was similar to that reported in Studies 1, 2, and 3 with the exception of a low incidence of CHF in the TCH arm.

Metastatic Breast Cancer Studies

The data below reflect exposure to Herceptin in one randomized, open-label study, Study 5, of chemotherapy with (n=235) or without (n=234) trastuzumab in patients with metastatic breast cancer, and one single-arm study (Study 6; n=222) in patients with metastatic breast cancer. Data in Table 4 are based on Studies 5 and 6.

Among the 464 patients treated in Study 5, the median age was 52 years (range: 25–77 years). Eighty-nine percent were White, 5% Black, 1% Asian and 5% other racial/ethnic groups. All patients received 4 mg/kg initial dose of Herceptin followed by 2 mg/kg weekly. The percentages of patients who received Herceptin treatment for ≥ 6 months and ≥ 12 months were 58% and 9%, respectively.

Among the 352 patients treated in single agent studies (213 patients from Study 6), the median age was 50 years (range 28–86 years), 86% were White, 3% were Black, 3% were Asian, and 8% in other racial/ethnic groups. Most of the patients received 4 mg/kg initial dose of Herceptin followed by 2 mg/kg weekly. The percentages of patients who received Herceptin treatment for ≥ 6 months and ≥ 12 months were 31% and 16%, respectively.

Table 4
Per-Patient Incidence of Adverse Reactions Occurring in $\geq 5\%$ of Patients in Uncontrolled Studies or at Increased Incidence in the Herceptin Arm (Studies 5 and 6)

	Single Agent ^a n = 352	Herceptin + Paclitaxel n = 91	Paclitaxel Alone n = 95	Herceptin + AC ^b n = 143	AC ^b Alone n = 135
<u>Body as a Whole</u>					
Pain	47%	61%	62%	57%	42%
Asthenia	42%	62%	57%	54%	55%
Fever	36%	49%	23%	56%	34%
Chills	32%	41%	4%	35%	11%
Headache	26%	36%	28%	44%	31%
Abdominal pain	22%	34%	22%	23%	18%
Back pain	22%	34%	30%	27%	15%
Infection	20%	47%	27%	47%	31%
Flu syndrome	10%	12%	5%	12%	6%
Accidental injury	6%	13%	3%	9%	4%
Allergic reaction	3%	8%	2%	4%	2%
<u>Cardiovascular</u>					
Tachycardia	5%	12%	4%	10%	5%
Congestive heart failure	7%	11%	1%	28%	7%

Table 4 (cont'd)

Per-Patient Incidence of Adverse Reactions Occurring in $\geq 5\%$ of Patients in Uncontrolled Studies or at Increased Incidence in the Herceptin Arm (Studies 5 and 6)

	Single Agent ^a n = 352	Herceptin + Paclitaxel n = 91	Paclitaxel Alone n = 95	Herceptin + AC ^b n = 143	AC ^b Alone n = 135
<u>Digestive</u>					
Nausea	33%	51%	9%	76%	77%
Diarrhea	25%	45%	29%	45%	26%
Vomiting	23%	37%	28%	53%	49%
Nausea and vomiting	8%	14%	11%	18%	9%
Anorexia	14%	24%	16%	31%	26%
<u>Heme & Lymphatic</u>					
Anemia	4%	14%	9%	36%	26%
Leukopenia	3%	24%	17%	52%	34%
<u>Metabolic</u>					
Peripheral edema	10%	22%	20%	20%	17%
Edema	8%	10%	8%	11%	5%
<u>Musculoskeletal</u>					
Bone pain	7%	24%	18%	7%	7%
Arthralgia	6%	37%	21%	8%	9%
<u>Nervous</u>					
Insomnia	14%	25%	13%	29%	15%
Dizziness	13%	22%	24%	24%	18%
Paresthesia	9%	48%	39%	17%	11%
Depression	6%	12%	13%	20%	12%
Peripheral neuritis	2%	23%	16%	2%	2%
Neuropathy	1%	13%	5%	4%	4%
<u>Respiratory</u>					
Cough increased	26%	41%	22%	43%	29%
Dyspnea	22%	27%	26%	42%	25%
Rhinitis	14%	22%	5%	22%	16%
Pharyngitis	12%	22%	14%	30%	18%
Sinusitis	9%	21%	7%	13%	6%
<u>Skin</u>					
Rash	18%	38%	18%	27%	17%
Herpes simplex	2%	12%	3%	7%	9%
Acne	2%	11%	3%	3%	< 1%
<u>Urogenital</u>					
Urinary tract infection	5%	18%	14%	13%	7%

^a Data for Herceptin single agent were from 4 studies, including 213 patients from Study 6.

^b Anthracycline (doxorubicin or epirubicin) and cyclophosphamide.

Metastatic Gastric Cancer

The data below are based on the exposure of 294 patients to Herceptin in combination with a fluoropyrimidine (capecitabine or 5-FU) and cisplatin (Study 7). In the Herceptin plus chemotherapy arm, the initial dose of Herceptin 8 mg/kg was administered on Day 1 (prior to

chemotherapy) followed by 6 mg/kg every 21 days until disease progression. Cisplatin was administered at 80 mg/m² on Day 1 and the fluoropyrimidine was administered as either capecitabine 1000 mg/m² orally twice a day on Days 1-14 or 5-fluorouracil 800 mg/m²/day as a continuous intravenous infusion Days 1 through 5. Chemotherapy was administered for six 21-day cycles. Median duration of Herceptin treatment was 21 weeks; median number of Herceptin infusions administered was eight.

Table 5
Study 7: Per Patient Incidence of Adverse Reactions of All Grades
(Incidence ≥5% between Arms) or Grade 3 /4 (Incidence >1% between Arms)
and Higher Incidence in Herceptin Arm

Body System/Adverse Event	Herceptin +FC (N = 294) N (%)		FC (N = 290) N (%)	
	<u>All Grades</u>	<u>Grades 3/4</u>	<u>All Grades</u>	<u>Grades 3/4</u>
<u>Investigations</u>				
Neutropenia	230 (78)	101 (34)	212 (73)	83 (29)
Hypokalemia	83 (28)	28 (10)	69 (24)	16 (6)
Anemia	81 (28)	36 (12)	61 (21)	30 (10)
Thrombocytopenia	47 (16)	14 (5)	33 (11)	8 (3)
<u>Blood And Lymphatic System Disorders</u>				
Febrile Neutropenia	—	15 (5)	—	8 (3)
<u>Gastrointestinal Disorders</u>				
Diarrhea	109 (37)	27 (9)	80 (28)	11 (4)
Stomatitis	72 (24)	2 (1)	43 (15)	6 (2)
Dysphagia	19 (6)	7 (2)	10 (3)	1 (≤1)
<u>Body as a Whole</u>				
Fatigue	102 (35)	12 (4)	82 (28)	7 (2)
Fever	54 (18)	3 (1)	36 (12)	0 (0)
Mucosal Inflammation	37 (13)	6 (2)	18 (6)	2 (1)
Chills	23 (8)	1 (≤1)	0 (0)	0 (0)
<u>Metabolism And Nutrition Disorders</u>				
Weight Decrease	69 (23)	6 (2)	40 (14)	7 (2)
<u>Infections And Infestations</u>				
Upper Respiratory Tract Infections	56 (19)	0 (0)	29 (10)	0 (0)
Nasopharyngitis	37 (13)	0 (0)	17 (6)	0 (0)
<u>Renal And Urinary Disorders</u>				
Renal Failure and Impairment	53 (18)	8 (3)	42 (15)	5 (2)
<u>Nervous System Disorders</u>				
Dysgeusia	28 (10)	0 (0)	14 (5)	0 (0)

The following subsections provide additional detail regarding adverse reactions observed in clinical trials of adjuvant breast, metastatic breast cancer, metastatic gastric cancer, or post-marketing experience.

Cardiomyopathy

Serial measurement of cardiac function (LVEF) was obtained in clinical trials in the adjuvant treatment of breast cancer. In Study 3, the median duration of follow-up was 12.6 months (12.4 months in the observation arm; 12.6 months in the 1-year Herceptin arm); and in Studies 1 and 2, 23 months in the AC-T arm, 24 months in the AC-TH arm. In Studies 1 and 2, 6% of patients were not permitted to initiate Herceptin following completion of AC chemotherapy due to cardiac dysfunction (LVEF < 50% or ≥ 15 point decline in LVEF from baseline to end of AC). Following initiation of Herceptin therapy, the incidence of new-onset dose-limiting myocardial dysfunction was higher among patients receiving Herceptin and paclitaxel as compared to those receiving paclitaxel alone in Studies 1 and 2, and in patients receiving Herceptin monotherapy compared to observation in Study 3 (see Table 6, Figures 1 and 2).

Table 6^a
Per-patient Incidence of New Onset
Myocardial Dysfunction (by LVEF) Studies 1, 2, 3 and 4

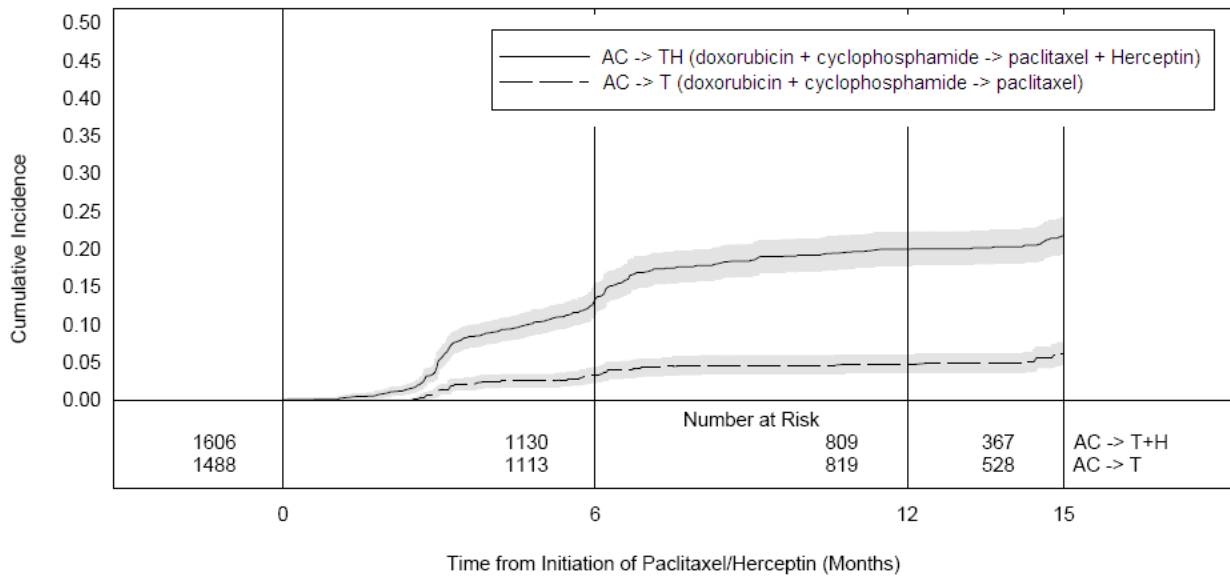
	LVEF <50% and Absolute Decrease from Baseline			Absolute LVEF Decrease	
	LVEF <50%	$\geq 10\%$ decrease	$\geq 16\%$ decrease	<20% and $\geq 10\%$	$\geq 20\%$
Studies 1 & 2^b					
AC→TH (n=1606)	22.8% (366)	18.3% (294)	11.7% (188)	33.4% (536)	9.2% (148)
AC→T (n=1488)	9.1% (136)	5.4% (81)	2.2% (33)	18.3% (272)	2.4% (36)
Study 3					
Herceptin (n=1678)	8.6% (144)	7.0% (118)	3.8% (64)	22.4% (376)	3.5% (59)
Observation (n=1708)	2.7% (46)	2.0% (35)	1.2% (20)	11.9% (204)	1.2% (21)
Study 4^c					
TCH (n=1056)	8.5% (90)	5.9% (62)	3.3% (35)	34.5% (364)	6.3% (67)
AC→TH (n=1068)	17% (182)	13.3% (142)	9.8% (105)	44.3% (473)	13.2% (141)
AC→T (n=1050)	9.5% (100)	6.6% (69)	3.3% (35)	34% (357)	5.5% (58)

^a For Studies 1, 2 and 3, events are counted from the beginning of Herceptin treatment. For Study 4, events are counted from the date of randomization.

^b Studies 1 and 2 regimens: doxorubicin and cyclophosphamide followed by paclitaxel (AC→T) or paclitaxel plus Herceptin (AC→TH).

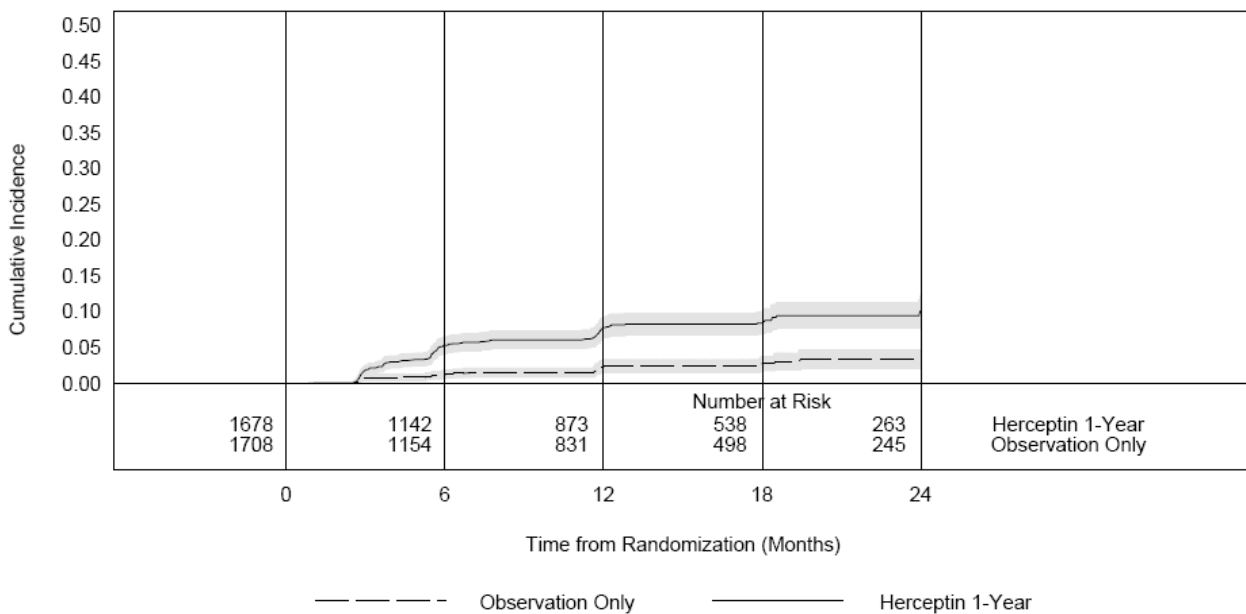
^c Study 4 regimens: doxorubicin and cyclophosphamide followed by docetaxel (AC→T) or docetaxel plus Herceptin (AC→TH); docetaxel and carboplatin plus Herceptin (TCH).

Figure 1
 Studies 1 and 2: Cumulative Incidence of Time to First LVEF
 Decline of ≥ 10 Percentage Points from Baseline and to
 Below 50% with Death as a Competing Risk Event



Time 0 is initiation of paclitaxel or Herceptin + paclitaxel therapy.

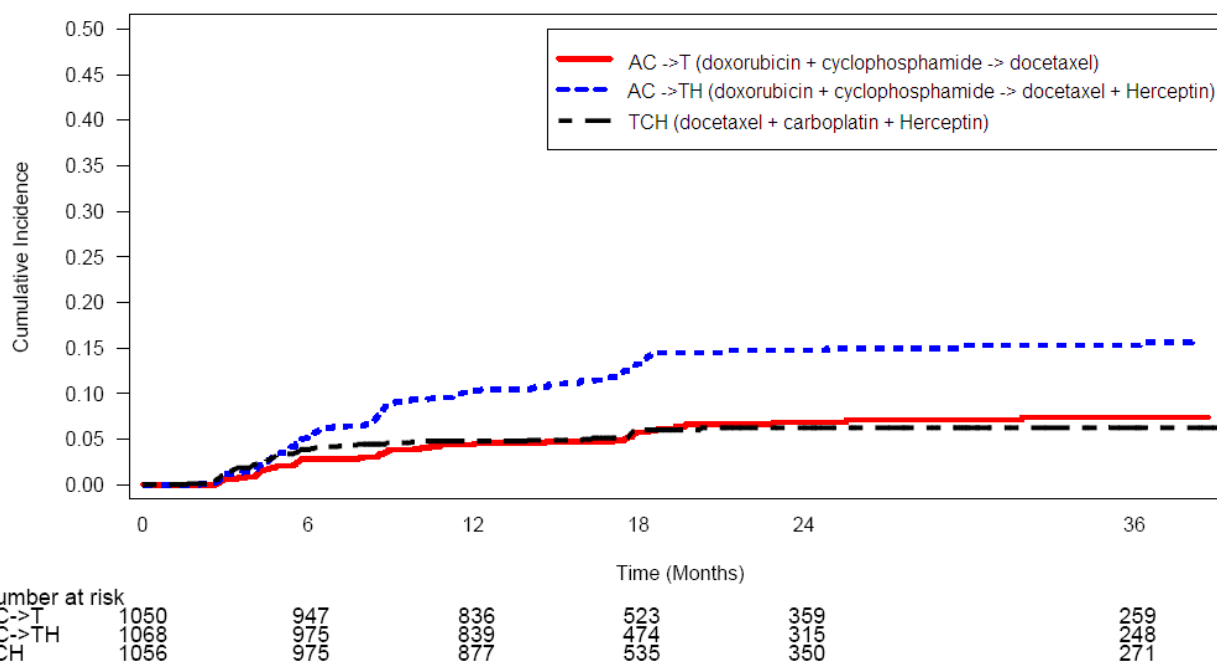
Figure 2
 Study 3: Cumulative Incidence of Time to First LVEF
 Decline of ≥ 10 Percentage Points from Baseline and to
 Below 50% with Death as a Competing Risk Event



Time 0 is the date of randomization.

Figure 3

Study 4: Cumulative Incidence of Time to First LVEF Decline of ≥ 10 Percentage Points from Baseline and to Below 50% with Death as a Competing Risk Event



Time 0 is the date of randomization.

The incidence of treatment emergent congestive heart failure among patients in the metastatic breast cancer trials was classified for severity using the New York Heart Association classification system (I–IV, where IV is the most severe level of cardiac failure) (see [Table 2](#)). In the metastatic breast cancer trials the probability of cardiac dysfunction was highest in patients who received Herceptin concurrently with anthracyclines.

In Study 7, 5.0% of patients in the Herceptin plus chemotherapy arm compared to 1.1% of patients in the chemotherapy alone arm had LVEF value below 50% with a $\geq 10\%$ absolute decrease in LVEF from pretreatment values.

Infusion Reactions

During the first infusion with Herceptin, the symptoms most commonly reported were chills and fever, occurring in approximately 40% of patients in clinical trials. Symptoms were treated with acetaminophen, diphenhydramine, and meperidine (with or without reduction in the rate of Herceptin infusion); permanent discontinuation of Herceptin for infusional toxicity was required in <1% of patients. Other signs and/or symptoms may include nausea, vomiting, pain (in some cases at tumor sites), rigors, headache, dizziness, dyspnea, hypotension, elevated blood pressure, rash, and asthenia. Infusional toxicity occurred in 21% and 35% of patients, and was severe in 1.4% and 9% of patients, on second or subsequent Herceptin infusions administered as monotherapy or in combination with chemotherapy, respectively. In the post-marketing setting, severe infusion reactions, including hypersensitivity, anaphylaxis, and angioedema have been reported.

Anemia

In randomized controlled clinical trials, the overall incidence of anemia (30% vs. 21% [Study 5]), of selected NCI-CTC Grade 2–5 anemia (12.5% vs. 6.6% [Study 1]), and of anemia requiring transfusions (0.1% vs. 0 patients [Study 2]) were increased in patients receiving Herceptin and chemotherapy compared with those receiving chemotherapy alone. Following the administration of

Herceptin as a single agent (Study 6), the incidence of NCI-CTC Grade 3 anemia was < 1%. In Study 7 (metastatic gastric cancer) on the Herceptin containing arm as compared to the chemotherapy alone arm the overall incidence of anemia was 28% compared 21% and of NCI CTC Grade 3/4 anemia was 12.2% compared to 10.3%.

Neutropenia

In randomized controlled clinical trials in the adjuvant setting, the incidence of selected NCI-CTC Grade 4–5 neutropenia (2% vs. 0.7% [Study 2]) and of selected Grade 2–5 neutropenia (7.1% vs. 4.5% [Study 1]) were increased in patients receiving Herceptin and chemotherapy compared with those receiving chemotherapy alone. In a randomized, controlled trial in patients with metastatic breast cancer, the incidences of NCI-CTC Grade 3/4 neutropenia (32% vs. 22%) and of febrile neutropenia (23% vs. 17%) were also increased in patients randomized to Herceptin in combination with myelosuppressive chemotherapy as compared to chemotherapy alone. In Study 7 (metastatic gastric cancer) on the Herceptin containing arm as compared to the chemotherapy alone arm, the incidence of NCI CTC Grade 3/4 neutropenia was 36.8% compared to 28.9%; febrile neutropenia 5.1% compared to 2.8%.

Infection

The overall incidences of infection (46% vs. 30% [Study 5]), of selected NCI-CTC Grade 2–5 infection/febrile neutropenia (22% vs. 14% [Study 1]) and of selected Grade 3–5 infection/febrile neutropenia (3.3% vs. 1.4%) [Study 2]), were higher in patients receiving Herceptin and chemotherapy compared with those receiving chemotherapy alone. The most common site of infections in the adjuvant setting involved the upper respiratory tract, skin, and urinary tract.

In Study 4, the overall incidence of infection was higher with the addition of Herceptin to AC-T but not to TCH [44% (AC-TH), 37% (TCH), 38% (AC-T)]. The incidences of NCI-CTC Grade 3–4 infection were similar [25% (AC-TH), 21% (TCH), 23% (AC-T)] across the three arms.

In a randomized, controlled trial in treatment of metastatic breast cancer, the reported incidence of febrile neutropenia was higher (23% vs. 17%) in patients receiving Herceptin in combination with myelosuppressive chemotherapy as compared to chemotherapy alone.

Pulmonary Toxicity

Adjuvant Breast Cancer

Among women receiving adjuvant therapy for breast cancer, the incidence of selected NCI-CTC Grade 2–5 pulmonary toxicity (14% vs. 5% [Study 1]) and of selected NCI-CTC Grade 3–5 pulmonary toxicity and spontaneous reported Grade 2 dyspnea (3.4 % vs. 1% [Study 2]) was higher in patients receiving Herceptin and chemotherapy compared with chemotherapy alone. The most common pulmonary toxicity was dyspnea (NCI-CTC Grade 2–5: 12% vs. 4% [Study 1]; NCI-CTC Grade 2–5: 2.5% vs. 0.1% [Study 2]).

Pneumonitis/pulmonary infiltrates occurred in 0.7% of patients receiving Herceptin compared with 0.3% of those receiving chemotherapy alone. Fatal respiratory failure occurred in 3 patients receiving Herceptin, one as a component of multi-organ system failure, as compared to 1 patient receiving chemotherapy alone.

In Study 3, there were 4 cases of interstitial pneumonitis in Herceptin-treated patients compared to none in the control arm.

Metastatic Breast Cancer

Among women receiving Herceptin for treatment of metastatic breast cancer, the incidence of pulmonary toxicity was also increased. Pulmonary adverse events have been reported in the post-marketing experience as part of the symptom complex of infusion reactions. Pulmonary events include bronchospasm, hypoxia, dyspnea, pulmonary infiltrates, pleural effusions, non-cardiogenic pulmonary edema, and acute respiratory distress syndrome. For a detailed description, see *Warnings and Precautions (5.4)*.

Thrombosis/Embolism

In 4 randomized, controlled clinical trials, the incidence of thrombotic adverse events was higher in patients receiving Herceptin and chemotherapy compared to chemotherapy alone in three studies (3.0% vs. 1.3% [Study 1], 2.5% and 3.7% vs. 2.2% [Study 4] and 2.1% vs. 0% [Study 5]).

Diarrhea

Among women receiving adjuvant therapy for breast cancer, the incidence of NCI-CTC Grade 2–5 diarrhea (6.2% vs. 4.8% [Study 1]) and of NCI-CTC Grade 3–5 diarrhea (1.6% vs. 0% [Study 2]), and of Grade 1–4 diarrhea (7% vs. 1% [Study 3]) were higher in patients receiving Herceptin as compared to controls. In Study 4, the incidence of Grade 3–4 diarrhea was higher [5.7% AC-TH, 5.5% TCH vs. 3.0% AC-T] and of Grade 1–4 was higher [51% AC-TH, 63% TCH vs. 43% AC-T] among women receiving Herceptin. Of patients receiving Herceptin as a single agent for the treatment of metastatic breast cancer, 25% experienced diarrhea. An increased incidence of diarrhea was observed in patients receiving Herceptin in combination with chemotherapy for treatment of metastatic breast cancer.

Renal Toxicity

In Study 7 (metastatic gastric cancer) on the Herceptin-containing arm as compared to the chemotherapy alone arm the incidence of renal impairment was 18% compared to 14.5%. Severe (Grade 3/4) renal failure was 2.7% on the Herceptin-containing arm compared to 1.7% on the chemotherapy only arm. Treatment discontinuation for renal insufficiency/failure was 2% on the Herceptin-containing arm and 0.3% on the chemotherapy only arm.

In the postmarketing setting, rare cases of nephrotic syndrome with pathologic evidence of glomerulopathy have been reported. The time to onset ranged from 4 months to approximately 18 months from initiation of Herceptin therapy. Pathologic findings included membranous glomerulonephritis, focal glomerulosclerosis, and fibrillary glomerulonephritis. Complications included volume overload and congestive heart failure.

6.2 Immunogenicity

As with all therapeutic proteins, there is a potential for immunogenicity. Among 903 women with metastatic breast cancer, human anti-human antibody (HAHA) to Herceptin was detected in one patient using an enzyme-linked immunosorbent assay (ELISA). This patient did not experience an allergic reaction. Samples for assessment of HAHA were not collected in studies of adjuvant breast cancer.

The incidence of antibody formation is highly dependent on the sensitivity and the specificity of the assay. Additionally, the observed incidence of antibody (including neutralizing antibody) positivity in an assay may be influenced by several factors including assay methodology, sample handling, timing of sample collection, concomitant medications, and underlying disease. For these reasons, comparison of the incidence of antibodies to Herceptin with the incidence of antibodies to other products may be misleading.

6.3 Post-Marketing Experience

The following adverse reactions have been identified during post approval use of Herceptin. Because these reactions are reported voluntarily from a population of uncertain size, it is not always possible to reliably estimate their frequency or establish a causal relationship to drug exposure.

- Infusion reaction [*see Warnings and Precautions (5.2)*]
- Oligohydramnios or oligohydramnios sequence, including pulmonary hypoplasia, skeletal abnormalities, and neonatal death [*see Warnings and Precautions (5.3)*]
- Glomerulopathy [*see Adverse Reactions (6.1)*]

7 DRUG INTERACTIONS

In Study 5, the mean serum trough concentration of trastuzumab was consistently elevated approximately 1.5-fold, when administered in combination with paclitaxel as compared to trough concentrations of trastuzumab when administered in combination with an anthracycline and cyclophosphamide.

In other pharmacokinetic studies, where Herceptin was administered in combination with paclitaxel, docetaxel or doxorubicin, Herceptin did not alter the plasma concentrations of these chemotherapeutic agents, or the metabolites that were analyzed. In a drug interaction substudy conducted in patients in Study 7, the pharmacokinetics of cisplatin, capecitabine and their metabolites were not altered when administered in combination with Herceptin.

8 USE IN SPECIFIC POPULATIONS

8.1 Pregnancy: Category D [*see Warnings and Precautions (5.3), Nonclinical Toxicology (13.2)*]

Herceptin can cause fetal harm when administered to a pregnant woman. In post-marketing reports use of Herceptin during pregnancy resulted in cases of oligohydramnios and of oligohydramnios sequence, manifesting as pulmonary hypoplasia, skeletal abnormalities, and neonatal death.

These case reports described oligohydramnios in pregnant women who received Herceptin either alone or in combination with chemotherapy. In some case reports, amniotic fluid index increased after Herceptin was stopped. In one case, Herceptin therapy resumed after the amniotic fluid index improved, and oligohydramnios recurred.

Monitor women exposed to Herceptin during pregnancy for oligohydramnios. If oligohydramnios occurs, perform fetal testing that is appropriate for gestational age and consistent with community standards of care. The efficacy of IV hydration in management of oligohydramnios due to Herceptin exposure is not known.

Advise women of the potential hazard to the fetus resulting from Herceptin exposure during pregnancy. Encourage pregnant women with breast cancer who are using Herceptin to enroll in MotHER-the Herceptin Pregnancy Registry: phone 1-800-690-6720. [*see Patient Counseling Information (17)*].

No teratogenic effects were observed in offspring from reproduction studies in cynomolgus monkeys at doses up to 25 times the recommended weekly human dose of 2 mg/kg trastuzumab. In mutant mice lacking HER2, embryos died in early gestation. Trastuzumab exposure was reported at delivery in offspring of cynomolgus monkeys treated during the early (Days 20-50 of gestation) or late (Days 120-150 of gestation) fetal development periods, at levels of 15 to 28% of the maternal blood levels.

8.3 Nursing Mothers

It is not known whether Herceptin is excreted in human milk, but human IgG is excreted in human milk. Published data suggest that breast milk antibodies do not enter the neonatal and infant circulation in substantial amounts.

Trastuzumab was present in the breast milk of lactating cynomolgus monkeys given 12.5 times the recommended weekly human dose of 2 mg/kg of Herceptin. Infant monkeys with detectable serum levels of trastuzumab did not have any adverse effects on growth or development from birth to 3 months of age; however, trastuzumab levels in animal breast milk may not accurately reflect human breast milk levels.

Because many drugs are secreted in human milk and because of the potential for serious adverse reactions in nursing infants from Herceptin, a decision should be made whether to discontinue nursing, or discontinue drug, taking into account the elimination half-life of trastuzumab and the importance of the drug to the mother.

8.4 Pediatric Use

The safety and effectiveness of Herceptin in pediatric patients has not been established.

8.5 Geriatric Use

Herceptin has been administered to 386 patients who were 65 years of age or over (253 in the adjuvant treatment and 133 in metastatic breast cancer treatment settings). The risk of cardiac dysfunction was increased in geriatric patients as compared to younger patients in both those receiving treatment for metastatic disease in Studies 5 and 6, or adjuvant therapy in Studies 1 and 2. Limitations in data collection and differences in study design of the 4 studies of Herceptin in adjuvant treatment of breast cancer preclude a determination of whether the toxicity profile of Herceptin in older patients is different from younger patients. The reported clinical experience is not adequate to determine whether the efficacy improvements (ORR, TTP, OS, DFS) of Herceptin treatment in older patients is different from that observed in patients <65 years of age for metastatic disease and adjuvant treatment.

In Study 7 (metastatic gastric cancer), of the 294 patients treated with Herceptin 108 (37%) were 65 years of age or older, while 13 (4.4%) were 75 and over. No overall differences in safety or effectiveness were observed.

10 OVERDOSAGE

There is no experience with overdosage in human clinical trials. Single doses higher than 8 mg/kg have not been tested.

11 DESCRIPTION

Herceptin (trastuzumab) is a humanized IgG1 kappa monoclonal antibody that selectively binds with high affinity to the extracellular domain of the human epidermal growth factor receptor 2 protein, HER2. Trastuzumab is produced by recombinant DNA technology in a mammalian cell (Chinese Hamster Ovary) culture containing the antibiotic gentamicin. Gentamicin is not detectable in the final product.

Herceptin is a sterile, white to pale yellow, preservative-free lyophilized powder for intravenous administration. Each multi-use vial of Herceptin contains 440 mg trastuzumab, 400 mg α,α -trehalose dihydrate, 9.9 mg L-histidine HCl, 6.4 mg L-histidine, and 1.8 mg polysorbate 20, USP. Reconstitution with 20 mL of the appropriate diluent (BWFI or SWFI) yields a solution containing 21 mg/mL trastuzumab, at a pH of approximately 6.

12 CLINICAL PHARMACOLOGY

12.1 Mechanism of Action

The HER2 (or c-erbB2) proto-oncogene encodes a transmembrane receptor protein of 185 kDa, which is structurally related to the epidermal growth factor receptor. Herceptin has been shown, in both *in vitro* assays and in animals, to inhibit the proliferation of human tumor cells that overexpress HER2.

Herceptin is a mediator of antibody-dependent cellular cytotoxicity (ADCC). *In vitro*, Herceptin-mediated ADCC has been shown to be preferentially exerted on HER2 overexpressing cancer cells compared with cancer cells that do not overexpress HER2.

12.2 Pharmacokinetics

The pharmacokinetics of trastuzumab were studied in women with metastatic breast cancer. Short duration intravenous infusions of 10 to 500 mg Herceptin once weekly demonstrated dose-dependent pharmacokinetics. Mean half-life increased and clearance decreased with increasing dose level. The half-life averaged 2 and 12 days at the 10 and 500 mg dose levels, respectively. The volume of

distribution of trastuzumab was approximately that of serum volume (44 mL/kg). At the highest weekly dose studied (500 mg), mean peak serum concentrations were 377 mcg/mL.

In studies using an initial dose of 4 mg/kg followed by a weekly dose of 2 mg/kg, a mean half-life of 6 days (range 1–32 days) was observed. Between weeks 16 and 32, trastuzumab serum concentrations reached a steady state with mean trough and peak concentrations of approximately 79 mcg/mL and 123 mcg/mL, respectively.

In a study of women receiving adjuvant therapy for breast cancer, a mean half-life of trastuzumab of 16 days (range: 11–23 days) was observed after an initial dose of 8 mg/kg followed by a dose of 6 mg/kg every three weeks. Between weeks 6 and 37, trastuzumab serum concentrations reached a steady-state with mean trough and peak concentrations of 63 mcg/mL and 216 mcg/mL, respectively.

In patients with metastatic gastric cancer (Study 7), mean serum trastuzumab trough concentrations at steady state were 24 to 63% lower as compared to the concentrations observed in patients with breast cancer receiving treatment for metastatic disease in combination with paclitaxel, as monotherapy for metastatic disease, or as adjuvant monotherapy.

Sixty-four percent (286/447) of women with metastatic breast cancer had detectable circulating extracellular domain of the HER2 receptor (shed antigen), which ranged as high as 1880 ng/mL (median 11 ng/mL). Patients with higher baseline shed antigen levels were more likely to have lower serum trough concentrations.

Data suggest that the disposition of trastuzumab is not altered based on age or serum creatinine (≤ 2.0 mg creatinine/dL).

13 NONCLINICAL TOXICOLOGY

13.1 Carcinogenesis, Mutagenesis, Impairment of Fertility

Herceptin has not been tested for carcinogenic potential.

No evidence of mutagenic activity was observed when trastuzumab was tested in the standard Ames bacterial and human peripheral blood lymphocyte mutagenicity assays, at concentrations of up to 5000 mcg/mL. In an *in vivo* micronucleus assay, no evidence of chromosomal damage to mouse bone marrow cells was observed following bolus intravenous doses of up to 118 mg/kg Herceptin.

A fertility study conducted in female cynomolgus monkeys at doses up to 25 times the weekly recommended human dose of 2 mg/kg trastuzumab and has revealed no evidence of impaired fertility, as measured by menstrual cycle duration and female sex hormone levels. Studies to evaluate the effects of trastuzumab on male fertility have not been conducted.

13.2 Animal Toxicology and/or Pharmacology

Reproductive Toxicology Studies

Reproductive toxicology studies have been conducted in cynomolgus monkeys at doses up to 25 times the weekly recommended human dose of 2 mg/kg Herceptin and have revealed no evidence of impaired fertility or harm to the fetus. However, HER2 protein expression is high in many embryonic tissues including cardiac and neural tissues; in mutant mice lacking HER2, embryos died in early gestation. Placental transfer of trastuzumab was detected at Caesarean section in offspring from pregnant cynomolgus monkeys dosed during the early (Days 20–50 of gestation) or late (Days 120–150 of gestation) fetal development periods.

14 CLINICAL STUDIES

14.1 Adjuvant Breast Cancer

The safety and efficacy of Herceptin in women receiving adjuvant chemotherapy for HER2 overexpressing breast cancer were evaluated in an integrated analysis of two randomized,

open-label, clinical trials (Studies 1 and 2) with a total of 3752 women, a third randomized, open-label, clinical trial (Study 3) with a total of 3386 women, and a fourth randomized, open-label clinical trial with a total of 3222 patients (Study 4).

Studies 1 and 2

In Studies 1 and 2, breast tumor specimens were required to show HER2 overexpression (3+ by IHC) or gene amplification (by FISH). HER2 testing was verified by a central laboratory prior to randomization (Study 2) or was required to be performed at a reference laboratory (Study 1). Patients with a history of active cardiac disease based on symptoms, abnormal electrocardiographic, radiologic, or left ventricular ejection fraction findings or uncontrolled hypertension (diastolic > 100 mmHg or systolic > 200 mmHg) were not eligible.

Patients were randomized (1:1) to receive doxorubicin and cyclophosphamide followed by paclitaxel (AC→paclitaxel) alone or paclitaxel plus Herceptin (AC→paclitaxel + Herceptin). In both trials, patients received four 21-day cycles of doxorubicin 60 mg/m² and cyclophosphamide 600 mg/m². Paclitaxel was administered either weekly (80 mg/m²) or every 3 weeks (175 mg/m²) for a total of 12 weeks in Study 1; paclitaxel was administered only by the weekly schedule in Study 2. Herceptin was administered at 4 mg/kg on the day of initiation of paclitaxel and then at a dose of 2 mg/kg weekly for a total of 52 weeks. Herceptin treatment was permanently discontinued in patients who developed congestive heart failure, or persistent/recurrent LVEF decline [*see Dosage and Administration (2.2)*]. Radiation therapy, if administered, was initiated after the completion of chemotherapy. Patients with ER+ and/or PR+ tumors received hormonal therapy. Disease-free survival (DFS), defined as the time from randomization to recurrence, occurrence of contralateral breast cancer, other second primary cancer, or death, was the main outcome measure of the combined efficacy analysis.

A total of 3752 patients were included in the efficacy analyses. The data from both arms in Study 1 and two of the three study arms in Study 2 were pooled for efficacy analyses. Of these patients, the median age was 49 years (range, 22–80 years; 6% > 65 years), 84% were white, 7% black, 4% Hispanic, and 4% Asian/Pacific Islander. Disease characteristics included 90% infiltrating ductal histology, 38% T1, 91% nodal involvement, 27% intermediate and 66% high grade pathology, and 53% ER+ and/or PR+ tumors. At the time of randomization 53% of the population were to receive paclitaxel on a weekly regimen, and the remainder were to receive a q3 week schedule of paclitaxel.

Study 3

In Study 3, breast tumor specimens were required to show HER2 overexpression (3+ by IHC) or gene amplification (by FISH) as determined at a central laboratory. Patients with node-negative disease were required to have ≥ T1c primary tumor. Patients with a history of congestive heart failure or LVEF <55%, uncontrolled arrhythmias, angina requiring medication, clinically significant valvular heart disease, evidence of transmural infarction on ECG, poorly controlled hypertension (systolic > 180 mm Hg or diastolic > 100 mm Hg) were not eligible.

Patients were randomized (1:1) upon completion of definitive surgery, and at least four cycles of chemotherapy to receive no additional treatment (n = 1693) or 1 year of Herceptin treatment (n = 1693). Patients undergoing a lumpectomy had also completed standard radiotherapy. Patients with ER+ and/or PgR+ disease received systemic adjuvant hormonal therapy at investigator discretion. Herceptin was administered with an initial dose of 8 mg/kg followed by subsequent doses of 6 mg/kg once every three weeks for a total of 52 weeks. The main outcome measure was disease-free survival (DFS), defined as in Studies 1 and 2.

Among the 3386 patients randomized to the two treatment arms, the median age was 49 years (range 21–80), 83% were Caucasian, and 13% were Asian. Disease characteristics: 94% infiltrating ductal carcinoma, 50% ER+ and/or PgR+, 57% node positive, 32% node negative, and in 11% of

patients, nodal status was not assessable due to prior neo-adjuvant chemotherapy. Ninety-six percent (1055/1098) of patients with node-negative disease had high-risk features: among the 1098 patients with node-negative disease, 49% (543) were ER- and PgR-, and 47% (512) were ER and/or PgR + and had at least one of the following high-risk features: pathological tumor size greater than 2 cm, Grade 2-3, or age < 35 years. Prior to randomization, 94% of patients had received anthracycline-based chemotherapy regimens.

Study 4

In Study 4, breast tumor specimens were required to show HER2 gene amplification (FISH+ only) as determined at a central laboratory. Patients were required to have either node-positive disease, or node-negative disease with at least one of the following high-risk features: ER/PR-negative, tumor size > 2 cm, age < 35 years, or histologic and/or nuclear Grade 2 or 3. Patients with a history of CHF, myocardial infarction, Grade 3 or 4 cardiac arrhythmia, angina requiring medication, clinically significant valvular heart disease, poorly controlled hypertension (diastolic > 100 mmHg), any T4 or N2 or known N3 or M1 breast cancer were not eligible.

Patients were randomized (1:1:1) to receive doxorubicin and cyclophosphamide followed by docetaxel (AC-T), doxorubicin and cyclophosphamide followed by docetaxel plus Herceptin (AC-TH), or docetaxel and carboplatin plus Herceptin (TCH). In both the AC-T and AC-TH arms, doxorubicin 60 mg/m² and cyclophosphamide 600 mg/m² were administered every 3 weeks for four cycles; docetaxel 100 mg/m² was administered every 3 weeks for four cycles. In the TCH arm, docetaxel 75 mg/m² and carboplatin (at a target AUC of 6 mg/mL/min as a 30- to 60-minute infusion) were administered every 3 weeks for six cycles. Herceptin was administered weekly (initial dose of 4 mg/kg followed by weekly dose of 2 mg/kg) concurrently with either T or TC, and then every 3 weeks (6 mg/kg) as monotherapy for a total of 52 weeks. Radiation therapy, if administered, was initiated after completion of chemotherapy. Patients with ER+ and/or PR+ tumors received hormonal therapy. Disease-free survival (DFS) was the main outcome measure.

Among the 3222 patients randomized, the median age was 49 (range 22 to 74 years; 6% ≥65 years). Disease characteristics included 54% ER+ and/or PR+ and 71% node positive. Prior to randomization, all patients underwent primary surgery for breast cancer.

Table 7
Efficacy Results from Adjuvant Treatment of
Breast Cancer (Studies 1 + 2, Study 3, and Study 4)

	DFS events	Hazard ratio (95% CI) p value	Deaths	Hazard ratio p value
<u>Studies 1 + 2^c</u>				
AC→TH (n=1872)	133	0.48 ^a (0.39, 0.59) p=< 0.0001 ^b	62	0.67 p=NS ^d
AC→T (n = 1880)	261		92	
<u>Study 3</u>				
Chemo→ Herceptin (n =1693)	127	0.54 (0.44, 0.67) p=< 0.0001 ^c	31	0.75 p=NS ^d
Chemo→ Observation (n = 1693)	219		40	
<u>Study 4^f</u>				
TCH (n=1075)	134	0.67 (0.54 – 0.84) p=0.0006 ^{b,g}	56	
AC→TH (n=1074)	121	0.60 (0.48 – 0.76) p=< 0.0001 ^{b,g}	49	
AC→T (n=1073)	180		80	

CI = confidence interval.

^a Hazard ratio estimated by Cox regression stratified by clinical trial, intended paclitaxel schedule, number of positive nodes, and hormone receptor status.

^b stratified log-rank test.

^c log-rank test.

^d NS= non-significant.

^e Studies 1 and 2 regimens: doxorubicin and cyclophosphamide followed by paclitaxel (AC→T) or paclitaxel plus Herceptin (AC→TH).

^f Study 4 regimens: doxorubicin and cyclophosphamide followed by docetaxel (AC→T) or docetaxel plus Herceptin (AC→TH); docetaxel and carboplatin plus Herceptin (TCH).

^g A two-sided alpha level of 0.025 for each comparison.

The results for DFS for the integrated analysis of Studies 1 and 2, Study 3, and Study 4 are presented in [Table 7](#). The duration of DFS for Studies 1 and 2 is presented in [Figure 4](#), and the duration of DFS for Study 4 is presented in [Figure 5](#). Across all four studies, there were insufficient numbers of patients within each of the following subgroups to determine if the treatment effect was different from that of the overall patient population: patients with low tumor grade, patients within specific ethnic/racial subgroups (Black, Hispanic, Asian/Pacific Islander patients), and patients >65 years of age.

Figure 4
Duration of Disease-Free Survival in
Patients with Adjuvant Treatment of Breast Cancer (Studies 1 and 2)

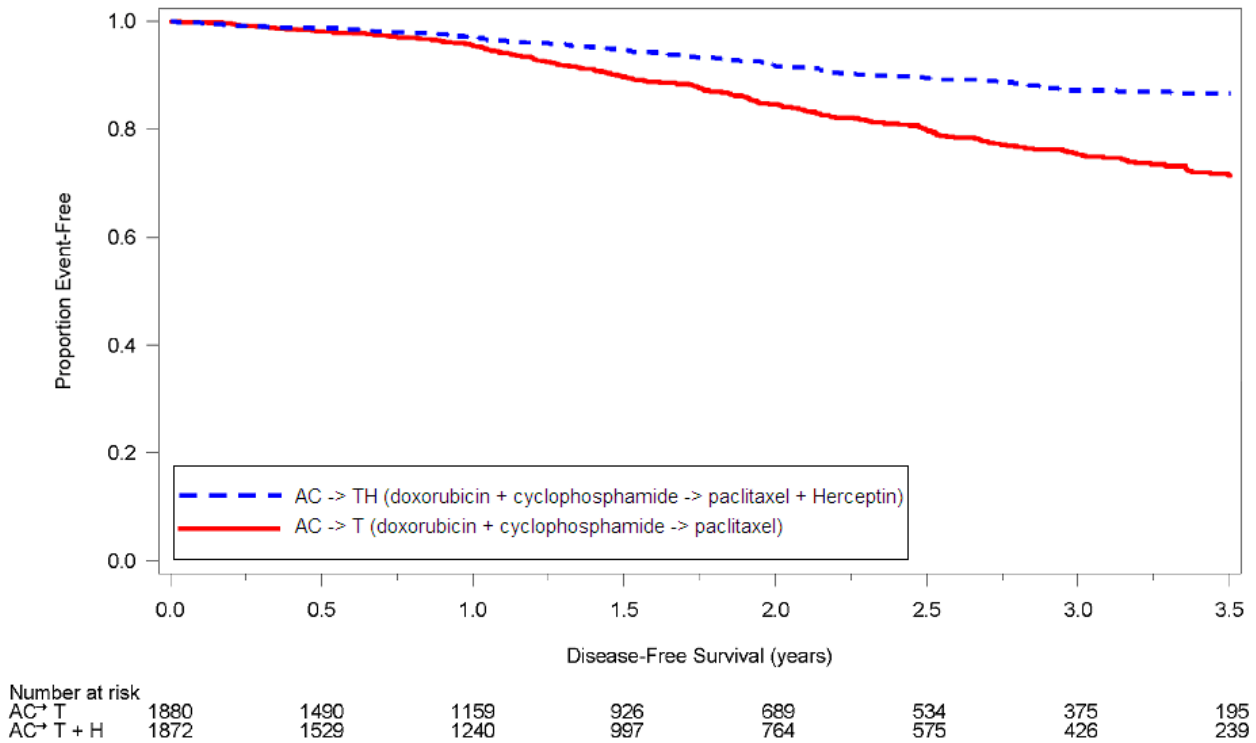
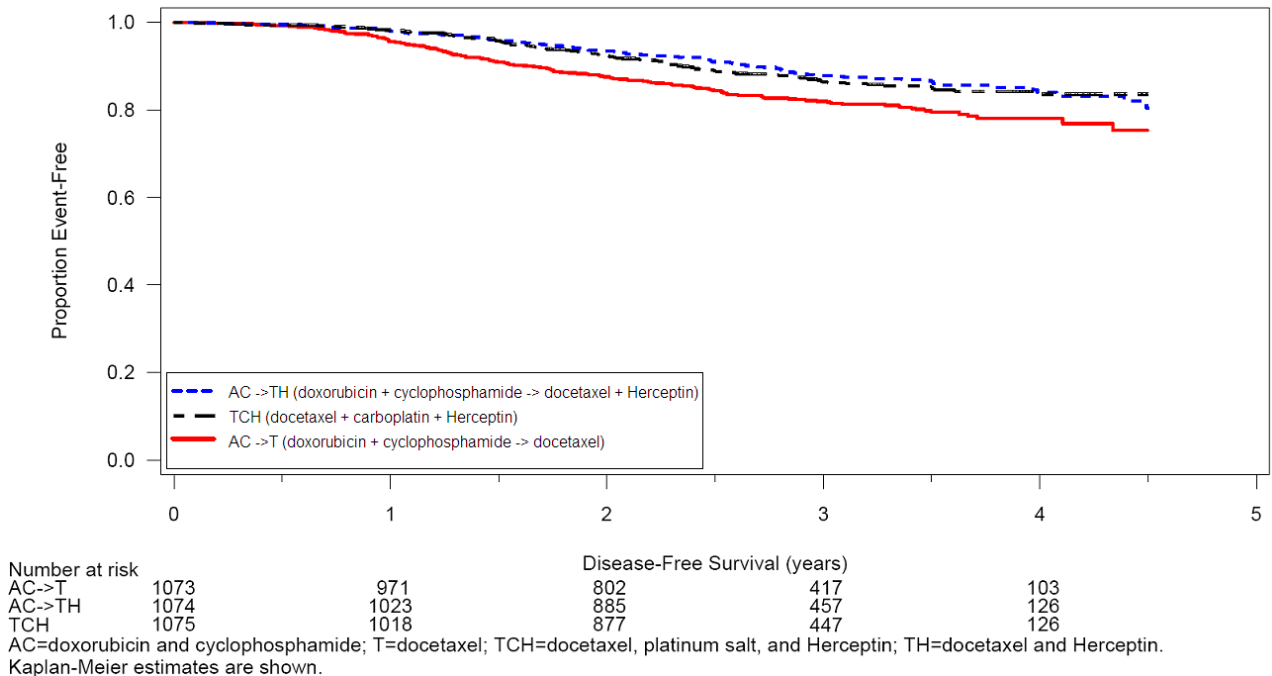


Figure 5
Duration of Disease-Free Survival in Patients with
Adjuvant Treatment of Breast Cancer (Study 4)



Exploratory analyses of DFS as a function of HER2 overexpression or gene amplification were conducted for patients in Studies 2 and 3, where central laboratory testing data were available. The results are shown in Table 8. The number of events in Study 2 was small with the exception of the IHC 3+/FISH+ subgroup, which constituted 81% of those with data. Definitive conclusions cannot be drawn regarding efficacy within other subgroups due to the small number of events. The number of events in Study 3 was adequate to demonstrate significant effects on DFS in the IHC 3+/FISH unknown and the FISH +/IHC unknown subgroups.

Table 8
Treatment Outcomes in Studies 2 and 3 as a Function of
HER2 Overexpression or Amplification

HER2 Assay Result ^a	Study 2		Study 3	
	Number of Patients	Hazard Ratio DFS (95% CI)	Number of Patients	Hazard Ratio DFS (95% CI)
<u>IHC 3+</u>				
FISH (+)	1170	0.42 (0.27, 0.64)	91	0.56 (0.13, 2.50)
FISH (-)	51	0.71 (0.04, 11.79)	8	—
FISH Unknown	51	0.69 (0.09, 5.14)	2258	0.53 (0.41, 0.69)
IHC < 3+ / FISH (+)	174	1.01 (0.18, 5.65)	299 ^b	0.53 (0.20, 1.42)
IHC unknown / FISH (+)	—	—	724	0.59 (0.38, 0.93)

^a IHC by HercepTest, FISH by PathVysion (HER2/CEP17 ratio \geq 2.0) as performed at a central laboratory.

^b All cases in this category in Study 3 were IHC 2+.

14.2 Metastatic Breast Cancer

The safety and efficacy of Herceptin in treatment of women with metastatic breast cancer were studied in a randomized, controlled clinical trial in combination with chemotherapy (Study 5, n=469 patients) and an open-label single agent clinical trial (Study 6, n=222 patients). Both trials studied patients with metastatic breast cancer whose tumors overexpress the HER2 protein. Patients were eligible if they had 2 or 3 levels of overexpression (based on a 0 to 3 scale) by immunohistochemical assessment of tumor tissue performed by a central testing lab.

Previously Untreated Metastatic Breast Cancer (Study 5)

Study 5 was a multicenter, randomized, open-label clinical trial conducted in 469 women with metastatic breast cancer who had not been previously treated with chemotherapy for metastatic disease. Tumor specimens were tested by IHC (Clinical Trial Assay, CTA) and scored as 0, 1+, 2+, or 3+, with 3+ indicating the strongest positivity. Only patients with 2+ or 3+ positive tumors were eligible (about 33% of those screened). Patients were randomized to receive chemotherapy alone or in combination with Herceptin given intravenously as a 4 mg/kg loading dose followed by weekly doses of Herceptin at 2 mg/kg. For those who had received prior anthracycline therapy in the adjuvant setting, chemotherapy consisted of paclitaxel (175 mg/m² over 3 hours every 21 days for at least six cycles); for all other patients, chemotherapy consisted of anthracycline plus cyclophosphamide (AC: doxorubicin 60 mg/m² or epirubicin 75 mg/m² plus 600 mg/m² cyclophosphamide every 21 days for six cycles). Sixty-five percent of patients randomized to

receive chemotherapy alone in this study received Herceptin at the time of disease progression as part of a separate extension study.

Based upon the determination by an independent response evaluation committee the patients randomized to Herceptin and chemotherapy experienced a significantly longer median time to disease progression, a higher overall response rate (ORR), and a longer median duration of response, as compared with patients randomized to chemotherapy alone. Patients randomized to Herceptin and chemotherapy also had a longer median survival (see [Table 9](#)). These treatment effects were observed both in patients who received Herceptin plus paclitaxel and in those who received Herceptin plus AC; however the magnitude of the effects was greater in the paclitaxel subgroup.

Table 9
Study 5: Efficacy Results in
First-Line Treatment for Metastatic Breast Cancer

	Combined Results		Paclitaxel Subgroup		AC Subgroup	
	Herceptin + All Chemo- therapy (n = 235)	All Chemo- therapy (n = 234)	Herceptin + Paclitaxel (n = 92)	Paclitaxel (n = 96)	Herceptin + AC ^a (n = 143)	AC (n = 138)
Primary Endpoint						
<u>Median</u> <u>TTP(mos)</u> ^{b,c}	7.2	4.5	6.7	2.5	7.6	5.7
95% CI	7, 8	4, 5	5, 10	2, 4	7, 9	5, 7
p-value ^d	< 0.0001		< 0.0001		0.002	
Secondary Endpoints						
<u>Overall</u> <u>Response</u> <u>Rate</u> ^b	45	29	38	15	50	38
95% CI	39, 51	23, 35	28, 48	8, 22	42, 58	30, 46
p-value ^e	< 0.001		< 0.001		0.10	
<u>Median Resp</u> <u>Duration</u> <u>(mos)</u> ^{b,c}	8.3	5.8	8.3	4.3	8.4	6.4
25%, 75% Quartile	6, 15	4, 8	5, 11	4, 7	6, 15	4, 8
<u>Med Survival</u> <u>(mos)</u> ^c	25.1	20.3	22.1	18.4	26.8	21.4
95% CI	22, 30	17, 24	17, 29	13, 24	23, 33	18, 27
p-value ^d	0.05		0.17		0.16	

^a AC = Anthracycline (doxorubicin or epirubicin) and cyclophosphamide.

^b Assessed by an independent Response Evaluation Committee.

^c Kaplan-Meier Estimate.

^d log-rank test.

^e χ^2 -test.

Data from Study 5 suggest that the beneficial treatment effects were largely limited to patients with the highest level of HER2 protein overexpression (3+) (see [Table 10](#)).

Table 10
Treatment Effects in Study 5 as a
Function of HER2 Overexpression or Amplification

HER2 Assay Result	Number of Patients (N)	Relative Risk ^b for Time to Disease Progression (95% CI)	Relative Risk ^b for Mortality (95% CI)
CTA 2+ or 3+	469	0.49 (0.40, 0.61)	0.80 (0.64, 1.00)
FISH (+) ^a	325	0.44 (0.34, 0.57)	0.70 (0.53, 0.91)
FISH (-) ^a	126	0.62 (0.42, 0.94)	1.06 (0.70, 1.63)
CTA 2+	120	0.76 (0.50, 1.15)	1.26 (0.82, 1.94)
FISH (+)	32	0.54 (0.21, 1.35)	1.31 (0.53, 3.27)
FISH (-)	83	0.77 (0.48, 1.25)	1.11 (0.68, 1.82)
CTA 3+	349	0.42 (0.33, 0.54)	0.70 (0.51, 0.90)
FISH (+)	293	0.42 (0.32, 0.55)	0.67 (0.51, 0.89)
FISH (-)	43	0.43 (0.20, 0.94)	0.88 (0.39, 1.98)

^a FISH testing results were available for 451 of the 469 patients enrolled on study.

^b The relative risk represents the risk of progression or death in the Herceptin plus chemotherapy arm versus the chemotherapy arm.

Previously Treated Metastatic Breast Cancer (Study 6)

Herceptin was studied as a single agent in a multicenter, open-label, single-arm clinical trial (Study 6) in patients with HER2 overexpressing metastatic breast cancer who had relapsed following one or two prior chemotherapy regimens for metastatic disease. Of 222 patients enrolled, 66% had received prior adjuvant chemotherapy, 68% had received two prior chemotherapy regimens for metastatic disease, and 25% had received prior myeloablative treatment with hematopoietic rescue. Patients were treated with a loading dose of 4 mg/kg IV followed by weekly doses of Herceptin at 2 mg/kg IV.

The ORR (complete response+partial response), as determined by an independent Response Evaluation Committee, was 14%, with a 2% complete response rate and a 12% partial response rate. Complete responses were observed only in patients with disease limited to skin and lymph nodes. The overall response rate in patients whose tumors tested as CTA 3+ was 18% while in those that tested as CTA 2+, it was 6%.

14.3 Metastatic Gastric Cancer

The safety and efficacy of Herceptin in combination with cisplatin and a fluoropyrimidine (capecitabine or 5-fluorouracil) were studied in patients previously untreated for metastatic gastric or gastroesophageal junction adenocarcinoma (Study 7). In this open-label, multi-center trial, 594 patients were randomized 1:1 to Herceptin in combination with cisplatin and a fluoropyrimidine (FC+H) or chemotherapy alone (FC). Randomization was stratified by extent of disease (metastatic vs. locally advanced), primary site (gastric vs. gastroesophageal junction), tumor measurability (yes vs. no), ECOG performance status (0,1 vs. 2), and fluoropyrimidine (capecitabine vs. 5-fluorouracil). All patients were either HER2 gene amplified (FISH+) or HER2 overexpressing (IHC 3+). Patients were also required to have adequate cardiac function (e.g., LVEF > 50%).

On the Herceptin-containing arm, Herceptin was administered as an IV infusion at an initial dose of 8 mg/kg followed by 6 mg/kg every 3 weeks until disease progression. On both study arms cisplatin was administered at a dose of 80 mg/m² Day 1 every 3 weeks for 6 cycles as a 2 hour IV

infusion. On both study arms capecitabine was administered at 1000 mg/m² dose orally twice daily (total daily dose 2000 mg/m²) for 14 days of each 21 day cycle for 6 cycles. Alternatively continuous intravenous infusion (CIV) 5-fluorouracil was administered at a dose of 800 mg/m²/day from Day 1 through Day 5 every three weeks for 6 cycles.

The median age of the study population was 60 years (range: 21–83); 76% were male; 53% were Asian, 38% Caucasian, 5% Hispanic, 5% other racial/ethnic groups; 91% had ECOG PS of 0 or 1; 82% had primary gastric cancer and 18% had primary gastroesophageal adenocarcinoma. Of these patients, 23% had undergone prior gastrectomy, 7% had received prior neoadjuvant and/or adjuvant therapy, and 2% had received prior radiotherapy.

The main outcome measure of Study 7 was overall survival (OS), analyzed by the unstratified log-rank test. The final OS analysis based on 351 deaths was statistically significant (nominal significance level of 0.0193). An updated OS analysis was conducted at one year after the final analysis. The efficacy results of both the final and the updated analyses are summarized in Table 11 and Figure 6.

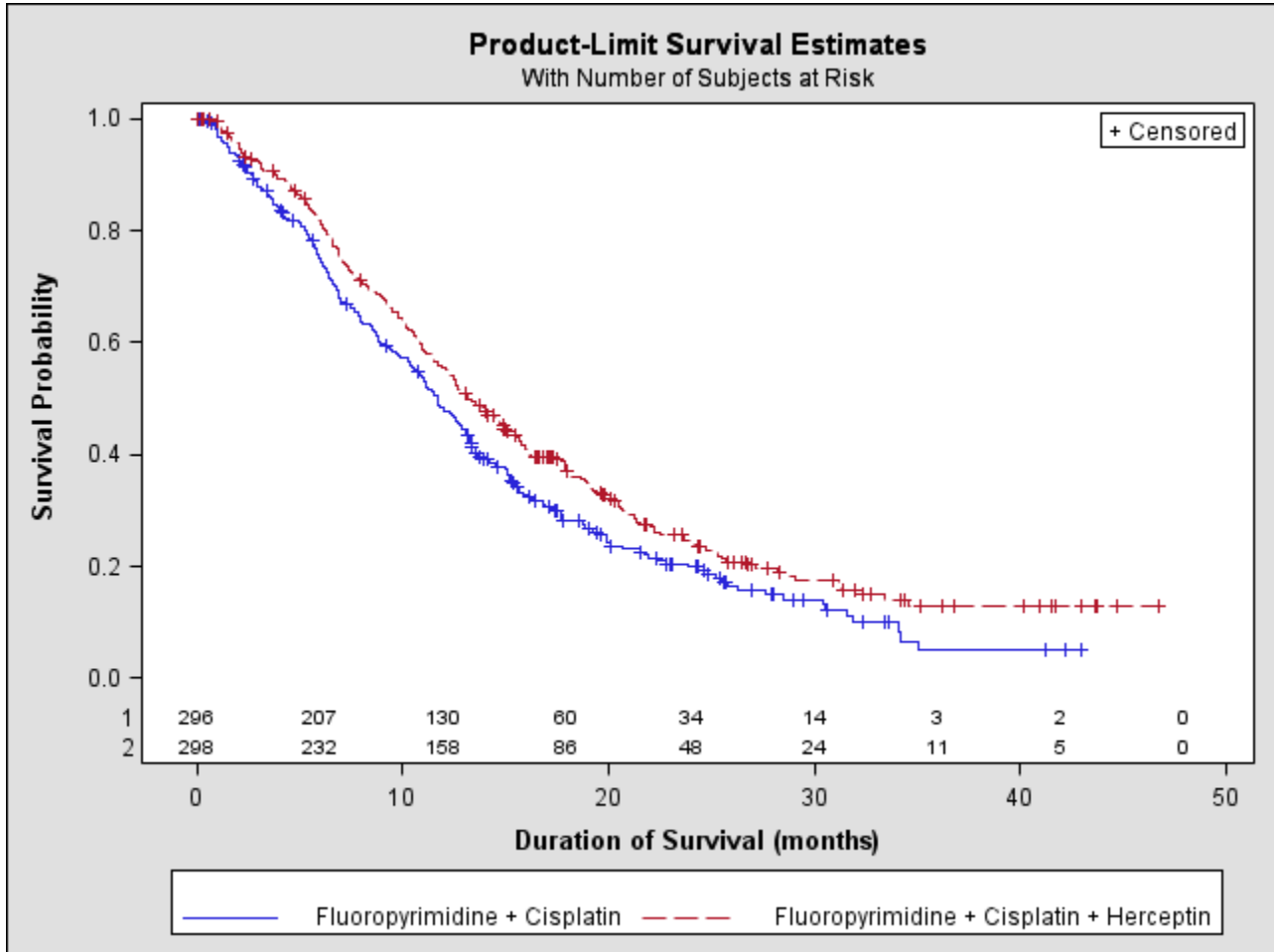
Table 11
Study 7: Overall Survival in ITT Population

	FC Arm N=296	FC + H Arm N=298
<u>Definitive (Second Interim) Overall Survival</u>		
No. Deaths (%)	184 (62.2%)	167 (56.0%)
Median	11.0	13.5
95% CI (mos.)	(9.4, 12.5)	(11.7, 15.7)
Hazard Ratio	0.73	
95% CI	(0.60, 0.91)	
p-value*, two-sided	0.0038	
<u>Updated Overall Survival</u>		
No. Deaths (%)	227 (76.7%)	221 (74.2%)
Median	11.7	13.1
95% CI (mos.)	(10.3, 13.0)	(11.9, 15.1)
Hazard Ratio	0.80	
95% CI	(0.67, 0.97)	

* Comparing with the nominal significance level of 0.0193.

Figure 6

Updated Overall Survival in Patients with Metastatic Gastric Cancer (Study 7)



An exploratory analysis of OS in patients based on HER2 gene amplification (FISH) and protein overexpression (IHC) testing is summarized in Table 12.

Table 12
Exploratory Analyses by HER2 Status using Updated Overall Survival Results

	FC (N= 296) ^a	FC+H (N=298) ^b
<u>FISH+ / IHC 0, 1+ subgroup (N=133)</u>		
No. Deaths / n (%)	57/71 (80%)	56/62 (90%)
Median OS Duration (mos.)	8.8	8.3
95% CI (mos.)	(6.4, 11.7)	(6.2, 10.7)
Hazard ratio (95% CI)	1.33 (0.92, 1.92)	
<u>FISH+ / IHC2+ subgroup (N=160)</u>		
No. Deaths / n (%)	65/80 (81%)	64/80 (80%)
Median OS Duration (mos.)	10.8	12.3
95% CI (mos.)	(6.8, 12.8)	(9.5, 15.7)
Hazard ratio (95% CI)	0.78 (0.55, 1.10)	
<u>FISH+ or FISH-/IHC3+^c subgroup (N=294)</u>		
No. Deaths / n (%)	104/143 (73%)	96/151 (64%)
Median OS Duration (mos.)	13.2	18.0
95% CI (mos.)	(11.5, 15.2)	(15.5, 21.2)
Hazard ratio (95% CI)	0.66 (0.50, 0.87)	

^a Two patients on the FC arm who were FISH+ but IHC status unknown were excluded from the exploratory subgroup analyses.

^b Five patients on the Herceptin-containing arm who were FISH+, but IHC status unknown were excluded from the exploratory subgroup analyses.

^c Includes 6 patients on chemotherapy arm, 10 patients on Herceptin arm with FISH-, IHC3+ and 8 patients on chemotherapy arm, 8 patients on Herceptin arm with FISH status unknown, IHC 3+.

16 HOW SUPPLIED/STORAGE AND HANDLING

16.1 How Supplied

Herceptin is supplied in a multi-use vial containing 440 mg trastuzumab as a lyophilized sterile powder, under vacuum. Each carton contains one vial Herceptin[®] and one vial (20 mL) of Bacteriostatic Water for Injection (BWFI), USP, containing 1.1% benzyl alcohol as a preservative. NDC 50242-134-68.

16.2 Stability and Storage

Vials of Herceptin are stable at 2–8°C (36–46°F) prior to reconstitution. Do not use beyond the expiration date stamped on the vial. A vial of Herceptin reconstituted with BWFI, as supplied, is stable for 28 days after reconstitution when stored refrigerated at 2–8°C (36–46°F). Discard any remaining multi-dose reconstituted solution after 28 days. A vial of Herceptin reconstituted with unpreserved SWFI (not supplied) should be used immediately and any unused portion discarded. **Do Not Freeze** Herceptin following reconstitution or dilution.

The solution of Herceptin for infusion diluted in polyvinylchloride or polyethylene bags containing 0.9% Sodium Chloride Injection, USP, should be stored at 2–8°C (36–46°F) for no more than 24 hours prior to use.

17 PATIENT COUNSELING INFORMATION

- Advise patients to contact a health care professional immediately for any of the following: new onset or worsening shortness of breath, cough, swelling of the ankles/legs, swelling of the face, palpitations, weight gain of more than 5 pounds in 24 hours, dizziness or loss of consciousness [*see Boxed Warning [Cardiomyopathy](#)*].
- Advise pregnant women and women of childbearing potential that Herceptin exposure can result in fetal harm [*see Warnings and Precautions (5.3) and Use in Specific Populations (8.1)*].
- Advise women of childbearing potential to use effective contraceptive methods during treatment and for a minimum of six months following Herceptin [*see Warnings and Precautions (5.3)*].
- Advise nursing mothers treated with Herceptin to discontinue nursing or discontinue Herceptin, taking into account the importance of the drug to the mother [*see Use in Specific Populations (8.3)*].
- Encourage women who are exposed to Herceptin during pregnancy to enroll in MoTHER- the Herceptin Pregnancy Registry (1-800-690-6720) [*see Warnings and Precautions (5.3) and Use in Specific Populations (8.1)*].

HERCEPTIN[®] [trastuzumab]

Manufactured by:

Genentech, Inc.

A Member of the Roche Group

1 DNA Way

South San Francisco, CA 94080-4990

4851301

Initial US Approval: September 1998

Revision Date: October 2010

Herceptin[®] is a registered trademark of Genentech, Inc.

©2010 Genentech, Inc.