

# Improving outcomes in first-line advanced pancreatic cancer



Safety and effectiveness have not been studied in pediatric patients.

Extending survival  
*for moments that matter*

## Indication and usage

### First-line advanced pancreatic cancer

Tarceva in combination with gemcitabine is indicated for the first-line treatment of patients with locally advanced, unresectable or metastatic pancreatic cancer.

Please see Important Safety Information on pages 13-15 and accompanying full prescribing information.

 **Tarceva**<sup>®</sup>  
erlotinib  
tablets

Proven to prolong survival



Safety and effectiveness have not been studied in pediatric patients.

## Extending survival *for moments that matter*

Tarceva plus gemcitabine significantly improved overall survival (OS) throughout the pivotal trial vs gemcitabine alone.<sup>1</sup>

Based on hazard ratio (HR), Tarceva plus gemcitabine improved OS by reducing the risk of death by 19%.<sup>1</sup>

- HR is an important measure of OS in rapidly progressive diseases such as pancreatic cancer, because it encompasses the whole observation period and not just a single point estimate, such as the median.<sup>2</sup>

Tarceva plus gemcitabine improved median OS vs gemcitabine alone: 6.4 months vs 6.0 months, respectively (HR=0.81; 95% CI=0.68-0.97;  $P=0.028$ ).<sup>1</sup>

In PA.3, Tarceva plus gemcitabine showed greater OS rates vs gemcitabine alone at 12 months.<sup>1</sup>

In patients receiving Tarceva plus gemcitabine for advanced pancreatic cancer, myocardial infarction/ischemia, cerebrovascular accident, and microangiopathic hemolytic anemia with thrombocytopenia have occurred, which have included fatalities.<sup>1</sup>

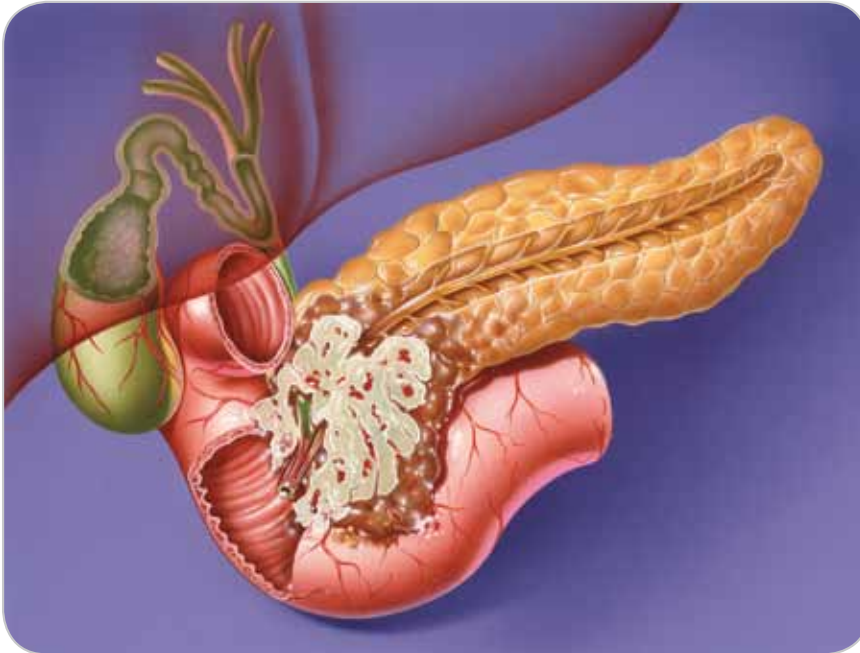
**Please see complete pancreatic cancer efficacy data on pages 8-9, Important Safety Information on pages 13-15, and accompanying full prescribing information.**



**Proven to prolong survival**

## Pancreatic tumors are difficult to treat

### Pancreatic cancer invading the duodenum



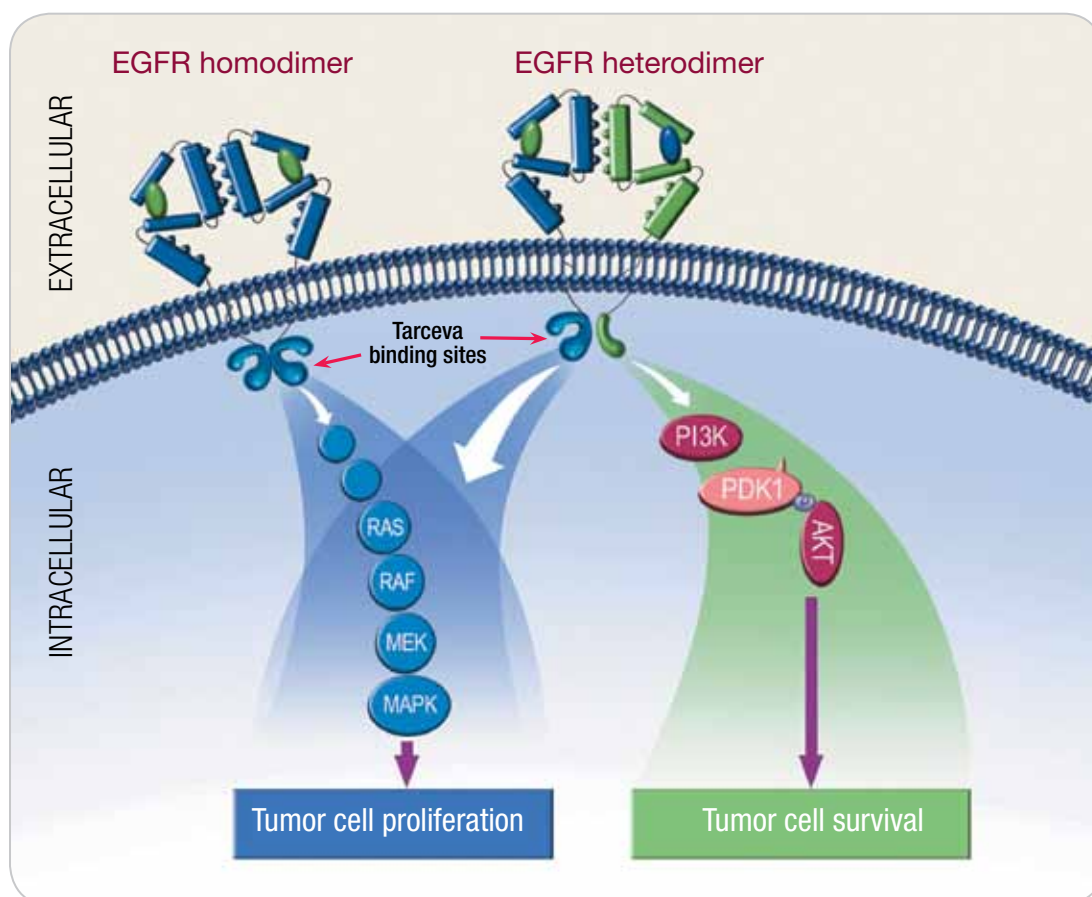
- The predominant form (approximately 90%) of pancreatic cancer is ductal adenocarcinoma.<sup>3</sup>
- Pancreatic ductal adenocarcinoma is characterized by poor vascularization, which creates a barrier for effective cytotoxic delivery.<sup>4,5</sup>
- Tumor cells with overexpression of EGFR or mutation of *EGFR* are more likely to demonstrate resistance to chemotherapy and radiotherapy.<sup>6</sup>

*"Exposure of pancreatic cancer cell lines to gemcitabine results in increased phosphorylation and thus activation of EGFR."<sup>7</sup>*

**Bryan A. Faller, MD**  
Fox Chase Cancer Center  
Philadelphia, PA

The combination of an EGFR TKI plus gemcitabine may be synergistic

EGFR has been shown to impact key signaling pathways in pancreatic tumor cells<sup>6,8</sup>



- Tarceva binds to the EGFR homodimer and heterodimer tyrosine kinase domains. This activity may inhibit both tumor cell proliferation and tumor cell survival.<sup>8</sup>
- Exposure of pancreatic cancer cell lines to the combination of an EGFR TKI and gemcitabine resulted in:
  - Enhanced cytotoxicity of gemcitabine<sup>9</sup>
  - Induced apoptosis in tumor cells<sup>10</sup>
- **The mechanism of clinical antitumor action of Tarceva is not fully characterized.<sup>1</sup>**

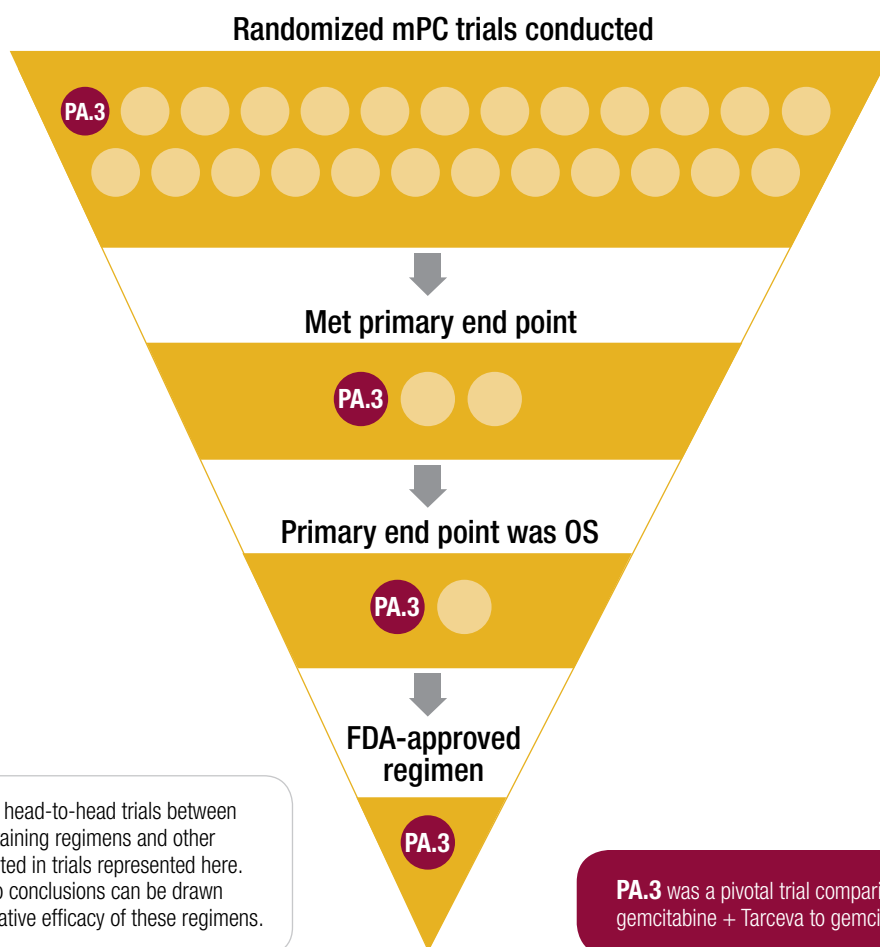
 **Tarceva**<sup>®</sup>  
erlotinib  
tablets

In first-line advanced pancreatic cancer, the combination of Tarceva plus gemcitabine offers

**The first and only FDA-approved combination therapy with a survival benefit<sup>2,3</sup>**

**Tarceva plus gemcitabine is the only FDA-approved combination therapy that has demonstrated a survival benefit in advanced pancreatic cancer in the last 14 years<sup>1,11-35</sup>**

Review of phase III trials in metastatic pancreatic adenocarcinoma over the last 14 years<sup>1,11-35\*</sup>



There are no head-to-head trials between Tarceva-containing regimens and other regimens tested in trials represented here. Therefore, no conclusions can be drawn about the relative efficacy of these regimens.

PA.3 was a pivotal trial comparing gemcitabine + Tarceva to gemcitabine alone.

\*As of October 2011.

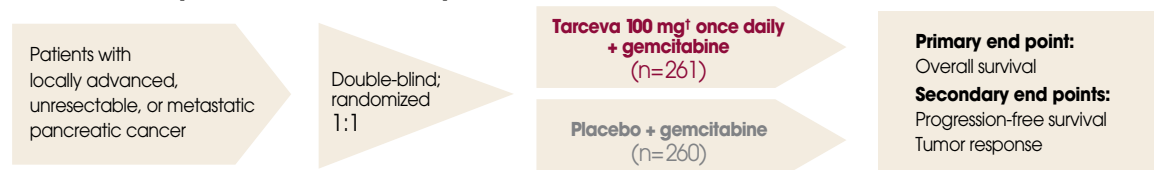
*"Erlotinib represents a notable step forward for patients and healthcare providers in a disease with a very poor prognosis."<sup>36</sup>*

**Malcolm J. Moore, MD**  
Princess Margaret Hospital  
Toronto, Canada

In first-line advanced pancreatic cancer, the combination of Tarceva plus gemcitabine offers

**The first and only FDA-approved combination therapy with a survival benefit<sup>2,3</sup>**

## The landmark PA.3 trial established Tarceva plus gemcitabine as a proven treatment option in advanced pancreatic cancer<sup>2</sup>



<sup>†</sup>This study also included a Tarceva 150-mg cohort (n=24 randomized patients). Too few patients were treated in the 150-mg cohort to draw conclusions.<sup>1</sup>

### • **Erlotinib plus gemcitabine is recommended as a treatment option for advanced pancreatic cancer in the NCCN guidelines.<sup>3</sup>**

- Tarceva plus gemcitabine is also recommended for the treatment of advanced pancreatic cancer in guidelines set forth by the following:
  - NCI PDQ<sup>37</sup>
  - American Cancer Society<sup>38</sup>
  - Pancreatic Cancer Action Network<sup>39</sup>
  - DRUGDEX Compendium<sup>40</sup>
  - NCCN Drugs and Biologics Compendium<sup>41</sup>
  - Clinical Pharmacology Compendium<sup>40</sup>

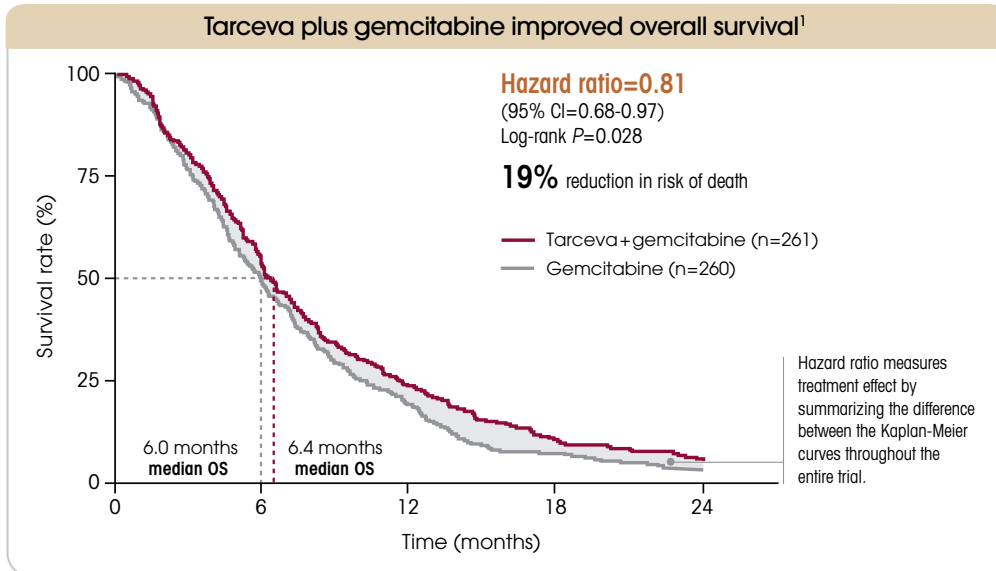
## Important Safety Information

- Warnings and precautions, including fatalities, associated with Tarceva plus gemcitabine in pancreatic cancer include interstitial lung disease (ILD), renal failure, hepatotoxicity, hepatic impairment, gastrointestinal perforation, bullous and exfoliative skin disorders, myocardial infarction/ischemia, cerebrovascular accident, microangiopathic hemolytic anemia with thrombocytopenia, ocular disorders, elevated International Normalized Ratio (INR), and potential bleeding. Tarceva is pregnancy category D.
- There have been reports of serious interstitial lung disease (ILD)-like events, including fatalities, in patients receiving Tarceva.
- Cases, including fatalities, of hepatic failure, hepatorenal syndrome, acute renal failure, gastrointestinal perforation, and bullous, blistering, and exfoliative skin conditions, including cases suggestive of Stevens-Johnson syndrome/toxic epidermal necrolysis, have been reported during use of Tarceva.
- In patients receiving Tarceva plus gemcitabine for pancreatic cancer, myocardial infarction/ischemia, cerebrovascular accident, and microangiopathic hemolytic anemia with thrombocytopenia have occurred.
- Renal insufficiency and corneal perforation and ulceration have also been reported during use of Tarceva.
- International Normalized Ratio (INR) elevations and infrequent reports of bleeding events, including gastrointestinal and non-gastrointestinal bleeding, have been reported in clinical studies, some associated with concomitant warfarin administration.



**Proven to prolong survival**

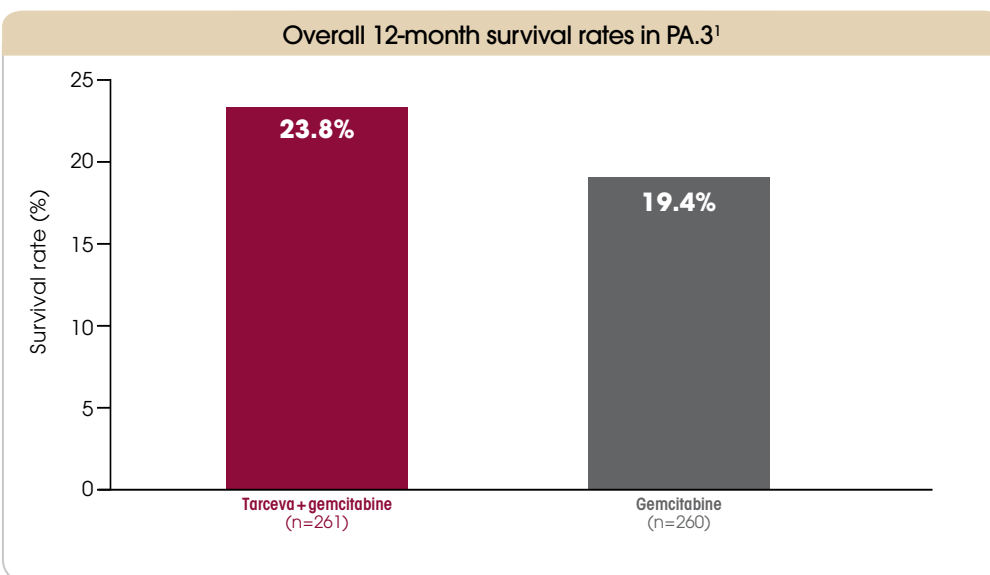
Proven survival in the treatment of advanced pancreatic cancer  
**Tarceva plus gemcitabine significantly improved overall survival throughout the pivotal trial vs gemcitabine alone<sup>1</sup>**



- HR is an important measure of overall survival in rapidly progressive diseases such as pancreatic cancer, because it encompasses the whole observation period and not just a single point estimate, such as the median.<sup>2</sup>

### Important Safety Information

- While receiving Tarceva therapy, women should be advised to avoid pregnancy or breastfeeding.
- The most common adverse reactions in patients with pancreatic cancer receiving Tarceva plus gemcitabine were fatigue, rash, nausea, anorexia, and diarrhea.



- With the addition of Tarceva, more patients lived a full year beyond diagnosis: approximately 1 in 4 with combination therapy vs 1 in 5 with gemcitabine alone.<sup>1</sup>

### Important Safety Information

- The use of Tarceva should be discontinued in patients who develop an acute onset of new or progressive pulmonary symptoms, such as dyspnea, cough, or fever, and in patients with interstitial lung disease, hepatic failure, or gastrointestinal perforation. Tarceva should be interrupted or discontinued in patients with severe dehydration, severe bullous, blistering, or exfoliative skin conditions, or acute/worsening ocular disorders.



Proven to prolong survival

## Most common adverse reactions

- The most common adverse reactions associated with Tarceva plus gemcitabine were generally mild to moderate and manageable.<sup>1,2</sup>

Most common adverse reactions occurring in Tarceva-treated pancreatic cancer patients: 100-mg cohort<sup>1</sup>

NCI-CTC grade	Tarceva + gemcitabine 1,000 mg/m <sup>2</sup> IV n=259			Placebo + gemcitabine 1,000 mg/m <sup>2</sup> IV n=256		
	Any grade	Grade 3	Grade 4	Any grade	Grade 3	Grade 4
MedDRA preferred term	%	%	%	%	%	%
Fatigue	73	14	2	70	13	2
Rash	69	5	0	30	1	0
Nausea	60	7	0	58	7	0
Anorexia	52	6	<1	52	5	<1
Diarrhea	48	5	<1	36	2	0

**Discontinuation due to rash and diarrhea was ≤ 1%<sup>1</sup>**

Discontinuation due to any adverse reaction was low. Rash and diarrhea each resulted in dose reductions in 2% of patients and discontinuation in up to 1% of patients.<sup>1</sup>

- The most common adverse reactions in patients with advanced pancreatic cancer receiving Tarceva 100 mg plus gemcitabine were fatigue, rash, nausea, anorexia, and diarrhea.<sup>1</sup>
- In the Tarceva plus gemcitabine arm, grades 3 or 4 rash and diarrhea were each reported in 5% of Tarceva-treated patients.<sup>1</sup>

### Rash management considerations

- Tarceva-related rash is generally mild to moderate and typically develops about 10 days after the start of treatment.<sup>1</sup>
- Employ a proactive approach to managing skin reactions.
- Patients with severe skin reactions may require dose reduction or temporary discontinuation of therapy.<sup>1</sup>

### Diarrhea management considerations

- Diarrhea can usually be managed with loperamide.<sup>1</sup>
- Patients with severe diarrhea who are unresponsive to loperamide should be monitored for dehydration, and may require dose reduction or temporary discontinuation of therapy.<sup>1</sup>

The **Tarceva Patient Support Line** provides patients with information on Tarceva dosing and adverse reaction management.

- 1-877-TARCEVA (1-877-827-2382)**
- Staffed 24/7 by oncology certified nurses**

## Retrospective analysis of the possible correlation between rash and overall survival

- Rash was one of the most common adverse reactions associated with Tarceva plus gemcitabine in the PA.3 trial.<sup>1</sup>
- 34% of patients receiving Tarceva plus gemcitabine experienced  $\geq$ grade 2 rash.<sup>1,42</sup>

---

- A retrospective analysis of the PA.3 trial suggested a possible correlation between rash and median overall survival.<sup>43</sup>
  - Patients with  $\geq$ grade 2 rash who received Tarceva plus gemcitabine had an increased median overall survival compared with those who received gemcitabine alone.<sup>43</sup>
  - Patients with  $\leq$ grade 1 rash who received Tarceva plus gemcitabine did not have an improvement in overall survival and thus may not benefit from this combination.<sup>43</sup>

---

- These results are exploratory and should be interpreted with caution.<sup>43</sup>
- These data do not support increasing the dosage of Tarceva to cause patients to develop rash.
- Patients with severe skin reactions may require dose reduction or temporary discontinuation of therapy.<sup>1</sup>

*"I try to do everything I can to enable [patients] to take the medication and to treat the rash so that their symptoms from it are not excessive. I am proactive...to help with the rash side effect."*

**From a May 19, 2010, roundtable discussion with Allyson Ocean, MD  
New York-Presbyterian Hospital  
New York, NY**



**Proven to prolong survival**

## Specialty pharmacies and dosing information

- Tarceva is available at retail and specialty pharmacies.

### Specialty pharmacy services

- Specific services vary among specialty pharmacies. However, most provide disease education or answer questions about the patient's therapy. Contact specialty pharmacies directly to ascertain the services each provides. Services that may be provided by specialty pharmacies include:
  - Prescription delivery
  - Therapy education
  - Therapy starter kits
  - Phone contact with patients
- The decision to use the services of a specialty pharmacy should be made solely by the patient and caregiver with guidance from the provider/treatment team.

### Dosing and administration

- The recommended once-daily dose of Tarceva for the treatment of advanced pancreatic cancer is **100 mg taken orally without food** in combination with gemcitabine.<sup>1</sup>
- Tarceva should be taken at least **one hour before or two hours after eating** and on an empty stomach to help ensure that patients obtain consistent plasma levels of the drug.<sup>1</sup>
- In patients who develop an acute onset of new or progressive pulmonary symptoms, such as dyspnea, cough, or fever, treatment with Tarceva should be interrupted pending diagnostic evaluation. If interstitial lung disease (ILD) is diagnosed, Tarceva should be discontinued and appropriate treatment instituted as necessary. Discontinue Tarceva for hepatic failure or gastrointestinal perforation. Interrupt or discontinue Tarceva in patients with dehydration who are at risk for renal failure, in patients with severe bullous, blistering, or exfoliative skin conditions, or in patients with acute/worsening ocular disorders.<sup>1</sup>
- Diarrhea can usually be managed with loperamide. Patients with severe diarrhea who are unresponsive to loperamide or who become dehydrated may require dose reduction or temporary interruption of therapy. Patients with severe skin reactions may also require dose reduction or temporary interruption of therapy.<sup>1</sup>
- When dose reduction is necessary, the Tarceva dose should be reduced by a 50-mg decrement.<sup>1</sup>
- Smokers should be advised to stop smoking while taking Tarceva, as plasma concentrations of erlotinib are reduced due to the effect of cigarette smoking.<sup>1</sup>



## Important Safety Information

- There have been reports of serious interstitial lung disease (ILD)-like events, including fatalities, in patients receiving Tarceva. In the pancreatic cancer study, the incidence was 2.5% in the Tarceva/gemcitabine group vs 0.4% in the placebo/gemcitabine group. The overall incidence of ILD-like events in approximately 32,000 Tarceva-treated patients from all studies (including uncontrolled studies and studies with concurrent chemotherapy) was approximately 1.1%.
- Reported diagnoses in patients suspected of having ILD-like events included pneumonitis, radiation pneumonitis, hypersensitivity pneumonitis, interstitial pneumonia, ILD, obliterative bronchiolitis, pulmonary fibrosis, acute respiratory distress syndrome, and lung infiltration. Symptoms started from 5 days to more than 9 months (median 39 days) after initiating Tarceva therapy.
- Tarceva should be interrupted for acute onset of new or progressive unexplained pulmonary symptoms such as dyspnea, cough, and fever. If ILD is diagnosed, Tarceva should be discontinued and appropriate treatment instituted as needed.
- Cases of hepatorenal syndrome, acute renal failure (including fatalities), and renal insufficiency have been reported. Some were secondary to baseline hepatic impairment, while others were associated with severe dehydration due to diarrhea, vomiting, and/or anorexia or concurrent chemotherapy use. In the event of dehydration, particularly in patients with contributing risk factors for renal failure (eg, pre-existing renal disease, medical conditions or medications that may lead to renal disease, or other predisposing conditions, including advanced age), Tarceva therapy should be interrupted and appropriate measures should be taken to intensively rehydrate the patient. Periodic monitoring of renal function and serum electrolytes is recommended in patients at risk of dehydration.
- Cases of hepatic failure and hepatorenal syndrome (including fatalities) have been reported during use of Tarceva, particularly in patients with baseline hepatic impairment. Therefore, periodic liver function testing (transaminases, bilirubin, and alkaline phosphatase) is recommended. In the setting of worsening liver function tests, dose interruption and/or dose reduction with frequent liver function test monitoring should be considered. Tarceva dosing should be interrupted or discontinued if total bilirubin is  $>3 \times \text{ULN}$  and/or transaminases are  $>5 \times \text{ULN}$  in the setting of normal pretreatment values.
- Treatment with Tarceva should be used with extra caution in patients with total bilirubin  $>3 \times \text{ULN}$ . Patients with hepatic impairment (total bilirubin  $>\text{ULN}$  or Child-Pugh A, B, and C) should be closely monitored during therapy with Tarceva. Tarceva dosing should be interrupted or discontinued if changes in liver function are severe, such as doubling of total bilirubin and/or tripling of transaminases in the setting of pretreatment values outside normal range.
- Gastrointestinal perforation (including fatalities) has been reported in patients receiving Tarceva. Patients receiving concomitant anti-angiogenic agents, corticosteroids, NSAIDs, and/or taxane-based chemotherapy or who have prior history of peptic ulceration or diverticular disease are at increased risk. Permanently discontinue Tarceva in patients who develop gastrointestinal perforation.



Proven to prolong survival

## Important Safety Information (continued)

- Bullous, blistering, and exfoliative skin conditions have been reported, including cases suggestive of Stevens-Johnson syndrome/toxic epidermal necrolysis, which in some cases were fatal. Interrupt or discontinue Tarceva treatment if the patient develops severe bullous, blistering or exfoliating conditions.
- In the pancreatic cancer trial, myocardial infarction/ischemia occurred in 2.3% of patients (6 patients) in the Tarceva/gemcitabine group vs 1.2% (3 patients) in the placebo/gemcitabine group. One patient in the Tarceva/gemcitabine group and one patient in the placebo/gemcitabine group died due to myocardial infarction.
- In the pancreatic cancer trial, 2.3% of patients (6 patients) in the Tarceva/gemcitabine group developed cerebrovascular accidents vs no cerebrovascular accidents in the placebo/gemcitabine group. One of the cerebrovascular accidents was hemorrhagic and fatal.
- In the pancreatic cancer trial, 0.8% of patients (2 patients) developed microangiopathic hemolytic anemia with thrombocytopenia in the Tarceva/gemcitabine group vs no cases in the placebo/gemcitabine group.
- Corneal perforation and ulceration have been reported during use of Tarceva. Other ocular disorders, including abnormal eyelash growth, keratoconjunctivitis sicca, or keratitis, have been observed with Tarceva treatment and are known risk factors for corneal ulceration/perforation. Interrupt or discontinue Tarceva therapy if patients present with acute/worsening ocular disorders such as eye pain.
- International Normalized Ratio (INR) elevations and infrequent reports of bleeding events, including gastrointestinal and non-gastrointestinal bleeding, have been reported in clinical studies, some associated with concomitant warfarin administration. Patients taking warfarin or other coumarin-derivative anticoagulants should be monitored regularly for changes in prothrombin time or INR. Some infrequent cases of gastrointestinal bleeding were also associated with concomitant NSAID administration.
- Tarceva is pregnancy category D. When receiving Tarceva, women of childbearing potential should be advised to avoid pregnancy and pregnant women apprised of the potential hazard to a fetus. Adequate contraception methods should be used during therapy, and for at least 2 weeks after completing therapy. Because of the potential for serious adverse reactions in nursing infants from Tarceva, a decision should be made whether to discontinue nursing or discontinue the drug.
- Erlotinib is metabolized predominantly by CYP3A4, and inhibitors of CYP3A4 would be expected to increase exposure. Caution should be used during co-treatment with Tarceva and ketoconazole or other strong CYP3A4 inhibitors such as, but not limited to, atazanavir, clarithromycin, indinavir, itraconazole, nefazodone, nelfinavir, ritonavir, saquinavir, telithromycin, troleandomycin (TAO), voriconazole, and grapefruit or grapefruit juice.

- The CYP3A4 inducer rifampicin has been shown to decrease erlotinib AUC; thus, alternate treatments lacking CYP3A4 inducing activity are strongly recommended. In the absence of an alternative treatment, Tarceva dose modification should be considered. If the Tarceva dose is adjusted upward, the dose will need to be reduced immediately to the indicated starting dose upon discontinuation of rifampicin or other CYP3A4 inducers such as, but not limited to, rifabutin, rifapentine, phenytoin, carbamazepine, phenobarbital, and St. John's wort.
- Drugs that alter the pH of the upper GI tract may alter the solubility of erlotinib and reduce its bioavailability. The concomitant use of proton pump inhibitors such as omeprazole with Tarceva should be avoided if possible. If patients need to be treated with an H<sub>2</sub>-receptor antagonist such as ranitidine, it should be used in a staggered manner. Tarceva must be taken once a day, 10 hours after the H<sub>2</sub>-receptor antagonist dosing and at least 2 hours before the next dose of H<sub>2</sub>-receptor antagonist. Although the effect of antacids on erlotinib pharmacokinetics has not been evaluated, the antacid dose and the Tarceva dose should be separated by several hours, if an antacid is necessary.
- Patients should be advised to stop smoking while taking Tarceva, as cigarette smoking has been shown to reduce erlotinib AUC. However, if patients continue to smoke, a cautious increase in the dose of Tarceva, not to exceed 300 mg, may be considered while monitoring the patient's safety. If the Tarceva dose is adjusted upward, the dose should be reduced immediately to the indicated starting dose upon cessation of smoking.
- The most common adverse reactions in patients with pancreatic cancer receiving Tarceva 100 mg plus gemcitabine were fatigue, rash, nausea, anorexia, and diarrhea. Severe rash and diarrhea (5% and 5% NCI-CTC, Grades 3/4, respectively) were reported. Rash and diarrhea each resulted in dose reductions in 2% of patients, and discontinuation in up to 1% of patients receiving Tarceva/gemcitabine.



## References

- References:** 1. Tarceva [package insert]. Farmingdale, NY: OSI Pharmaceuticals, LLC, an affiliate of Astellas Pharma US, Inc.; 2011.
2. Moore MJ, Goldstein D, Hamm J, et al. Erlotinib plus gemcitabine compared with gemcitabine alone in patients with advanced pancreatic cancer: a phase III trial of the National Cancer Institute of Canada Clinical Trials Group. *J Clin Oncol.* 2007;25(15):1960-1966.
3. NCCN Clinical Practice Guidelines in Oncology™: Pancreatic Adenocarcinoma V.1.2012. Available at: <http://www.nccn.org>. Accessed November 14, 2011. ©National Comprehensive Cancer Network, 2011. To view the most recent and complete version of the Guideline, go online to [www.nccn.org](http://www.nccn.org).
4. Olive KP, Jacobetz MA, Davidson CJ, et al. Inhibition of hedgehog signaling enhances delivery of chemotherapy in a mouse model of pancreatic cancer. *Science.* 2009;324(5933):1457-1461.
5. Olson P, Hanahan D. Breaching the cancer fortress. *Science.* 2009;324(5933):1400-1401.
6. Toulany M, Baumann M, Rodemann HP. Stimulated PI3K-AKT signaling mediated through ligand or radiation-induced EGFR depends indirectly, but not directly, on constitutive K-Ras activity. *Mol Cancer Res.* 2007;5(8):863-872.
7. Faller BA, Burtness B. Treatment of pancreatic cancer with epidermal growth factor receptor-targeted therapy. *Biologics.* 2009;3:419-428.
8. Frolov A, Schuller K, Tzeng C-WD, et al. ErbB3 expression and dimerization with EGFR influence pancreatic cancer cell sensitivity to erlotinib. *Cancer Biol Ther.* 2007;6(4):548-554.
9. Morgan MA, Parsels LA, Kollar LE, Normolle DP, Maybaum J, Lawrence TS. The combination of EGFR inhibitors with gemcitabine and radiation in pancreatic cancer. *Clin Cancer Res.* 2008;14(16):5142-5149.
10. Solorzano CC, Baker CH, Tsan R, et al. Optimization for the blockade of epidermal growth factor receptor signaling for therapy of human pancreatic carcinoma. *Clin Cancer Res.* 2001;7(8):2563-2572.
11. Cunningham D, Chau I, Stocken DD, et al. Phase III randomized comparison of gemcitabine versus gemcitabine plus capecitabine in patients with advanced pancreatic cancer. *J Clin Oncol.* 2009;27(33):5513-5518.
12. Poplin E, Feng Y, Berlin J, et al. Phase III, randomized study of gemcitabine and oxaliplatin versus gemcitabine (fixed-dose rate infusion) compared with gemcitabine (30-minute infusion) in patients with pancreatic carcinoma E6201: a trial of the Eastern Cooperative Oncology Group. *J Clin Oncol.* 2009;27(23):3778-3785.
13. Van Cutsem E, Vervenne WL, Bennouna J, et al. Phase III trial of bevacizumab in combination with gemcitabine and erlotinib in patients with metastatic pancreatic cancer. *J Clin Oncol.* 2009;27(13):2231-2237.
14. Herrmann R, Bodoky G, Ruhstaller T, et al. Gemcitabine plus capecitabine compared with gemcitabine alone in advanced pancreatic cancer: a randomized, multicenter, phase III trial of the Swiss Group for Clinical Cancer Research and the Central European Cooperative Oncology Group. *J Clin Oncol.* 2007;25(16):2212-2217.
15. Kindler HL, Niedzwiecki D, Hollis D, et al. Gemcitabine plus bevacizumab compared with gemcitabine plus placebo in patients with advanced pancreatic cancer: phase III trial of the Cancer and Leukemia Group B (CALGB 80303). *J Clin Oncol.* 2010;28(22):3617-3622.
16. Philip PA, Benedetti J, Corless CL, et al. Phase III study comparing gemcitabine plus cetuximab versus gemcitabine in patients with advanced pancreatic adenocarcinoma: Southwest Oncology Group—Directed Intergroup Trial S0205. *J Clin Oncol.* 2010;28(22):3605-3610.
17. Abou-Alfa GK, Letourneau R, Harker G, et al. Randomized phase III study of exatecan and gemcitabine compared with gemcitabine alone in untreated advanced pancreatic cancer. *J Clin Oncol.* 2006;24(27):4441-4447.
18. Heinemann V, Quietzsch D, Gieseler F, et al. Randomized phase III trial of gemcitabine plus cisplatin compared with gemcitabine alone in advanced pancreatic cancer. *J Clin Oncol.* 2006;24(24):3946-3952.
19. Stathopoulos GP, Syrigos K, Aravantinos G, et al. A multicenter phase III trial comparing irinotecan-gemcitabine (IG) with gemcitabine (G) monotherapy as first-line treatment in patients with locally advanced or metastatic pancreatic cancer. *Br J Cancer.* 2006;95(5):587-592.
20. Louvet C, Labianca R, Hammel P, et al. Gemcitabine in combination with oxaliplatin compared with gemcitabine alone in locally advanced or metastatic pancreatic cancer: results of a GERCOR and GISCAD phase III trial. *J Clin Oncol.* 2005;23(15):3509-3516.
21. Oettle H, Richards D, Ramanathan RK, et al. A phase III trial of pemetrexed plus gemcitabine versus gemcitabine in patients with unresectable or metastatic pancreatic cancer. *Ann Oncol.* 2005;16(10):1639-1645.
22. Riess H, Helm A, Niedergethmann M, et al. A randomised, prospective, multicenter, phase III trial of gemcitabine, 5-fluorouracil (5-FU), folinic acid vs. gemcitabine alone in patients with advanced pancreatic cancer. Presented at: 41st American Society of Clinical Oncology Annual Meeting; May 13-17, 2005; Orlando, FL. Abstract 4009.
23. Shapiro J, Marshall J, Karasek P, et al. G17DT+gemcitabine [Gem] versus placebo+Gem in untreated subjects with locally advanced, recurrent, or metastatic adenocarcinoma of the pancreas: results of a randomized, double-blind, multinational, multicenter study. Presented at: 41st American Society of Clinical Oncology Annual Meeting; May 13-17, 2005; Orlando, FL. Abstract 4012.

**24.** Rocha Lima CM, Green MR, Rotche R, et al. Irinotecan plus gemcitabine results in no survival advantage compared with gemcitabine monotherapy in patients with locally advanced or metastatic pancreatic cancer despite increased tumor response rate. *J Clin Oncol.* 2004;22(18):3776-3783. **25.** Van Cutsem E, van de Velde H, Karasek P, et al. Phase III trial of gemcitabine plus tipifarnib compared with gemcitabine plus placebo in advanced pancreatic cancer. *J Clin Oncol.* 2004;22(8):1430-1438. **26.** Berlin JD, Catalano P, Thomas JP, Kugler JW, Haller DG, Benson AB III. Phase III study of gemcitabine in combination with fluorouracil versus gemcitabine alone in patients with advanced pancreatic carcinoma: Eastern Cooperative Oncology Group trial E2297. *J Clin Oncol.* 2002;20(15):3270-3275. **27.** Bramhall SR, Schulz J, Nemunaitis J, Brown PD, Baillet M, Buckels JAC. A double-blind placebo-controlled, randomised study comparing gemcitabine and marimastat with gemcitabine and placebo as first line therapy in patients with advanced pancreatic cancer. *Br J Cancer.* 2002;87(2):161-167. **28.** Burris HA III, Moore MJ, Andersen J, et al. Improvements in survival and clinical benefit with gemcitabine as first-line therapy for patients with advanced pancreas cancer: a randomized trial. *J Clin Oncol.* 1997;15(6):2403-2413. **29.** Conroy T, Desseigne F, Ychou M, et al. Randomized phase III trial comparing FOLFIRINOX (F: 5FU/leucovorin [LV], irinotecan [I], and oxaliplatin [O]) versus gemcitabine (G) as first-line treatment for metastatic pancreatic adenocarcinoma (MPA): preplanned interim analysis results of the PRODIGE 4/ACCORD 11 trial. *J Clin Oncol.* 2010;28(suppl 15), abstract 4010. **30.** Kindler HL, Ioka T, Richel DJ, et al. Axitinib plus gemcitabine versus placebo plus gemcitabine in patients with advanced pancreatic adenocarcinoma: a double-blind randomised phase 3 study. *Lancet Oncol.* 2011;12:256-262. **31.** Colucci G, Labianca R, Di Costanzo F, et al. Randomized phase III trial of gemcitabine plus cisplatin compared with single-agent gemcitabine as first-line treatment of patients with advanced pancreatic cancer: the GIP-1 study. *J Clin Oncol.* 2010;28(10):1645-1651. **32.** Moore MJ, Hamm J, Dancey J, et al. Comparison of gemcitabine versus the matrix metalloproteinase inhibitor BAY 12-9566 in patients with advanced or metastatic adenocarcinoma of the pancreas: a phase III trial of the National Cancer Institute of Canada Clinical Trials Group. *J Clin Oncol.* 2003;21:3296-3302. **33.** Posner M, Chang KJ, Rosemurgy A, et al. Multi-center phase II/III randomized controlled clinical trial using TNFerade combined with chemoradiation in patients with locally advanced pancreatic cancer (LAPC). *J Clin Oncol.* 2007;25(suppl 18):4518. **34.** GenVec discontinues phase 3 clinical trial of TNFerade™ [press release]. Gaithersburg, MD: GenVec, Inc; March 29, 2010. <http://ir.genvec.com/phoenix.zhtml?c=124130&p=irol-newsArticle&ID=1407488&highlight=>. Accessed November 8, 2011. **35.** Riess H, Manges R, Karasek P, et al. Double-blind, placebo-controlled randomized phase III trial of aflibercept (A) plus gemcitabine (G) versus placebo (P) plus gemcitabine (G) in patients with metastatic pancreatic cancer: final results. *Ann Oncol.* 2010;21(suppl 6):vi12. **36.** FDA approves Tarceva® in combination with gemcitabine chemotherapy for treatment of locally advanced, inoperable or metastatic pancreatic cancer [news release]. Melville, NY, and South San Francisco, CA: OSI Pharmaceuticals, Inc and Genentech, Inc; November 2, 2005. <http://multivu.prnewswire.com/mnr/tarceva/22937/>. Accessed November 14, 2011. **37.** Pancreatic cancer treatment (PDQ®): stage IV pancreatic cancer. National Cancer Institute Web site. <http://www.cancer.gov/cancertopics/pdq/treatment/pancreatic/HealthProfessional/page7>. Updated August 13, 2010. Accessed November 14, 2011. **38.** Pancreatic cancer. American Cancer Society Web site. <http://documents.cancer.org/acs/groups/cid/documents/webcontent/003131-pdf.pdf>. Updated November 20, 2010. Accessed November 14, 2011. **39.** Learn about pancreatic cancer: targeted therapy. Pancreatic Cancer Action Network Web site. [http://www.pancan.org/section\\_facing\\_pancreatic\\_cancer/learn\\_about\\_pan\\_cancer/treatment/Targeted\\_therapy.php](http://www.pancan.org/section_facing_pancreatic_cancer/learn_about_pan_cancer/treatment/Targeted_therapy.php). Accessed November 14, 2011. **40.** Abernethy AP, Raman G, Balk EM, et al. Systematic review: reliability of compendia methods for off-label oncology indications. *Ann Intern Med.* 2009;150(5):336-343. **41.** National Comprehensive Cancer Network (NCCN). NCCN drugs and biologics compendium. Fort Washington, PA: NCCN; 2009. **42.** Data on file, OSI Pharmaceuticals, LLC, an affiliate of Astellas Pharma US, Inc. **43.** Senderowicz AM, Johnson JR, Sridhara R, Zimmerman P, Justice R, Pazdur R. Erlotinib/gemcitabine for first-line treatment of locally advanced or metastatic adenocarcinoma of the pancreas. *Oncology (Williston Park).* 2007;21(14):1696-1706.



Proven to prolong survival

## Improving outcomes in first-line advanced pancreatic cancer Extending survival for moments that matter

### OVERALL SURVIVAL AS PRIMARY END POINT

Tarceva plus gemcitabine is the only FDA-approved combination therapy that has demonstrated a survival benefit in advanced pancreatic cancer in the last 14 years.<sup>1,11-35</sup> Tarceva plus gemcitabine improved median OS vs gemcitabine alone: 6.4 months vs 6.0 months, respectively (HR=0.81; 95% CI=0.68-0.97;  $P=0.028$ ).<sup>1</sup>

### A RECOMMENDED TREATMENT OPTION

Erlotinib plus gemcitabine is FDA approved and recommended as a treatment option in the NCCN guidelines for the first-line treatment of advanced pancreatic cancer.<sup>3</sup>

### 19% REDUCTION IN THE RISK OF DEATH

Tarceva plus gemcitabine achieved a hazard ratio of 0.81.<sup>1</sup> HR is an important measure of overall survival in rapidly progressive diseases such as pancreatic cancer, because it encompasses the whole observation period and not just a single point estimate, such as the median.<sup>2</sup>

### ADVERSE REACTIONS

Warnings and precautions, including fatalities, associated with Tarceva plus gemcitabine in advanced pancreatic cancer include interstitial lung disease (ILD), renal failure, hepatotoxicity, hepatic impairment, gastrointestinal perforation, bullous and exfoliative skin disorders, myocardial infarction/ischemia, cerebrovascular accident, microangiopathic hemolytic anemia with thrombocytopenia, ocular disorders, elevated International Normalized Ratio (INR), and potential bleeding. Tarceva is pregnancy category D.<sup>1</sup>

The most common adverse reactions in patients with advanced pancreatic cancer receiving Tarceva 100 mg plus gemcitabine were fatigue, rash, nausea, anorexia, and diarrhea.<sup>1</sup>

### RESOURCES

Significant resources exist to support reimbursement and help ensure oral adherence, including:

- Tarceva Access Solutions  
1-888-249-4918 (weekdays 6 AM-5 PM PST)  
[www.TarcevaAccessSolutions.com](http://www.TarcevaAccessSolutions.com)
- The Tarceva Patient Support Line  
1-877-TARCEVA (1-877-827-2382)  
Nurses staffed 24/7



Please see Important Safety Information on pages 13-15 and accompanying full prescribing information.

Visit [Tarceva.com](http://Tarceva.com) for additional information and resources.



The Access Solutions logo is a registered trademark of Genentech, Inc.  
Astellas and the Flying Star logo are trademarks of Astellas Pharma Inc.  
Tarceva is a trademark of OSI Pharmaceuticals, LLC, Farmingdale, NY 11735, USA, an affiliate of Astellas Pharma US, Inc.  
©2011 OSI Pharmaceuticals, LLC, an affiliate of Astellas Pharma US, Inc., and Genentech, Inc. All rights reserved.  
011J-071-4476 TAR0000319502 11/11



Proven to prolong survival

# Tarceva®

## erlotinib

### tablets

#### HIGHLIGHTS OF PRESCRIBING INFORMATION

**These highlights do not include all the information needed to use TARCEVA safely and effectively. See full prescribing information for TARCEVA.**

**TARCEVA® (erlotinib) tablets, oral**  
**Initial U.S. Approval: 2004**

#### -----RECENT MAJOR CHANGES-----

Indications and Usage (1.1)	04/2010
Warnings and Precautions, Gastrointestinal Perforation (5.5)	04/2009
Warnings and Precautions, Bullous Skin Disorders (5.6)	04/2009
Warnings and Precautions, Ocular Disorders (5.10)	04/2009

#### -----INDICATIONS AND USAGE-----

TARCEVA is a kinase inhibitor indicated for:

- Maintenance treatment of patients with locally advanced or metastatic non-small cell lung cancer (NSCLC) whose disease has not progressed after four cycles of platinum-based first-line chemotherapy. (1.1)
- Treatment of locally advanced or metastatic non-small cell lung cancer after failure of at least one prior chemotherapy regimen. (1.1)
- First-line treatment of patients with locally advanced, unresectable or metastatic pancreatic cancer, in combination with gemcitabine. (1.2)

#### -----DOSAGE AND ADMINISTRATION-----

- The dose for NSCLC is 150 mg/day. (2.1)
- The dose for pancreatic cancer is 100 mg/day. (2.2)
- All doses of TARCEVA should be taken on an empty stomach at least one hour before or two hours after food. (2.1, 2.2)
- Reduce in 50 mg decrements, when necessary. (2.3)

#### -----DOSAGE FORMS AND STRENGTHS-----

- Tablets: 25 mg, 100 mg and 150 mg. (3)

#### -----CONTRAINDICATIONS-----

- None. (4)

#### -----WARNINGS AND PRECAUTIONS-----

- Interstitial Lung Disease (ILD)-like events, including fatalities have been infrequently reported. Interrupt TARCEVA if acute onset of new or progressive unexplained pulmonary symptoms, such

as dyspnea, cough and fever occur. Discontinue TARCEVA if ILD is diagnosed. (5.1)

- Cases of acute renal failure (including fatalities), and renal insufficiency have been reported. Interrupt TARCEVA in the event of dehydration. Monitor renal function and electrolytes in patients at risk of dehydration. (5.2)
- Cases of hepatic failure and hepatorenal syndrome (including fatalities) have been reported. Monitor periodic liver function testing. Interrupt or discontinue TARCEVA if liver function changes are severe. (5.3)
- Monitor patients with hepatic impairment closely. Interrupt or discontinue TARCEVA if changes in liver function are severe (5.4)
- Gastrointestinal perforations, including fatalities, have been reported. Discontinue TARCEVA. (5.5)
- Bullous and exfoliative skin disorders, including fatalities, have been reported. Interrupt or discontinue TARCEVA (5.6)
- Myocardial infarction/ischemia has been reported, including fatalities, in patients with pancreatic cancer. (5.7)
- Cerebrovascular accidents, including a fatality, have been reported in patients with pancreatic cancer. (5.8)
- Microangiopathic Hemolytic Anemia with thrombocytopenia has been reported in patients with pancreatic cancer. (5.9)
- Corneal perforation and ulceration have been reported. Interrupt or discontinue TARCEVA (5.10)
- International Normalized Ratio (INR) elevations and bleeding events, some associated with concomitant warfarin administration have been reported. Monitor patients taking warfarin or other coumarin-derivative anticoagulants. (5.11)
- TARCEVA can cause fetal harm when administered to a pregnant woman. Women should be advised to avoid pregnancy while on TARCEVA. (5.12)

#### -----ADVERSE REACTIONS-----

- The most common adverse reactions (>20%) in maintenance treatment are rash-like events and diarrhea. (6)
- The most common adverse reactions (>20%) in 2<sup>nd</sup> line NSCLC are rash, diarrhea, anorexia, fatigue, dyspnea, cough, nausea, infection and vomiting. (6)
- The most common adverse reactions (>20%) in pancreatic cancer are fatigue, rash, nausea, anorexia, diarrhea, abdominal pain, vomiting, weight decrease, infection, edema, pyrexia, constipation, bone pain, dyspnea, stomatitis and myalgia. (6)

**To report SUSPECTED ADVERSE REACTIONS, contact OSI Pharmaceuticals Inc. at 1-800-572-1932 or FDA at 1-800-FDA-1088 or [www.fda.gov/medwatch](http://www.fda.gov/medwatch).**

#### -----DRUG INTERACTIONS-----

- CYP3A4 inhibitors may increase erlotinib plasma concentrations. (7)
- CYP3A4 inducers may decrease erlotinib plasma concentrations. (7)
- CYP1A2 inducers may decrease erlotinib plasma concentrations. (7)
- Erlotinib solubility is pH dependent. Drugs that alter the pH of the upper GI tract may alter the solubility of erlotinib and hence its absorption. (7)
- Cigarette smoking decreases erlotinib plasma concentrations (7)

**See 17 for PATIENT COUNSELING INFORMATION.**  
**Revised: [4/2010]**

#### FULL PRESCRIBING INFORMATION: CONTENTS \*

##### 1 INDICATIONS AND USAGE

- 1.1 Non-Small Cell Lung Cancer (NSCLC)
- 1.2 Pancreatic Cancer

##### 2 DOSAGE AND ADMINISTRATION

- 2.1 Recommended Dose – NSCLC
- 2.2 Recommended Dose – Pancreatic Cancer
- 2.3 Dose Modifications

##### 3 DOSAGE FORMS AND STRENGTHS

##### 4 CONTRAINDICATIONS

##### 5 WARNINGS AND PRECAUTIONS

- 5.1 Pulmonary Toxicity
- 5.2 Renal Failure
- 5.3 Hepatotoxicity
- 5.4 Patients with Hepatic Impairment
- 5.5 Gastrointestinal perforation
- 5.6 Bullous and exfoliative skin disorders
- 5.7 Myocardial infarction/ischemia
- 5.8 Cerebrovascular accident
- 5.9 Microangiopathic Hemolytic Anemia with Thrombocytopenia
- 5.10 Ocular Disorders
- 5.11 Elevated International Normalized Ratio and Potential Bleeding
- 5.12 Use in Pregnancy

##### 6 ADVERSE REACTIONS

- 6.1 Clinical Trial Experience
- 6.2 Post-Marketing Experience

##### 7 DRUG INTERACTIONS

##### 8 USE IN SPECIFIC POPULATIONS

- 8.1 Pregnancy
- 8.3 Nursing Mothers
- 8.4 Pediatric Use
- 8.5 Geriatric Use
- 8.6 Gender
- 8.7 Race
- 8.8 Patients with Hepatic Impairment
- 8.9 Patients with Renal Impairment

##### 10 OVERDOSAGE

##### 11 DESCRIPTION

##### 12 CLINICAL PHARMACOLOGY

- 12.1 Mechanism of Action
- 12.3 Pharmacokinetics

##### 13 NONCLINICAL TOXICOLOGY

- 13.1 Carcinogenesis, Mutagenesis, Impairment of Fertility

##### 14 CLINICAL STUDIES

- 14.1 Non-Small Cell Lung Cancer (NSCLC) – TARCEVA monotherapy administered as maintenance treatment
- 14.2 NSCLC – TARCEVA administered as a Single-agent
- 14.3 NSCLC – TARCEVA Administered Concurrently with Chemotherapy
- 14.4 Pancreatic Cancer – TARCEVA Administered Concurrently with Gemcitabine

##### 16 HOW SUPPLIED/STORAGE AND HANDLING

##### 17 PATIENT COUNSELING INFORMATION

\*Sections or subsections omitted from the full prescribing information are not listed.

#### FULL PRESCRIBING INFORMATION

##### 1 INDICATIONS AND USAGE

###### 1.1 Non-Small Cell Lung Cancer (NSCLC)

TARCEVA monotherapy is indicated for the maintenance treatment of patients with locally advanced or metastatic non-small cell lung cancer whose disease has not progressed after four cycles of platinum-based first-line chemotherapy [see *Clinical Studies* (14.1)].

TARCEVA monotherapy is indicated for the treatment of patients with locally advanced or metastatic non-small cell lung cancer after failure of at least one prior chemotherapy regimen [see *Clinical Studies* (14.2)].

Results from two, multicenter, placebo-controlled, randomized, Phase 3 trials conducted in first-line patients with locally advanced or metastatic NSCLC showed no clinical benefit with the concurrent administration of TARCEVA with platinum-based chemotherapy [carboplatin and paclitaxel or gemcitabine and cisplatin] and its use is not recommended in that setting [see *Clinical Studies* (14.3)].

###### 1.2 Pancreatic Cancer

TARCEVA in combination with gemcitabine is indicated for the first-line treatment of patients with locally advanced, unresectable or metastatic pancreatic cancer [see *Clinical Studies* (14.4)].

##### 2 DOSAGE AND ADMINISTRATION

###### 2.1 NSCLC

The recommended daily dose of TARCEVA for NSCLC is 150 mg taken on an empty stomach at least one hour before or two hours after the ingestion of food. Treatment should continue until disease progression or unacceptable toxicity occurs. There is no evidence that treatment beyond progression is beneficial.

###### 2.2 Pancreatic Cancer

The recommended daily dose of TARCEVA for pancreatic cancer is 100 mg taken on an empty stomach at least one hour before or two hours after the ingestion of food, in combination with gemcitabine [see *Clinical Studies* (14.4) or the *gemcitabine package insert*]. Treatment should continue until disease progression or unacceptable toxicity occurs.

###### 2.3 Dose Modifications

In patients who develop an acute onset of new or progressive pulmonary symptoms, such as dyspnea, cough or fever, treatment with TARCEVA should be interrupted pending diagnostic evaluation. If Interstitial Lung Disease (ILD) is diagnosed, TARCEVA should be discontinued and appropriate treatment instituted as necessary [see *Warnings and Precautions* (5.1)]. Discontinue TARCEVA for hepatic failure or gastrointestinal perforation. Interrupt or discontinue TARCEVA in patients with dehydration who are at risk for renal failure, in patients with severe bullous, blistering or exfoliative skin conditions, or in patients with acute/worsening ocular disorders [see *Warnings and Precautions* (5.2, 5.3, 5.4, 5.5, 5.6, 5.10)]. Diarrhea can usually be managed with loperamide. Patients with severe diarrhea who are unresponsive to loperamide or who become dehydrated may require dose reduction or temporary interruption of therapy. Patients with severe skin reactions may also require dose reduction or temporary interruption of therapy. When dose reduction is necessary, the TARCEVA dose should be reduced in 50 mg decrements. In patients who are taking TARCEVA with a strong CYP3A4 inhibitor such as, but not limited to, atazanavir, clarithromycin, indinavir, itraconazole, ketoconazole, nefazodone, nelfinavir, ritonavir, saquinavir, telithromycin, troleandomycin (TAO), voriconazole, or grapefruit or grapefruit juice, a dose reduction should be considered if severe adverse reactions occur. Similarly, in patients who are taking TARCEVA with an inhibitor of both CYP3A4 and CYP1A2 like ciprofloxacin, a dose reduction of TARCEVA should be considered if severe adverse reactions occur [see *Drug Interactions* (7)].

Pre-treatment with the CYP3A4 inducer rifampicin decreased erlotinib AUC by about 2/3 to 4/5. Use of alternative treatments lacking CYP3A4 inducing activity is strongly recommended. If an alternative treatment is unavailable, an increase in the dose of TARCEVA should be considered as tolerated at two week intervals while monitoring the patient's safety. The maximum dose of TARCEVA studied in combination with rifampicin is 450 mg. If the TARCEVA dose is adjusted upward, the dose will need to be reduced immediately to the indicated starting dose upon discontinuation of rifampicin or other inducers. Other CYP3A4 inducers include, but are not limited to rifabutin, rifapentine, phenytoin, carbamazepine, phenobarbital and St. John's Wort. These too should be avoided if possible [see *Drug Interactions* (7)]. Cigarette smoking has been shown to reduce erlotinib exposure. Patients should be advised to stop smoking. If a patient continues to smoke, a cautious increase in the dose of TARCEVA, not exceeding 300 mg may be considered, while monitoring the patient's safety. However, efficacy and long-term safety (> 14 days) of a dose higher than the recommended starting doses have not been established in patients who continue to smoke cigarettes. If the TARCEVA dose is adjusted upward, the dose should be reduced immediately to the indicated starting dose upon cessation of smoking [see *Clinical Pharmacology* (12.3)].

Erlotinib is eliminated by hepatic metabolism and biliary excretion. Although erlotinib exposure was similar in patients with moderately impaired hepatic function (Child-Pugh B), patients with hepatic impairment (total bilirubin > ULN or Child-Pugh A, B and C) should be closely monitored during therapy with TARCEVA [see *Warnings and Precautions* (5.4)]. Treatment with TARCEVA should be used with extra caution in patients with total bilirubin > 3 x ULN. TARCEVA dosing should be interrupted or discontinued if changes in liver function are severe such as doubling of total bilirubin and/or tripling of transaminases in the setting of pretreatment values outside normal range. In the setting of worsening liver function tests, before they become severe, dose interruption and/or dose reduction with frequent liver function test monitoring should be considered. TARCEVA dosing should be interrupted or discontinued if total bilirubin is >3 x ULN and/or transaminases are >5 x ULN in the setting of normal pretreatment values [see *Warnings and Precautions* (5.3, 5.4), *Adverse Reactions* (6.1, 6.2) and *Use in Specific Populations* (8.8)].

### 3 DOSAGE FORMS AND STRENGTHS

25 mg tablets

White film-coated tablets for daily oral administration. Round, biconvex face and straight sides, white film-coated, printed in orange with a "T" and "25" on one side and plain on the other side.

100 mg tablets

White film-coated tablets for daily oral administration. Round, biconvex face and straight sides, white film-coated, printed in gray with "T" and "100" on one side and plain on the other side.

150 mg tablets

White film-coated tablets for daily oral administration. Round, biconvex face and straight sides, white film-coated, printed in maroon with "T" and "150" on one side and plain on the other side.

### 4 CONTRAINDICATIONS

None

### 5 WARNINGS AND PRECAUTIONS

#### 5.1 Pulmonary Toxicity

There have been reports of serious Interstitial Lung Disease (ILD)-like events, including fatalities, in patients receiving TARCEVA for treatment of NSCLC, pancreatic cancer or other advanced solid tumors. In the randomized single-agent NSCLC-studies [see *Clinical Studies* (14.1, 14.2)], the incidence of serious ILD-like events in the TARCEVA treated patients versus placebo treated patients was 0.7% versus 0% in the maintenance study and 0.8% for both groups in the 2<sup>nd</sup> and 3<sup>rd</sup> line study. In the pancreatic cancer study – in combination with gemcitabine – [see *Clinical Studies* (14.4)], the incidence of ILD-like events was 2.5% in the TARCEVA plus gemcitabine group vs. 0.4% in the placebo plus gemcitabine group. The overall incidence of ILD-like events in approximately 32,000 TARCEVA-treated patients from all studies (including uncontrolled studies and studies with concurrent chemotherapy) was approximately 1.1%.

Reported diagnoses in patients suspected of having ILD-like events included pneumonitis, radiation pneumonitis, hypersensitivity pneumonitis, interstitial pneumonia, interstitial lung disease, obliterative bronchiolitis, pulmonary fibrosis, Acute Respiratory Distress Syndrome and lung infiltration. Symptoms started from 5 days to more than 9 months (median 39 days) after initiating TARCEVA therapy. In the lung cancer trials most of the cases were associated with confounding or contributing factors such as concomitant/prior chemotherapy, prior radiotherapy, pre-existing parenchymal lung disease, metastatic lung disease, or pulmonary infections.

In the event of an acute onset of new or progressive unexplained pulmonary symptoms such as dyspnea, cough, and fever, TARCEVA therapy should be interrupted pending diagnostic evaluation. If ILD is diagnosed, TARCEVA should be discontinued and appropriate treatment instituted as needed [see *Dosage and Administration* (2.3)].

#### 5.2 Renal Failure

Cases of hepatorenal syndrome, acute renal failure (including fatalities), and renal insufficiency have been reported. Some were secondary to baseline hepatic impairment while others were associated with severe dehydration due to diarrhea, vomiting, and/or anorexia or concurrent chemotherapy use. In the event of dehydration, particularly in patients with contributing risk factors for renal failure (eg, pre-existing renal disease, medical conditions or medications that may lead to renal disease, or other predisposing conditions including advanced age), TARCEVA therapy should be interrupted and appropriate measures should be taken to intensively rehydrate the patient. Periodic monitoring of renal function and serum electrolytes is recommended in patients at risk of dehydration [see *Adverse Reactions* (6.1) and *Dosage and Administration* (2.3)].

#### 5.3 Hepatotoxicity

Cases of hepatic failure and hepatorenal syndrome (including fatalities) have been reported during use of TARCEVA, particularly in patients with baseline hepatic impairment. Therefore, periodic liver function testing (transaminases, bilirubin, and alkaline phosphatase) is recommended. In the setting of worsening liver function tests, dose interruption and/or dose reduction with frequent liver function test monitoring should be considered. TARCEVA dosing should be interrupted or discontinued if total bilirubin is >3 x ULN and/or transaminases are >5 x ULN in the setting of normal pretreatment values [see *Adverse Reactions* (6.1, 6.2) and *Dosage and Administration* (2.3)].

#### 5.4 Patients with Hepatic Impairment

In a pharmacokinetic study in patients with moderate hepatic impairment (Child-Pugh B) associated with significant liver tumor burden, 10 out of 15 patients died on treatment or within 30 days of the last TARCEVA dose. One patient died from hepatorenal syndrome, 1 patient died from rapidly progressing liver failure and the remaining 8 patients died from progressive disease. Six out of the 10 patients who died had baseline total bilirubin > 3 x ULN suggesting severe hepatic impairment. Treatment with TARCEVA should be used with extra caution in patients with total bilirubin > 3 x ULN. Patients with hepatic impairment (total bilirubin > ULN or Child-Pugh A, B and C) should be closely monitored during therapy with TARCEVA. TARCEVA dosing should be interrupted or discontinued if changes in liver function are severe such as doubling of total bilirubin and/or tripling of transaminases in the setting of pretreatment values outside normal range [see *Clinical Pharmacology* (12.3) and *Dosage and Administration* (2.3)].

#### 5.5 Gastrointestinal Perforation

Gastrointestinal perforation (including fatalities) have been reported in patients receiving TARCEVA. Patients receiving concomitant anti-angiogenic agents, corticosteroids, NSAIDs, and/or taxane-based chemotherapy, or who have prior history of peptic ulceration or diverticular disease are at increased risk. [see *Adverse Reactions* (6.1, 6.2)]. Permanently discontinue TARCEVA in patients who develop gastrointestinal perforation.

#### 5.6 Bullous and Exfoliative Skin Disorders

Bullous, blistering and exfoliative skin conditions have been reported including cases suggestive of Stevens-Johnson syndrome/Toxic epidermal necrolysis, which in some cases were fatal [see *Adverse Reactions* (6.1, 6.2)]. Interrupt or discontinue TARCEVA treatment if the patient develops severe bullous, blistering or exfoliating conditions.

#### 5.7 Myocardial Infarction/Ischemia

In the pancreatic carcinoma trial, six patients (incidence of 2.3%) in the TARCEVA/gemcitabine group developed myocardial infarction/ischemia. One of these patients died due to myocardial infarction. In comparison, 3 patients in the placebo/gemcitabine group developed myocardial infarction (incidence 1.2%) and one died due to myocardial infarction.

#### 5.8 Cerebrovascular Accident

In the pancreatic carcinoma trial, six patients in the TARCEVA/gemcitabine group developed cerebrovascular accidents (incidence: 2.3%). One of these was hemorrhagic and was the only fatal event. In comparison, in the placebo/gemcitabine group there were no cerebrovascular accidents.

#### 5.9 Microangiopathic Hemolytic Anemia with Thrombocytopenia

In the pancreatic carcinoma trial, two patients in the TARCEVA/gemcitabine group developed microangiopathic hemolytic anemia with thrombocytopenia (incidence: 0.8%). Both patients received TARCEVA and gemcitabine concurrently. In comparison, in the placebo/gemcitabine group there were no cases of microangiopathic hemolytic anemia with thrombocytopenia.

#### 5.10 Ocular Disorders

Corneal perforation or ulceration have been reported during use of TARCEVA. Other ocular disorders including abnormal eyelash growth, keratoconjunctivitis sicca or keratitis have been observed with TARCEVA treatment and are known risk factors for corneal ulceration/perforation [see *Adverse Reactions* (6.1)]. Interrupt or discontinue TARCEVA therapy if patients present with acute/worsening ocular disorders such as eye pain.

#### 5.11 Elevated International Normalized Ratio and Potential Bleeding

International Normalized Ratio (INR) elevations and infrequent reports of bleeding events, including gastrointestinal and non-gastrointestinal bleeding, have been reported in clinical studies, some associated with concomitant warfarin administration. Patients taking warfarin or other coumarin-derivative anticoagulants should be monitored regularly for changes in prothrombin time or INR [see *Adverse Reactions* (6.1)].

#### 5.12 Use in Pregnancy

TARCEVA can cause fetal harm when administered to a pregnant woman. Erlotinib administered to rabbits during organogenesis at doses that result in plasma drug concentrations of approximately 3 times those in humans at the recommended dose of 150 mg daily, was associated with embryofetal lethality and abortion. When erlotinib was administered to female rats prior to mating and through the first week of pregnancy, at doses 0.3 or 0.7 times the clinical dose of 150 mg, on a mg/m<sup>2</sup> basis, there was an increase in early resorptions that resulted in a decrease in the number of live fetuses [see *Use in Specific Populations* (8.1)].

There are no adequate and well-controlled studies in pregnant women using TARCEVA. Women of childbearing potential should be advised to avoid pregnancy while on TARCEVA. Adequate contraceptive methods should be used during therapy, and for at least 2 weeks after completing therapy. If TARCEVA is used during pregnancy, or if the patient becomes pregnant while taking this drug, the patient should be apprised of the potential hazard to a fetus.

### 6 ADVERSE REACTIONS

Because clinical trials are conducted under widely varying conditions, adverse reactions rates observed in the clinical trials of a drug cannot be directly compared to rates in the clinical trials of another drug and may not reflect the rates observed in practice.

Safety evaluation of TARCEVA is based on more than 1200 cancer patients who received TARCEVA as monotherapy, more than 300 patients who received TARCEVA 100 or 150 mg plus gemcitabine, and 1228 patients who received TARCEVA concurrently with other chemotherapies.

There have been reports of serious events, including fatalities, in patients receiving TARCEVA for treatment of NSCLC, pancreatic cancer or other advanced solid tumors [see *Warnings and Precautions* (5) and *Dosage and Administration* (2.3)].

#### 6.1 Clinical Trial Experience

##### Non-Small Cell Lung Cancer

##### Maintenance Study

Adverse reactions, regardless of causality, that occurred in at least 3% of patients treated with single-agent TARCEVA at 150 mg and at least 3% more often than in the placebo group in the randomized maintenance trial are summarized by NCI-CTC (version 3.0) Grade in Table 1.

The most common adverse reactions in patients receiving single-agent TARCEVA 150 mg were rash and diarrhea. Grade 3/4 rash and diarrhea occurred in 6.0% and 1.8%, respectively, in TARCEVA-treated patients. Rash and diarrhea resulted in study discontinuation in 1.2% and 0.5% of TARCEVA-treated patients, respectively. Dose reduction or interruption for rash and diarrhea was needed in 5.1% and 2.8% of patients, respectively. In TARCEVA-treated patients who developed rash, the onset was within two weeks in 66% and within one month in 81%.

##### Table 1: NSCLC Maintenance Study: Adverse Reactions Occurring More Frequently (≥ 3%) in the Single-Agent TARCEVA Group than in the Placebo Group and in ≥ 3% of Patients in the TARCEVA Group.

NCI-CTC Grade	TARCEVA N = 433			PLACEBO N = 445		
	Any Grade	Grade 3	Grade 4	Any Grade	Grade 3	Grade 4
<b>MedDRA Preferred Term</b>	%	%	%	%	%	%
Rash	49.2	6.0	0	5.8	0	0
Diarrhea	20.3	1.8	0	4.5	0	0
Fatigue	9.0	1.8	0	5.8	1.1	0
Anorexia	9.2	<1	0	4.9	<1	0
Pruritus	7.4	<1	0	2.7	0	0
Acne	6.2	<1	0	0	0	0
Dermatitis Acneiform	4.6	<1	0	1.1	0	0
Dry Skin	4.4	0	0	<1	0	0
Weight Decreased	3.9	<1	0	<1	0	0
Paronychia	3.9	<1	0	0	0	0

Liver function test abnormalities (including elevated alanine aminotransferase (ALT), aspartate aminotransferase (AST) and bilirubin) were observed in patients receiving single-agent TARCEVA 150 mg in the Maintenance study. Grade 2 (>2.5 – 5.0 x ULN) ALT elevations occurred in 2% and 1%, and Grade 3 (>5.0 – 20.0 x ULN) ALT elevations were observed in 1% and 0% of TARCEVA and placebo treated patients, respectively. The TARCEVA treatment group had Grade 2 (>1.5-3.0 x ULN) bilirubin elevations in 4% and Grade 3 (>3.0-10.0 x ULN) in <1% compared with <1% for both Grades 2 and 3 in the placebo group. TARCEVA dosing should be interrupted or discontinued if changes in liver function are severe [see *Dosage and Administration* (2.3)].

##### Second/Third Line Study

Adverse reactions, regardless of causality, that occurred in at least 10% of patients treated with single-agent TARCEVA at 150 mg and at least 3% more often than in the placebo group in the randomized trial of patients with NSCLC are summarized by NCI-CTC (version 2.0) Grade in Table 2.

The most common adverse reactions in this patient population were rash and diarrhea. Grade 3/4 rash and diarrhea occurred in 9% and 6%, respectively, in TARCEVA-treated patients. Rash and diarrhea each resulted in study discontinuation in 1% of TARCEVA-treated patients. Six percent and 1% of patients needed dose reduction for rash and diarrhea, respectively. The median time to onset of rash was 8 days, and the median time to onset of diarrhea was 12 days.

**Table 2: NSCLC 2<sup>nd</sup>/3<sup>rd</sup> Line Study: Adverse Reactions Occurring More Frequently (≥ 3%) in the Single-agent TARCEVA 150 mg Group than in the Placebo Group and in ≥10% of Patients in the TARCEVA Group.**

NCI-CTC Grade	TARCEVA 150 mg N = 485			Placebo N = 242		
	Any Grade	Grade 3	Grade 4	Any Grade	Grade 3	Grade 4
<b>MedDRA Preferred Term</b>	<b>%</b>	<b>%</b>	<b>%</b>	<b>%</b>	<b>%</b>	<b>%</b>
Rash	75	8	<1	17	0	0
Diarrhea	54	6	<1	18	<1	0
Anorexia	52	8	1	38	5	<1
Fatigue	52	14	4	45	16	4
Dyspnea	41	17	11	35	15	11
Cough	33	4	0	29	2	0
Nausea	33	3	0	24	2	0
Infection	24	4	0	15	2	0
Vomiting	23	2	<1	19	2	0
Stomatitis	17	<1	0	3	0	0
Pruritus	13	<1	0	5	0	0
Dry skin	12	0	0	4	0	0
Conjunctivitis	12	<1	0	2	<1	0
Keratoconjunctivitis sicca	12	0	0	3	0	0
Abdominal pain	11	2	<1	7	1	<1

Liver function test abnormalities (including elevated alanine aminotransferase (ALT), aspartate aminotransferase (AST) and bilirubin) were observed in patients receiving single-agent TARCEVA 150 mg. These elevations were mainly transient or associated with liver metastases. Grade 2 (>2.5 – 5.0 x ULN) ALT elevations occurred in 4% and <1% of TARCEVA and placebo treated patients, respectively. Grade 3 (>5.0 – 20.0 x ULN) elevations were not observed in TARCEVA-treated patients. TARCEVA dosing should be interrupted or discontinued if changes in liver function are severe [see *Dosage and Administration* (2.3)].

### Pancreatic Cancer

Adverse reactions, regardless of causality, that occurred in at least 10% of patients treated with TARCEVA 100 mg plus gemcitabine in the randomized trial of patients with pancreatic cancer are summarized by NCI-CTC (version 2.0) Grade in Table 3.

The most common adverse reactions in pancreatic cancer patients receiving TARCEVA 100 mg plus gemcitabine were fatigue, rash, nausea, anorexia and diarrhea. In the TARCEVA plus gemcitabine arm, Grade 3/4 rash and diarrhea were each reported in 5% of TARCEVA plus gemcitabine-treated patients. The median time to onset of rash and diarrhea was 10 days and 15 days, respectively. Rash and diarrhea each resulted in dose reductions in 2% of patients, and resulted in study discontinuation in up to 1% of patients receiving TARCEVA plus gemcitabine. The 150 mg cohort was associated with a higher rate of certain class-specific adverse reactions including rash and required more frequent dose reduction or interruption.

**Table 3: Adverse Reactions Occurring in ≥ 10% of TARCEVA-treated Pancreatic Cancer Patients: 100 mg cohort**

NCI-CTC Grade	TARCEVA + Gemcitabine 1000 mg/m <sup>2</sup> IV N=259			Placebo + Gemcitabine 1000 mg/m <sup>2</sup> IV N=256		
	Any Grade	Grade 3	Grade 4	Any Grade	Grade 3	Grade 4
<b>MedDRA Preferred Term</b>	<b>%</b>	<b>%</b>	<b>%</b>	<b>%</b>	<b>%</b>	<b>%</b>
Fatigue	73	14	2	70	13	2
Rash	69	5	0	30	1	0
Nausea	60	7	0	58	7	0
Anorexia	52	6	<1	52	5	<1
Diarrhea	48	5	<1	36	2	0
Abdominal pain	46	9	<1	45	12	<1
Vomiting	42	7	<1	41	4	<1
Weight decreased	39	2	0	29	<1	0
Infection*	39	13	3	30	9	2
Edema	37	3	<1	36	2	<1
Pyrexia	36	3	0	30	4	0
Constipation	31	3	1	34	5	1
Bone pain	25	4	<1	23	2	0
Dyspnea	24	5	<1	23	5	0
Stomatitis	22	<1	0	12	0	0
Myalgia	21	1	0	20	<1	0
Depression	19	2	0	14	<1	0
Dyspepsia	17	<1	0	13	<1	0
Cough	16	0	0	11	0	0
Dizziness	15	<1	0	13	0	<1
Headache	15	<1	0	10	0	0
Insomnia	15	<1	0	16	<1	0
Alopecia	14	0	0	11	0	0
Anxiety	13	1	0	11	<1	0
Neuropathy	13	1	<1	10	<1	0
Flatulence	13	0	0	9	<1	0
Rigors	12	0	0	9	0	0

\*Includes all MedDRA preferred terms in the Infections and Infestations System Organ Class

In the pancreatic carcinoma trial, 10 patients in the TARCEVA/gemcitabine group developed deep venous thrombosis (incidence: 3.9%). In comparison, 3 patients in the placebo/gemcitabine group developed deep venous thrombosis (incidence 1.2%). The overall incidence of grade 3 or 4 thrombotic events, including deep venous thrombosis, was similar in the two treatment arms: 11% for TARCEVA plus gemcitabine and 9% for placebo plus gemcitabine.

No differences in Grade 3 or Grade 4 hematologic laboratory toxicities were detected between the TARCEVA plus gemcitabine group compared to the placebo plus gemcitabine group.

Severe adverse reactions (≥grade 3 NCI-CTC) in the TARCEVA plus gemcitabine group with incidences <5% included syncope, arrhythmias, ileus, pancreatitis, hemolytic anemia including microangiopathic hemolytic anemia with thrombocytopenia, myocardial infarction/ischemia, cerebrovascular accidents including cerebral hemorrhage, and renal insufficiency [see *Warnings and Precautions* (5)].

Liver function test abnormalities (including elevated alanine aminotransferase (ALT), aspartate aminotransferase (AST) and bilirubin) have been observed following the administration of TARCEVA plus gemcitabine in patients with pancreatic cancer. Table 4 displays the most severe NCI-CTC grade of liver function abnormalities that developed. TARCEVA dosing should be interrupted or discontinued if changes in liver function are severe [see *Dosage and Administration* (2.3)].

**Table 4: Liver Function Test Abnormalities (most severe NCI-CTC grade) in Pancreatic Cancer Patients: 100 mg Cohort**

NCI-CTC Grade	TARCEVA + Gemcitabine 1000 mg/m <sup>2</sup> IV N = 259			Placebo + Gemcitabine 1000 mg/m <sup>2</sup> IV N = 256		
	Grade 2	Grade 3	Grade 4	Grade 2	Grade 3	Grade 4
Bilirubin	17%	10%	<1%	11%	10%	3%
ALT	31%	13%	<1%	22%	9%	0%
AST	24%	10%	<1%	19%	9%	0%

## NSCLC and Pancreatic Indications: Low Frequency Adverse Reactions Gastrointestinal Disorders

Gastrointestinal perforations have been reported [see *Warnings and Precautions* (5.5)].

During the NSCLC and the combination pancreatic cancer trials, infrequent cases of gastrointestinal bleeding have been reported, some associated with concomitant warfarin or NSAID administration [see *Warnings and Precautions* (5.11)]. These adverse reactions were reported as peptic ulcer bleeding (gastritis, gastroduodenal ulcers), hematemesis, hematochezia, melena and hemorrhage from possible colitis.

## Renal Disorders

Cases of acute renal failure or renal insufficiency, including fatalities, with or without hypokalemia have been reported [see *Warnings and Precautions* (5.2)].

## Hepatic Disorders

Hepatic failure has been reported in patients treated with single-agent TARCEVA or TARCEVA combined with chemotherapy [see *Warnings and Precautions* (5.3)].

## Ocular Disorders

Corneal ulcerations or perforations have been reported in patients receiving TARCEVA treatment. Abnormal eyelash growth including in-growing eyelashes, excessive growth and thickening of the eyelashes have been reported [see *Warnings and Precautions* (5.10)] and are risk factors for corneal ulceration/perforation.

NCI-CTC Grade 3 conjunctivitis and keratitis have been reported infrequently in patients receiving TARCEVA therapy in the NSCLC and pancreatic cancer clinical trials. [see *Patient Counseling Information* (17)].

## Skin, Hair, and Nail Disorders

Bullous, blistering and exfoliative skin conditions have been reported including cases suggestive of Stevens-Johnson syndrome/Toxic epidermal necrolysis [see *Warnings and Precautions* (5.6)].

In patients who develop skin rash, the appearance of the rash is typically erythematous and maculopapular and it may resemble acne with follicular pustules, but is histopathologically different. This skin reaction commonly occurs on the face, upper chest and back, but may be more generalized or severe (NCI-CTC Grade 3 or 4) with desquamation. Skin reactions may occur or worsen in sun exposed areas; therefore, the use of sunscreen or avoidance of sun exposure is recommended. Associated symptoms may include itching, tenderness and/or burning. Also, hyperpigmentation or dry skin with or without digital skin fissures may occur.

Hair and nail disorders including alopecia, hirsutism, eyelash/eyebrow (see above) changes, paronychia and brittle and loose nails have been reported.

## Other Disorders

Epistaxis was also reported in both the single-agent NSCLC and the pancreatic cancer clinical trials.

In general, no notable differences in the safety of TARCEVA monotherapy or in combination with gemcitabine could be discerned between females or males and between patients younger or older than the age of 65 years [see *Use in Specific Populations* (8.5 and 8.6)]. The safety of TARCEVA appears similar in Caucasian and Asian patients.

## 6.2 Post-marketing Experience

The following adverse reactions have been identified during post approval use of TARCEVA. Because these reactions are reported voluntarily from a population of uncertain size, it is not always possible to reliably estimate their frequency or establish a causal relationship to drug exposure.

## Skin and subcutaneous tissue disorders

Hair and nail changes, mostly non-serious e.g. hirsutism, eyelash/eyebrow changes, paronychia and brittle and loose nails. Bullous, blistering and exfoliative skin conditions have been reported including cases suggestive of Stevens-Johnson syndrome/Toxic epidermal necrolysis [see *Warnings and Precautions* (5.6)].

## Gastrointestinal Disorders

Gastrointestinal perforations [see *Warnings and Precautions* (5.5)].

## Hepatic Disorders

Hepatic failure has been reported in patients treated with single-agent TARCEVA or TARCEVA combined with chemotherapy [see *Warnings and Precautions* (5.3)].

## 7 DRUG INTERACTIONS

Erlotinib is metabolized predominantly by CYP3A4, and inhibitors of CYP3A4 would be expected to increase exposure. Co-treatment with the potent CYP3A4 inhibitor ketoconazole increased erlotinib AUC by 2/3. When TARCEVA was co-administered with ciprofloxacin, an inhibitor of both CYP3A4 and CYP1A2, the erlotinib exposure [AUC] and maximum concentration [C<sub>max</sub>] increased by 39% and 17% respectively. Caution should be used when administering or taking TARCEVA with ketoconazole and other strong CYP3A4 inhibitors such as, but not limited to, atazanavir, clarithromycin, indinavir, itraconazole, nefazodone, nelfinavir, ritonavir, saquinavir, telithromycin, troleanandomycin (TAO), voriconazole and grapefruit or grapefruit juice [see *Dosage and Administration* (2.3)].

Pre-treatment with the CYP3A4 inducer rifampicin for 7 days prior to TARCEVA decreased erlotinib AUC by about 2/3 to 4/5, which is equivalent to a dose of about 30 to 50 mg in NSCLC patients. In a separate study, treatment with rifampicin for 11 days, with co-administration of a single 450 mg dose of TARCEVA on day 8 resulted in a mean erlotinib exposure (AUC) that was 57.6% of that observed following a single 150 mg TARCEVA dose in the absence of rifampicin treatment [see *Dose Modifications* (2.3)]. Use of alternative treatments lacking CYP3A4 inducing activity is strongly recommended. If an alternative treatment is unavailable, adjusting the starting dose should be considered. If the TARCEVA dose is adjusted upward, the dose will need to be reduced immediately to the indicated starting dose upon discontinuation of rifampicin or other inducers. Other CYP3A4 inducers include, but are not limited to, rifabutin, rifampentine, phenytoin, carbamazepine, phenobarbital and St. John's Wort [see *Dosage and Administration* (2.3)].

Cigarette smoking has been shown to reduce erlotinib AUC. Patients should be advised to stop smoking; however, if they continue to smoke, a cautious increase in the dose of TARCEVA may be considered, while monitoring the patient's safety. If the TARCEVA dose is adjusted upward, the dose should be reduced immediately to the indicated starting dose upon cessation of smoking [see *Dosage and Administration* (2.3) and *Clinical Pharmacology* (12.3)].

Pretreatment and co-administration of TARCEVA decreased the AUC of CYP3A4 substrate, midazolam, by 24%. The mechanism is not clear.

In a study, there were no significant effects of gemcitabine on the pharmacokinetics of erlotinib nor were there significant effects of erlotinib on the pharmacokinetics of gemcitabine.

Drugs that alter the pH of the upper GI tract may alter the solubility of erlotinib and reduce its bioavailability. Increasing the dose of TARCEVA when co-administered with such agents is not likely to compensate for the loss of exposure. Co-administration of TARCEVA with omeprazole, a proton pump inhibitor, decreased the erlotinib AUC by 46%. Since proton pump inhibitors affect pH of the upper GI tract for an extended period, separation of doses may not eliminate the interaction. The concomitant use of proton pump inhibitors with TARCEVA should be avoided if possible. Co-administration of TARCEVA with 300 mg ranitidine, an H<sub>2</sub> receptor antagonist, decreased erlotinib AUC by 33%. When TARCEVA was administered with ranitidine 150 mg twice daily (at least 10 h after the previous ranitidine evening dose and 2 h before the ranitidine morning dose), the erlotinib AUC decreased by 15%. If patients need to be treated with an H<sub>2</sub>-receptor antagonist such as ranitidine, it should be used in a staggered manner. TARCEVA must be taken once a day, 10 hours after the H<sub>2</sub>-receptor antagonist dosing and at least 2 hours before the next dose of H<sub>2</sub>-receptor antagonist. Although the effect of antacids on erlotinib pharmacokinetics has not been evaluated, the antacid dose and the TARCEVA dose should be separated by several hours, if an antacid is necessary. [see *Clinical Pharmacology* (12.3)].

## 8 USE IN SPECIFIC POPULATIONS

### 8.1 Pregnancy

Pregnancy Category D [see *Warnings and Precautions* section]

TARCEVA can cause fetal harm when administered to a pregnant woman. Women of childbearing potential should be advised not to become pregnant while being treated with TARCEVA.

Erlotinib has been shown to cause maternal toxicity with associated embryofetal lethality and abortion in rabbits when given at doses that result in plasma drug concentrations of approximately 3 times those in humans (AUCs at 150 mg daily dose). When given during the period of organogenesis to achieve plasma drug concentrations approximately equal to those in humans, based on AUC, there was no increased incidence of embryofetal lethality or abortion in rabbits or rats. However, female rats treated with 30 mg/m<sup>2</sup>/day or 60 mg/m<sup>2</sup>/day (0.3 or 0.7 times the clinical dose, on a mg/m<sup>2</sup> basis) of erlotinib prior to mating through the first week of pregnancy had an increase in early resorptions that resulted in a decrease in the number of live fetuses.

No teratogenic effects were observed in rabbits or rats dosed with erlotinib during organogenesis at doses up to 600 mg/m<sup>2</sup>/day in the rabbit (3 times the plasma drug concentration seen in humans at 150 mg/day) and up to 60 mg/m<sup>2</sup>/day in the rat (0.7 times the clinical dose of 150 mg/day on a mg/m<sup>2</sup> basis).

### 8.3 Nursing Mothers

It is not known whether erlotinib is excreted in human milk. Because many drugs are excreted in human milk and because of the potential for serious adverse reactions in nursing infants from TARCEVA, a decision should be made whether to discontinue nursing or discontinue the drug, taking into account the importance of the drug to the mother.

### 8.4 Pediatric Use

The safety and effectiveness of TARCEVA in pediatric patients have not been established.

### 8.5 Geriatric Use

#### Maintenance Study

Of the total number of patients participating in the randomized NSCLC Maintenance trial, 66% were less than 65 years of age, and 34% of patients were aged 65 years or older. The hazard ratio for overall survival was 0.78 (95% CI: 0.65, 0.95) in patients less than 65 years of age and 0.88 (95% CI: 0.68, 1.15) in patients who were 65 years or older.

#### Second/Third Line Study

Of the total number of patients participating in the randomized 2<sup>nd</sup>/3<sup>rd</sup> line NSCLC trial, 61% were less than 65 years of age, and 39% of patients were aged 65 years or older. The survival benefit was maintained across both age groups [OS HR = 0.75 (95% CI: 0.6, 0.9) in patients less than 65 years of age, and OS HR = 0.79 (95% CI: 0.6, 1.0) in patients who were 65 years or older].

#### First-Line Pancreatic Cancer

In the pancreatic cancer study, 52% of patients were younger than 65 years of age and 48% were 65 years of age or older. There were no clinically relevant survival differences between the age groups [OS HR = 0.78 (95% CI: 0.6, 1.0) in patients less than 65 years of age, and OS HR = 0.94 (95% CI: 0.7, 1.2) in patients who were 65 years or older]. No meaningful differences in safety or pharmacokinetics were observed between younger and older patients in these studies. Therefore, no dosage adjustments are recommended in elderly patients.

### 8.6 Gender

#### Maintenance Study

Of the total number of patients participating in the randomized Maintenance trial, 73% were males and 27% females. There were no clinically relevant differences in safety and efficacy based on gender [OS HR = 0.88 (95% CI: 0.74, 1.05) in males and OS HR = 0.64 (95% CI: 0.46, 0.91) in females].

#### Second/Third Line Study

Of the total number of patients participating in the randomized 2<sup>nd</sup>/3<sup>rd</sup> line NSCLC trial, 65% were males and 35% females. There were no clinically relevant differences in safety and efficacy based on gender [OS HR = 0.76 (95% CI: 0.6, 0.9) in males and OS HR = 0.80 (95% CI: 0.6, 1.1) in females].

#### First Line Pancreatic Cancer

In the pancreatic cancer study, 51% of patients were males and 49% females. There were no clinically relevant differences in safety and efficacy based on gender [OS HR = 0.74 (95% CI: 0.6, 0.9) in males and OS HR = 1.0 (95% CI: 0.8, 1.3) in females].

### 8.7 Race

#### Maintenance Study

In the randomized Maintenance trial, 84% of all patients were Caucasian and 15% were Asian. There were no clinically relevant differences in safety and efficacy based on race [OS HR = 0.86 (95% CI: 0.73, 1.01) in Caucasians and OS HR = 0.66 (95% CI: 0.42, 1.05) in Asians].

#### Second/Third Line Study

In the randomized 2<sup>nd</sup>/3<sup>rd</sup> line NSCLC trial, 78% of all patients were Caucasian and 13% were Asian. There were no clinically relevant differences in safety and efficacy based on race [OS HR = 0.79 (95% CI: 0.6, 1.0) in Caucasians and OS HR = 0.61 (95% CI: 0.4, 1.0) in Asians].

#### First-Line Pancreatic Cancer

In the pancreatic cancer study, 86% of all patients were Caucasian and 8% were Asian. There were no clinically relevant differences in safety and efficacy based on race [OS HR = 0.88 (95% CI: 0.7, 1.1) in Caucasians and OS HR = 0.61 (95% CI: 0.3, 1.3) in Asians].

### 8.8 Patients with Hepatic Impairment

Patients with hepatic impairment (total bilirubin > ULN or Child Pugh A, B and C) should be closely monitored during therapy with TARCEVA. Treatment with TARCEVA should be used with extra caution in patients with total bilirubin > 3 x ULN [see *Warnings (5.4), Adverse Reactions (6.1, 6.2), and Dosage and Administration (2.3)*].

*In vitro* and *in vivo* evidence suggest that erlotinib is cleared primarily by the liver. However, erlotinib exposure was similar in patients with moderately impaired hepatic function (Child-Pugh B) compared with patients with adequate hepatic function including patients with primary liver cancer or hepatic metastases [see *Dosage and Administration (2.3) and Clinical Pharmacology (12.3)*].

### 8.9 Patients with Renal Impairment

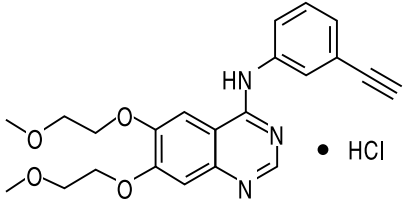
Less than 9% of a single dose is excreted in the urine. No clinical studies have been conducted in patients with compromised renal function.

## 10 OVERDOSAGE

Single oral doses of TARCEVA up to 1,000 mg in healthy subjects and weekly doses up to 1,600 mg in cancer patients have been tolerated. Repeated twice-daily doses of 200 mg single-agent TARCEVA in healthy subjects were poorly tolerated after only a few days of dosing. Based on the data from these studies, an unacceptable incidence of severe adverse reactions, such as diarrhea, rash, and liver transaminase elevation, may occur above the recommended dose [see *Dosage and Administration (2)*]. In case of suspected overdose, TARCEVA should be withheld and symptomatic treatment instituted.

## 11 DESCRIPTION

TARCEVA (erlotinib), a kinase inhibitor, is a quinazolinamine with the chemical name N-(3-ethynylphenyl)-6,7-bis(2-methoxyethoxy)-4-quinazolinamine. TARCEVA contains erlotinib as the hydrochloride salt that has the following structural formula:



Erlotinib hydrochloride has the molecular formula C<sub>22</sub>H<sub>23</sub>N<sub>3</sub>O<sub>4</sub>·HCl and a molecular weight of 429.90. The molecule has a pK<sub>a</sub> of 5.42 at 25°C. Erlotinib hydrochloride is very slightly soluble in water, slightly soluble in methanol and practically insoluble in acetonitrile, acetone, ethyl acetate and hexane.

Aqueous solubility of erlotinib hydrochloride is dependent on pH with increased solubility at a pH of less than 5 due to protonation of the secondary amine. Over the pH range of 1.4 to 9.6, maximal solubility of approximately 0.4 mg/mL occurs at a pH of approximately 2.

TARCEVA tablets for oral administration are available in three dosage strengths containing erlotinib hydrochloride (27.3 mg, 109.3 mg and 163.9 mg) equivalent to 25 mg, 100 mg and 150 mg erlotinib and the following inactive ingredients: lactose monohydrate, hypromellose, hydroxypropyl cellulose, magnesium stearate, microcrystalline cellulose, sodium starch glycolate, sodium lauryl sulfate and titanium dioxide. The tablets also contain trace amounts of color additives, including FD&C Yellow #6 (25 mg only) for product identification.

## 12 CLINICAL PHARMACOLOGY

### 12.1 Mechanism of Action

The mechanism of clinical antitumor action of erlotinib is not fully characterized. Erlotinib inhibits the intracellular phosphorylation of tyrosine kinase associated with the epidermal growth factor receptor (EGFR). Specificity of inhibition with regard to other tyrosine kinase receptors has not been fully characterized. EGFR is expressed on the cell surface of normal cells and cancer cells.

### 12.3 Pharmacokinetics

#### Absorption and Distribution:

Erlotinib is about 60% absorbed after oral administration and its bioavailability is substantially increased by food to almost 100%. Peak plasma levels occur 4 hours after dosing. The solubility of erlotinib is pH dependent. Erlotinib solubility decreases as pH increases. Co-administration of TARCEVA with omeprazole, a proton pump inhibitor, decreased the erlotinib exposure [AUC] and maximum concentration [C<sub>max</sub>] by 46% and 61% respectively. When TARCEVA was administered 2 hours following a 300 mg dose of ranitidine, an H<sub>2</sub> receptor antagonist, the erlotinib AUC was reduced by 33% and C<sub>max</sub> by 54%. When TARCEVA was administered with ranitidine 150 mg twice daily (at least 10 h after the previous ranitidine evening dose and 2 h before the ranitidine morning dose), the erlotinib AUC and C<sub>max</sub> decreased by 15% and 17% respectively [see *Drug Interactions (7)*].

Following absorption, erlotinib is approximately 93% protein bound to plasma albumin and alpha-1 acid glycoprotein (AAG). Erlotinib has an apparent volume of distribution of 232 liters.

#### Metabolism and Excretion:

A population pharmacokinetic analysis in 591 patients receiving the single-agent TARCEVA 2<sup>nd</sup>/3<sup>rd</sup> line regimen showed a median half-life of 36.2 hours. Time to reach steady state plasma concentration would therefore be 7 – 8 days. No significant relationships of clearance to covariates of patient age, body weight or gender were observed. Smokers had a 24% higher rate of erlotinib clearance.

An additional population pharmacokinetic analysis was conducted in 291 NSCLC patients administered single-agent erlotinib as maintenance treatment. This analysis demonstrated that covariates affecting erlotinib clearance in this patient population were similar to those seen in the prior single-agent pharmacokinetic analysis. No new covariate effects were identified.

A third population pharmacokinetic analysis was conducted that incorporated erlotinib data from 204 pancreatic cancer patients who received erlotinib plus gemcitabine. Similar results were observed to those seen in the prior single-agent pharmacokinetic analysis. No new covariate effects were identified. Co-administration of gemcitabine had no effect on erlotinib plasma clearance.

*In vitro* assays of cytochrome P450 metabolism showed that erlotinib is metabolized primarily by CYP3A4 and to a lesser extent by CYP1A2, and the extrahepatic isoform CYP1A1. Following a 100 mg oral dose, 91% of the dose was recovered: 83% in feces (1% of the dose as intact parent) and 8% in urine (0.3% of the dose as intact parent).

Cigarette smoking reduces erlotinib exposure. In the Phase 3 NSCLC trial, current smokers achieved erlotinib steady-state trough plasma concentrations which were approximately 2-fold less than the former smokers or patients who had never smoked. This effect was accompanied by a 24% increase in apparent erlotinib plasma clearance. In a separate study which evaluated the single-dose pharmacokinetics of erlotinib in healthy volunteers, current smokers cleared the drug faster than former smokers or volunteers who had never smoked. The AUC<sub>0-infinity</sub> in smokers was about 1/3 to 1/2 of that in never/former smokers. In another study which was conducted in NSCLC patients (N=35) who were current smokers, pharmacokinetic analyses at steady-state indicated a dose-proportional increase in erlotinib exposure when the TARCEVA dose was increased from 150 mg to 300 mg. However, the exact dose to be recommended for patients who currently smoke is unknown [see *Drug Interactions (7) and Patient Counseling Information (17)*].

#### Special Populations:

##### Patients with Hepatic Impairment

Patients with hepatic impairment (total bilirubin > ULN or Child Pugh A, B and C) should be closely monitored during therapy with TARCEVA. Treatment with TARCEVA should be used with extra caution in patients with total bilirubin > 3 x ULN [see *Warnings and Precautions (5.4), Adverse Reactions (6.1, 6.2), and Dosage and Administration (2.3)*].

*In vitro* and *in vivo* evidence suggest that erlotinib is cleared primarily by the liver. However, erlotinib exposure was similar in patients with moderately impaired hepatic function (Child-Pugh B) compared with patients with adequate hepatic function including patients with primary liver cancer or hepatic metastases.

##### Patients with Renal Impairment

Less than 9% of a single dose is excreted in the urine. No clinical studies have been conducted in patients with compromised renal function.

## 13 NONCLINICAL TOXICOLOGY

### 13.1 Carcinogenesis, Mutagenesis, Impairment of Fertility

Erlotinib has not been tested for carcinogenicity.

Erlotinib has been tested for genotoxicity in a series of *in vitro* assays (bacterial mutation, human lymphocyte chromosome aberration, and mammalian cell mutation) and an *in vivo* mouse bone marrow micronucleus test and did not cause genetic damage.

Erlotinib did not impair fertility in either male or female rats.

## 14 CLINICAL STUDIES

### 14.1 NSCLC – Maintenance Study

The efficacy and safety of TARCEVA as maintenance treatment of NSCLC were demonstrated in a randomized, double-blind, placebo-controlled trial conducted in 26 countries, in 889 patients with locally advanced or metastatic NSCLC whose disease did not progress during first line platinum-based chemotherapy. Patients were randomized 1:1 to receive TARCEVA 150 mg or placebo orally once daily (438 TARCEVA, 451 placebo) until disease progression or unacceptable toxicity. The primary objective of the study was to determine if the administration of TARCEVA after standard platinum-based chemotherapy in the treatment of NSCLC resulted in improved progression free survival (PFS) when compared with placebo, in all patients or in patients with EGFR immunohistochemistry (IHC) positive tumors.

Demographic characteristics were balanced between the two treatment groups (Table 5).

**Table 5: Demographic and Disease Characteristics:**

Characteristics	TARCEVA N=438		PLACEBO N=451	
	N	(%)	N	(%)
<b>Gender</b>				
Female	117	(27%)	113	(25%)
Male	321	(73%)	338	(75%)
<b>Age (years)</b>				
≥65 Years	148	(34%)	151	(33%)
< 65 Years	290	(66%)	300	(67%)
<b>Stage of NSCLC</b>				
Unresectable Stage IIIB	116	(26%)	109	(24%)
Stage IV	322	(74%)	342	(76%)
<b>Race</b>				
Caucasian	370	(84%)	376	(83%)
Black	3	(<1%)	1	(<1%)
Asian	62	(14%)	69	(15%)
Other	3	(<1%)	5	(1%)
<b>ECOG Performance Status at Baseline</b>				
0	135	(31%)	145	(32%)
1	303	(69%)	306	(68%)
<b>EGFR IHC</b>				
Positive	308	(70%)	313	(69%)
Negative	62	(14%)	59	(13%)
Indeterminate	16	(4%)	24	(5%)
Missing	52	(12%)	55	(12%)
<b>Histology</b>				
Squamous	166	(38%)	194	(43%)
Adenocarcinoma including Bronchioloalveolar	205	(47%)	198	(44%)
Large Cell	21	(5%)	24	(5%)
Other	46	(11%)	35	(8%)
<b>Smoking Status</b>				
Current Smoker	239	(55%)	254	(56%)
Never Smoked	77	(18%)	75	(17%)
Past Smoker	122	(28%)	122	(27%)

Smoking status: Current smoker = smoker at time of randomization or stopped within 1 year prior to randomization.  
 Progression free survival (PFS) and overall survival (OS) were evaluated in the intent-to-treat (ITT) population. The results of the study are shown in Table 6.

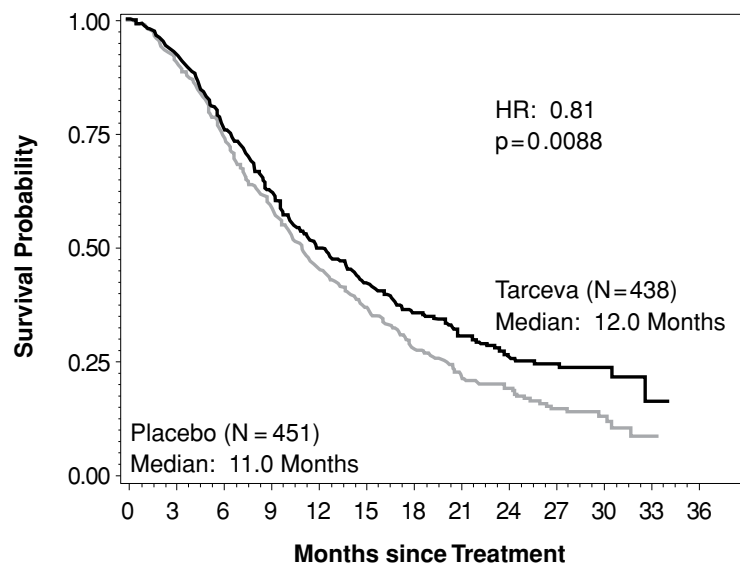
**Table 6: Efficacy Results: (ITT Population)**

	Median in Months (95% CI)		Hazard Ratio (1) (95% CI)	p-value (2)
	TARCEVA 150 mg N = 438	Placebo N=451		
<b>Progression-Free Survival based on investigator's assessment</b>	2.8 (2.8, 3.1)	2.6 (1.9, 2.7)	0.71 (0.62, 0.82)	p < 0.0001
<b>Overall Survival</b>	12.0 (10.6, 13.9)	11.0 (9.9, 12.1)	0.81 (0.70, 0.95)	0.0088

- (1) Univariate Cox regression model
- (2) Unstratified log-rank test.

Figure 1 depicts the Kaplan Meier Curves for Overall Survival (ITT Population).

**Figure 1: Kaplan – Meier Curve for Overall Survival of Patients by Treatment Group**



Note: HR is from a univariate Cox regression model.

The PFS and OS Hazard Ratios, respectively, in patients with EGFR IHC-positive tumors were 0.69 (95% CI: 0.58, 0.82) and 0.77 (95% CI: 0.64, 0.93). The PFS and OS Hazard Ratios in patients with IHC-negative tumors were 0.77 (95% CI: 0.51, 1.14) and 0.91 (95% CI: 0.59, 1.38), respectively. Patients with adenocarcinoma had an OS Hazard Ratio of 0.77 (95% CI: 0.61, 0.97) and patients with squamous histology had an OS Hazard Ratio of 0.86 (95% CI: 0.68, 1.10).

**14.2 NSCLC – Second/Third Line Study**

The efficacy and safety of single-agent TARCEVA was assessed in a randomized, double blind, placebo-controlled trial in 731 patients with locally advanced or metastatic NSCLC after failure of at least one chemotherapy regimen. Patients were randomized 2:1 to receive TARCEVA 150 mg or placebo (488 Tarceva, 243 placebo) orally once daily until disease progression or unacceptable toxicity. Study endpoints included overall survival, response rate, and progression-free survival (PFS). Duration of response was also examined. The primary endpoint was survival. The study was conducted in 17 countries. Table 7 summarizes the demographic and disease characteristics of the study population. Demographic characteristics were well balanced between the two treatment groups. About two-thirds of the patients were male. Approximately one-fourth had a baseline ECOG performance status (PS) of 2, and 9% had a baseline ECOG PS of 3. Fifty percent of the patients had received only one prior regimen of chemotherapy. About three quarters of these patients were known to have smoked at some time.

**Table 7: Demographic and Disease Characteristics**

Characteristics	TARCEVA (N = 488)		Placebo (N = 243)	
	n	(%)	n	(%)
<b>Gender</b>				
Female	173	(35)	83	(34)
Male	315	(65)	160	(66)
<b>Age (years)</b>				
< 65	299	(61)	153	(63)
≥ 65	189	(39)	90	(37)
<b>Race</b>				
Caucasian	379	(78)	188	(77)
Black	18	(4)	12	(5)
Asian	63	(13)	28	(12)
Other	28	(6)	15	(6)
<b>ECOG Performance Status at Baseline*</b>				
0	64	(13)	34	(14)
1	256	(52)	132	(54)
2	126	(26)	56	(23)
3	42	(9)	21	(9)
<b>Weight Loss in Previous 6 Months</b>				
< 5%	320	(66)	166	(68)
5 – 10%	96	(20)	36	(15)
> 10%	52	(11)	29	(12)
Unknown	20	(4)	12	(5)
<b>Smoking History</b>				
Never Smoked	104	(21)	42	(17)
Current or Ex-smoker	358	(73)	187	(77)
Unknown	26	(5)	14	(6)
<b>Histological Classification</b>				
Adenocarcinoma	246	(50)	119	(49)
Squamous	144	(30)	78	(32)
Undifferentiated Large Cell	41	(8)	23	(9)
Mixed Non-Small Cell	11	(2)	2	(<1)
Other	46	(9)	21	(9)
<b>Time from Initial Diagnosis to Randomization (Months)</b>				
< 6	63	(13)	34	(14)
6 – 12	157	(32)	85	(35)
> 12	268	(55)	124	(51)
<b>Best Response to Prior Therapy at Baseline*</b>				
CR/PR	196	(40)	96	(40)
PD	101	(21)	51	(21)
SD	191	(39)	96	(40)
<b>Number of Prior Regimens at Baseline*</b>				
1	243	(50)	121	(50)
2	238	(49)	119	(49)
3	7	(1)	3	(1)
<b>Exposure to Prior Platinum at Baseline*</b>				
Yes	454	(93)	224	(92)
No	34	(7)	19	(8)

\* Stratification factor as documented at baseline; distribution differs slightly from values reported at time of randomization.

The results of the study are shown in Table 8.

**Table 8: Efficacy Results**

	TARCEVA	Placebo	Hazard Ratio (1)	95% CI	p-value
Survival	Median 6.7 mo	Median 4.7 mo	0.73	0.61 – 0.86	<0.001 (2)
1-year Survival	31.2%	21.5%			
Progression-Free Survival	Median 9.9 wk	Median 7.9 wk	0.59	0.50 – 0.70	<0.001 (2)
Tumor Response (CR+PR)	8.9%	0.9%			<0.001 (3)
Response Duration	Median 34.3 wk	Median 15.9 wk			

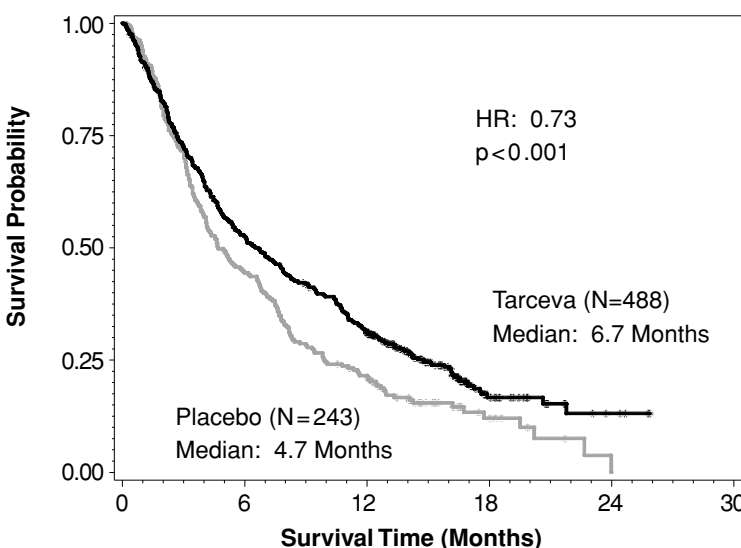
(1) Cox regression model with the following covariates: ECOG performance status, number of prior regimens, prior platinum, best response to prior chemotherapy.

(2) Two-sided Log-Rank test stratified by ECOG performance status, number of prior regimens, prior platinum, best response to prior chemotherapy.

(3) Two-sided Fisher's exact test

Survival was evaluated in the intent-to-treat population. Figure 2 depicts the Kaplan-Meier curves for overall survival. The primary survival and PFS analyses were two-sided Log-Rank tests stratified by ECOG performance status, number of prior regimens, prior platinum, best response to prior chemotherapy.

**Figure 2: Kaplan – Meier Curve for Overall Survival of Patients by Treatment Group**



Note: HR is from Cox regression model with the following covariates: ECOG performance status, number of prior regimens, prior platinum, best response to prior chemotherapy. P-value is from two-sided Log-Rank test stratified by ECOG performance status, number of prior regimens, prior platinum, best response to prior chemotherapy.

### 14.3 NSCLC – TARCEVA Administered Concurrently with Chemotherapy

Results from two, multicenter, placebo-controlled, randomized, trials in over 1000 patients conducted in first-line patients with locally advanced or metastatic NSCLC showed no clinical benefit with the concurrent administration of TARCEVA with platinum-based chemotherapy (carboplatin and paclitaxel (TARCEVA, N = 526) or gemcitabine and cisplatin (TARCEVA, N = 580)).

### 14.4 Pancreatic Cancer – TARCEVA Administered Concurrently with Gemcitabine

The efficacy and safety of TARCEVA in combination with gemcitabine as a first-line treatment was assessed in a randomized, double blind, placebo-controlled trial in 569 patients with locally advanced, unresectable or metastatic pancreatic cancer. Patients were randomized 1:1 to receive TARCEVA (100 mg or 150 mg) or placebo once daily on a continuous schedule plus gemcitabine IV (1000 mg/m<sup>2</sup>, Cycle 1 - Days 1, 8, 15, 22, 29, 36 and 43 of an 8 week cycle; Cycle 2 and subsequent cycles - Days 1, 8 and 15 of a 4 week cycle [the approved dose and schedule for pancreatic cancer, see the gemcitabine package insert]). TARCEVA or placebo was taken orally once daily until disease progression or unacceptable toxicity. The primary endpoint was survival. Secondary endpoints included response rate, and progression-free survival (PFS). Duration of response was also examined. The study was conducted in 18 countries. A total of 285 patients were randomized to receive gemcitabine plus TARCEVA (261 patients in the 100 mg cohort and 24 patients in the 150 mg cohort) and 284 patients were randomized to receive gemcitabine plus placebo (260 patients in the 100 mg cohort and 24 patients in the 150 mg cohort). Too few patients were treated in the 150 mg cohort to draw conclusions.

Table 9 summarizes the demographic and disease characteristics of the study population that was randomized to receive 100 mg of TARCEVA plus gemcitabine or placebo plus gemcitabine. Baseline demographic and disease characteristics of the patients were similar between the 2 treatment groups, except for a slightly larger proportion of females in the TARCEVA arm (51%) compared with the placebo arm (44%). The median time from initial diagnosis to randomization was approximately 1.0 month. Most patients presented with metastatic disease at study entry as the initial manifestation of pancreatic cancer.

**Table 9: Demographic and Disease Characteristics: 100 mg Cohort**

Characteristics	TARCEVA + Gemcitabine (N=261)		Placebo + Gemcitabine (N=260)	
	N	(%)	N	(%)
<b>Gender</b>				
Female	134	(51)	114	(44)
Male	127	(49)	146	(56)
<b>Age (Years)</b>				
<65	136	(52)	138	(53)
≥65	125	(48)	122	(47)
<b>Race</b>				
Caucasian	225	(86)	231	(89)
Black	8	(3)	5	(2)
Asian	20	(8)	14	(5)
Other	8	(3)	10	(3)
<b>ECOG Performance Status*</b>				
0	82	(31)	83	(32)
1	134	(51)	132	(51)
2	44	(17)	45	(17)
Unknown*	1	(<1)	0	(0)
<b>Disease Status at Baseline**</b>				
Locally Advanced	61	(23)	63	(24)
Distant Metastasis	200	(77)	197	(76)

\*Unknown includes responses of 'Unknown' and missing.

\*\*Stratification factor as documented at baseline; distribution differs slightly from values reported at time of randomization.

The results of the study are shown in Table 10.

**Table 10: Efficacy Results: 100 mg Cohort**

	TARCEVA + Gemcitabine	Placebo + Gemcitabine	Hazard Ratio (1)	95% CI	p-value
Survival	Median 6.4 mo 250 deaths	Median 6.0 mo 254 deaths	0.81	0.68 – 0.97	0.028 (2)
1-year Survival	23.8%	19.4%			
Progression-Free Survival	Median 3.8 mo 225 events	Median 3.5 mo 232 events	0.76	0.64 – 0.92	0.006 (2)
Tumor Response (CR+PR)	8.6%	7.9%			0.87 (3)
Response Duration	Median 23.9 wk	Median 23.3 wk			

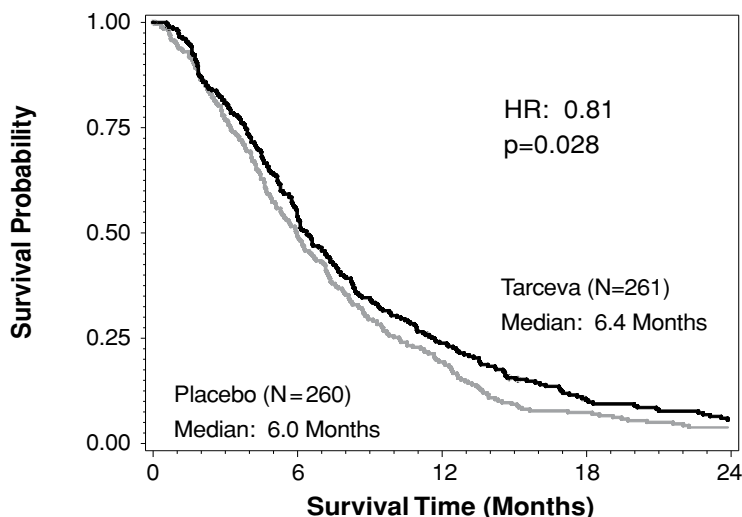
(1) Cox regression model with the following covariates: ECOG performance status, and extent of disease.

(2) Two-sided Log-Rank test stratified by ECOG performance status and extent of disease.

(3) Two-sided Fisher's exact test.

Survival was evaluated in the intent-to-treat population. Figure 3 depicts the Kaplan-Meier curves for overall survival in the 100 mg cohort. The primary survival and PFS analyses were two-sided Log-Rank tests stratified by ECOG performance status and extent of disease.

**Figure 3: Kaplan – Meier Curve for Overall Survival: 100 mg Cohort**



**Note:** HR is from Cox regression model with the following covariates: ECOG performance status and extent of disease. P-value is from two-sided Log-Rank test stratified by ECOG performance status and extent of disease.

### 16 HOW SUPPLIED/STORAGE AND HANDLING

25 mg Tablets

Round, biconvex face and straight sides, white film-coated, printed in orange with a "T" and "25" on one side and plain on the other side; supplied in:

Bottles of 30: NDC 50242-062-01

100 mg Tablets

Round, biconvex face and straight sides, white film-coated, printed in gray with "T" and "100" on one side and plain on the other side; supplied in:

Bottles of 30: NDC 50242-063-01

150 mg Tablets

Round, biconvex face and straight sides, white film-coated, printed in maroon with "T" and "150" on one side and plain on the other side; supplied in:

Bottles of 30: NDC 50242-064-01

Store at 25°C (77°F); excursions permitted to 15° – 30°C (59° – 86°F). See USP Controlled Room Temperature.

### 17 PATIENT COUNSELING INFORMATION

If the following signs or symptoms occur, patients should be advised to seek medical advice promptly [see *Warnings and Precautions (5)*, *Adverse Reactions (6)* and *Dosage and Administration (2.3)*].

- Onset or worsening of skin rash
- Severe or persistent diarrhea, nausea, anorexia, or vomiting
- Onset or worsening of unexplained shortness of breath or cough
- Eye irritation

Given that skin reactions are anticipated when taking TARCEVA, proactive intervention may include alcohol-free emollient cream and use of sunscreen or avoidance of sun exposure [see *Adverse Reactions (6.1)*]. The management of rash should be discussed with the patient. This may include topical corticosteroids or antibiotics with anti-inflammatory properties. These approaches were used in the NSCLC and pancreatic pivotal clinical trials. Acne preparations with drying properties may aggravate the dry skin and erythema. Treatment of rash has not been formally studied and should be based on rash severity.

Women of childbearing potential should be advised to avoid becoming pregnant while taking TARCEVA [see *Warnings and Precautions (5.12)* and *Use in Specific Populations (8.1)*].

Smokers should be advised to stop smoking while taking TARCEVA as plasma concentrations of erlotinib are reduced due to the effect of cigarette smoking [see *Clinical Pharmacology (12.3)*].

#### Manufactured for:

OSI Pharmaceuticals, LLC, Farmingdale, NY 11735  
an affiliate of Astellas Pharma US, Inc.

#### Manufactured by:

Kremers Urban Pharmaceuticals, Inc., Seymour, IN 47274

#### Distributed by:

Genentech USA, Inc. 1 DNA Way, South San Francisco, CA 94080-4990

For further information please call 1-877-TARCEVA (1-877-827-2382).



Astellas and the Flying Star logo are trademarks of Astellas Pharma Inc. Tarceva is a trademark of OSI Pharmaceuticals, LLC, Farmingdale, NY 11735, USA, an affiliate of Astellas Pharma US, Inc. ©2011 OSI Pharmaceuticals, LLC, an affiliate of Astellas Pharma US, Inc., and Genentech, Inc. All rights reserved.

Rev. 6/11 011F-071-3756 TAR0000508101