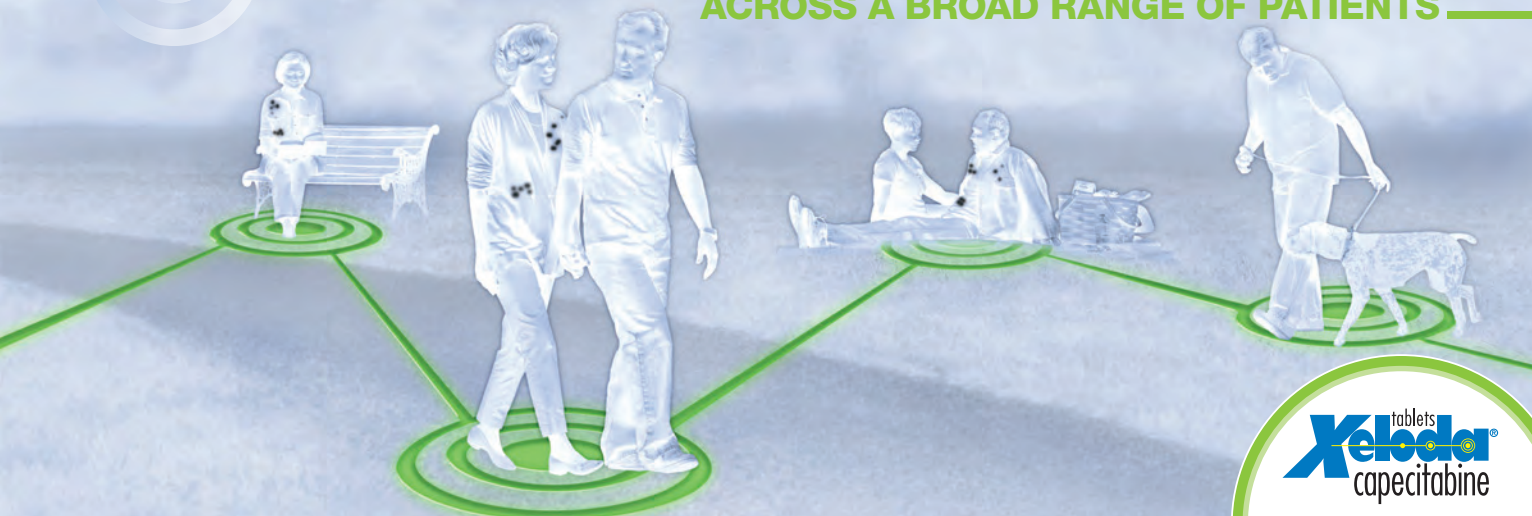


# EFFICACY THAT REACHES

**ACROSS A BROAD RANGE OF PATIENTS**



tablets  
**Xeloda**<sup>®</sup>  
capecitabine

## Indications

XELODA monotherapy is indicated for the treatment of patients with metastatic breast cancer resistant to both paclitaxel and an anthracycline-containing chemotherapy regimen or resistant to paclitaxel and for whom further anthracycline therapy is not indicated, eg, patients who have received cumulative doses of 400 mg/m<sup>2</sup> of doxorubicin or doxorubicin equivalents. Resistance is defined as progressive disease while on treatment, with or without an initial response, or relapse within 6 months of completing treatment with an anthracycline-containing adjuvant regimen.

XELODA in combination with docetaxel is indicated for the treatment of patients with metastatic breast cancer after failure of prior anthracycline-containing chemotherapy.

XELODA is indicated as a single agent for adjuvant treatment in patients with Dukes' C colon cancer who have undergone complete resection of the primary tumor when treatment with fluoropyrimidine therapy alone is preferred. XELODA was non-inferior to 5-fluorouracil and

leucovorin (5-FU/LV) for disease-free survival (DFS). Physicians should consider results of combination chemotherapy trials, which have shown improvement in DFS and OS, when prescribing single-agent XELODA in the adjuvant treatment of Dukes' C colon cancer.

## Boxed WARNING and Contraindications

Patients receiving concomitant capecitabine and oral coumarin-derivative anticoagulants such as warfarin and phenprocoumon should have their anticoagulant response (INR or prothrombin time) monitored frequently in order to adjust the anticoagulant dose accordingly. Altered coagulation parameters and/or bleeding, including death, have been reported during concomitant use.

XELODA is contraindicated in patients with known dihydropyrimidine dehydrogenase (DPD) deficiency, severe renal impairment, or known hypersensitivity to capecitabine or to any of its components or to 5-fluorouracil.

*Please see Important Safety Information, including Boxed WARNING, on pages 26-28 and full Prescribing Information.*

# XELODA THERAPY

## PROVEN EFFICACY ACROSS INDICATIONS

In clinical trials, XELODA successfully attained preplanned primary end points<sup>1,2</sup>

	mBC		mCRC	aCC
	XELODA + docetaxel (n=255) vs docetaxel alone (n=256)	Monotherapy* (N=162)	Monotherapy† (n=302) vs 5-FU/LV (n=303)	Monotherapy (n=1004) vs 5-FU/LV (n=983)
<b>Primary end points</b>	<b>Median TTP</b> 186 vs 128 days with docetaxel alone HR=0.643; P=0.0001	<b>ORR</b> 25.6%	<b>ORR</b> 21% vs 11% with 5-FU/LV P=0.0014	<b>5-year DFS</b> 59.1% vs 54.6% with 5-FU/LV (HR=0.88; 95% CI 0.77–1.01) Superiority P=0.068†
<b>Select secondary end points</b>	<b>Median OS</b> 442 vs 352 days with docetaxel alone HR=0.775; P=0.0126	<b>Median OS</b> 255 days	<b>Median OS</b> Noninferiority 380 vs 407 days with 5-FU/LV (HR=1.00, 95% CI 0.84–1.18)	<b>5-year OS</b> 71.4% vs 68.4% with 5-FU/LV (HR=0.86, 95% CI 0.74–1.01) Noninferiority P=0.000116 Superiority P=0.06†

\*The data populated in this column are based on a subgroup analysis of 43 patients on trial who were doubly resistant to paclitaxel and an anthracycline. For all patients with measurable disease (n=135), the ORR was 18.5%, median TTP was 90 days, and median OS was 306 days.

†Approval was based on 2 identical, Phase 3 studies. The results presented are from Study 1.

‡Not statistically significant.

### Important Safety Information— Monotherapy in mCRC

In two phase 3 trials of XELODA monotherapy in metastatic colorectal cancer, serious adverse events (grade 3/4) occurring in ≥5% of patients receiving either XELODA or 5-FU/LV (%;%) were hyperbilirubinemia (23;6), hand-foot syndrome (17;1), diarrhea (15;12), abdominal pain (<10;5), vomiting (<5;<5), ileus (5;3), stomatitis (<3;15), and

neutropenia (3;21). The most common adverse events for all grades occurring in ≥30% of patients receiving either XELODA or 5-FU/LV were anemia (80;79), diarrhea (55;61), hand-foot syndrome (54;6), hyperbilirubinemia (48;17), nausea (43;51), fatigue/weakness (42;46), abdominal pain (35;31), vomiting (27;30), appetite decrease (26;31), stomatitis (25;62), and neutropenia (13;46). A total of 82 deaths due to all causes occurred either on study or within 28 days of receiving study drug: 50 (8.4%) patients randomized to XELODA and 32 (5.4%) randomized to 5-FU/LV.

The NCCN<sup>§</sup> Clinical Practice Guidelines in Oncology (NCCN Guidelines™) include capecitabine (XELODA) as a preferred chemotherapy option:

mBC
In combination with docetaxel for mBC <sup>§</sup>
When used as a single agent for mBC <sup>§</sup>
For HER2-positive disease in combination with lapatinib for patients previously exposed to trastuzumab <sup>§  </sup>

### Lapatinib indication

Lapatinib is indicated in combination with XELODA for the treatment of patients with advanced or metastatic breast cancer whose tumors overexpress HER2 and who have received prior therapy including an anthracycline, a taxane, and trastuzumab.

### Lapatinib boxed warning

Hepatotoxicity has been observed in clinical trials and postmarketing experience. The hepatotoxicity may be severe and deaths have been reported. Causality of the deaths is uncertain.

<sup>§</sup>National Comprehensive Cancer Network.

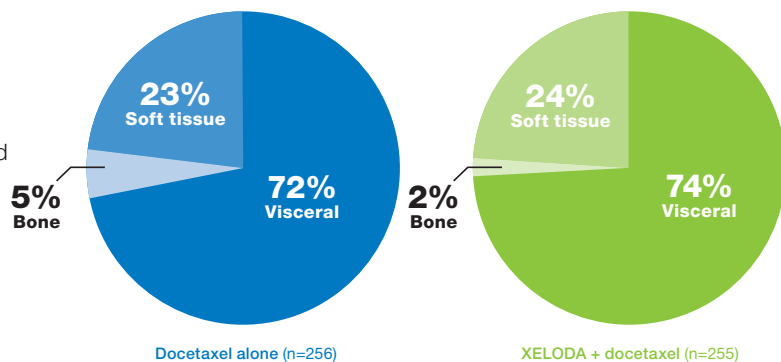
<sup>||</sup>The XELODA Prescribing Information does not include an indication for use with lapatinib.

# COMBINATION THERAPY

## FOR PATIENTS WITH mBC, INCLUDING THOSE WITH VISCERAL METASTASES

Approximately three-quarters of patients had predominantly visceral metastases<sup>4</sup>

74.1% in the XELODA + docetaxel arm and 71.5% in the docetaxel alone arm had predominantly visceral metastases<sup>4</sup>



### Important Safety Information

#### Combination Therapy with Docetaxel in mBC

In a phase 3 study of XELODA combination therapy (XELODA plus docetaxel) in metastatic breast cancer, serious adverse events (grade 3/4) occurring at a  $\geq 2\%$  higher incidence in patients receiving XELODA plus docetaxel vs docetaxel alone were:

	lymphocytopenia	hand-foot syndrome	stomatitis	
XELODA + docetaxel	89%	24%	<18%	
docetaxel	84%	1%	5%	
	diarrhea	anemia	hyperbilirubinemia	
XELODA + docetaxel	<15%	10%	9%	
docetaxel	<6%	<6%	4%	
	nausea	vomiting	constipation	nail disorder
XELODA + docetaxel	7%	5%	2%	2%
docetaxel	2%	2%	0%	0%

Patients were resistant to an anthracycline with or without prior chemotherapy treatment for metastatic disease<sup>1</sup>

	XELODA + docetaxel (n=255)	Docetaxel (n=256)
0	35%	31%
1	48%	53%
2	17%	15%
3	0%	1%



# COMBINATION THERAPY

## FOR PATIENTS WITH mBC, INCLUDING THOSE WITH VISCERAL METASTASES

Celia, an mBC patient with visceral disease, is a candidate for XELODA in combination with docetaxel.

Overview	66-year-old female with mBC resistant to anthracycline
ECOG PS	0
Clinical presentation	A persistent, nonproductive cough.
Prior clinical course	Patient received a right total mastectomy 15 months ago followed by adjuvant anastrozole. Subsequently, patient complained of right mid-clavicular low chest wall pain; diagnostic evaluation revealed lytic lesions in the right rib area demonstrated on bone scan. The patient's disease subsequently progressed through 2 further lines of endocrine treatment. A CT scan after her latest endocrine treatment revealed multiple liver metastases, and a bone scan revealed lytic lesions in 2 areas. She was then treated with doxorubicin and cyclophosphamide. After the third cycle, the patient presented to her HCP with a persistent, nonproductive cough. A CT scan to evaluate the etiology of her symptoms revealed pulmonary metastases and disease progression at previously known sites.
Biomarkers	ER+, PR+, HER2-

This is a composite case. Individual results may vary. Use your clinical judgment when treating your patients.

**NCCN Guidelines™ include capecitabine (XELODA) as a preferred chemotherapy in combination with docetaxel for metastatic breast cancer<sup>3</sup>**



# COMBINATION THERAPY

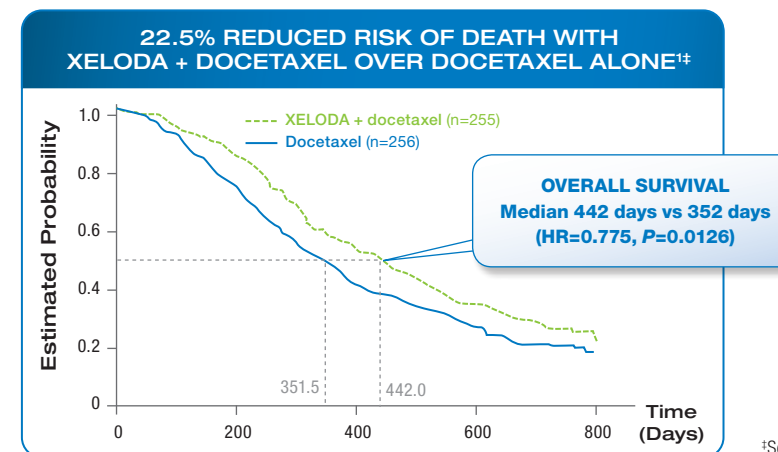
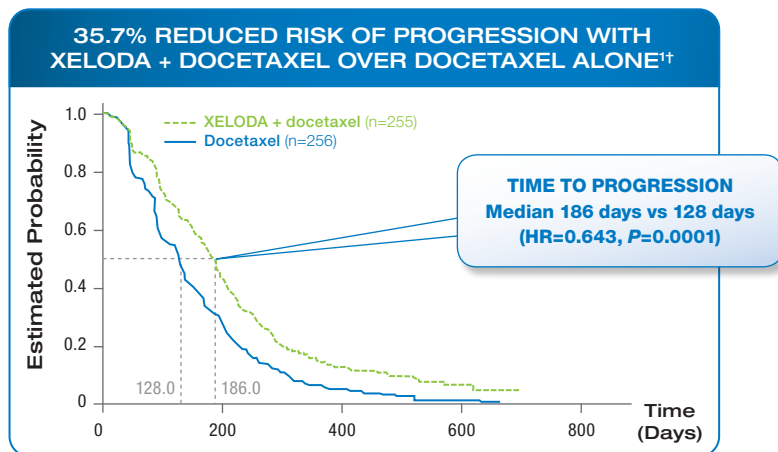
## HAS WELL-ESTABLISHED EFFICACY IN mBC

XELODA + docetaxel reduced the risk of progression and death over docetaxel alone<sup>1</sup>

- The overall response rate with XELODA plus docetaxel was 32% vs 22% with docetaxel alone ( $P=0.009$ )<sup>1\*</sup>

\*The response rate reported represents a reconciliation of the investigator and IRC assessments performed by the sponsor according to a predefined algorithm.

<sup>1</sup>Primary end point.



<sup>1</sup>Secondary end point.

### Important Safety Information

#### Combination Therapy with Docetaxel in mBC

In a phase 3 study of XELODA combination therapy (XELODA plus docetaxel) in metastatic breast cancer, serious adverse events (grade 3/4) occurring at a  $\geq 2\%$  higher incidence in patients receiving XELODA plus docetaxel vs docetaxel alone were:

	lymphocytopenia	hand-foot syndrome	
XELODA + docetaxel	89%	24%	
docetaxel	84%	1%	
	stomatitis	diarrhea	anemia
XELODA + docetaxel	<18%	<15%	10%
docetaxel	5%	<6%	<6%

	hyperbilirubinemia	nausea	vomiting
XELODA + docetaxel	9%	7%	5%
docetaxel	4%	2%	2%
	constipation	nail disorder	
XELODA + docetaxel	2%	2%	
docetaxel	0%	0%	

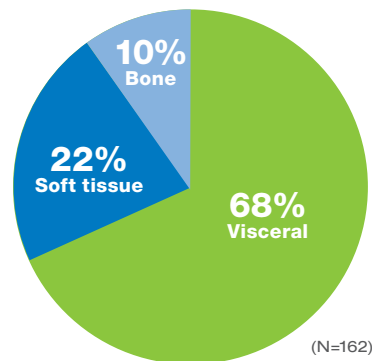
# MONOTHERAPY

## FOR PATIENTS WITH mBC, INCLUDING THOSE WITH HIGH TUMOR BURDEN

The XELODA pivotal monotherapy trial enrolled a challenging patient population

**68%** (~2/3) of patients had predominantly visceral metastases<sup>1</sup>

**64%** (~2/3) of patients had metastatic disease found at 3 or more sites (N=162)<sup>1</sup>



MOST PATIENTS ALSO HAD WIDELY DISSEMINATED DISEASE	
Number of Disease Sites	(N=162)
1-2	60 (37%)
3-4	69 (43%)
>5	34 (21%)

lymphopenia	diarrhea	hand-foot syndrome	hyperbilirubinemia
59%	15%	11%	11%
fatigue	stomatitis	dehydration	
8%	7%	5%	

### Important Safety Information

#### Monotherapy in mBC

In a single-arm study of XELODA monotherapy in metastatic breast cancer, serious adverse events (grade 3/4) occurring in ≥5% of patients receiving XELODA were:

**31%** (~1/3) of patients were resistant to both paclitaxel and an anthracycline<sup>1</sup>

PATIENT POPULATION	PATIENTS WITH MEASURABLE DISEASE (n=135)	ALL PATIENTS (N=162)
Resistance to an anthracycline	55 (41%)	67 (41%)
Resistance to both paclitaxel and an anthracycline	43 (32%)	51 (31%)
Resistance to paclitaxel	103 (76%)	124 (77%)



# MONOTHERAPY

## FOR PATIENTS WITH mBC, INCLUDING THOSE WITH HIGH TUMOR BURDEN

Lisa, an mBC patient with visceral disease, is a candidate for XELODA monotherapy.

Overview	58-year-old female with mBC resistant to paclitaxel
ECOG PS	1
Clinical presentation	Subcutaneous nodules of varying sizes on her chest wall and left upper arm.
Clinical course	Patient was diagnosed with Stage IIIB left breast cancer and received neoadjuvant doxorubicin, cyclophosphamide, and docetaxel. She then underwent a left modified radical mastectomy, followed by a full course of external beam radiation and adjuvant anastrozole. 18 months after completion of neoadjuvant therapy, patient noticed subcutaneous nodules on her chest wall and left upper arm. Biopsies of subcutaneous nodules revealed metastatic disease to the soft tissue. Further radiographic workup was performed. CT scan of chest and abdomen revealed multiple metastatic lesions in the lung and liver. Patient was started on paclitaxel. Evaluation after the 2nd cycle revealed disease progression at previous known sites of disease.
Biomarkers	ER+, PR-, HER2-

This is a composite case. Individual results may vary. Use your clinical judgment when treating your patients.

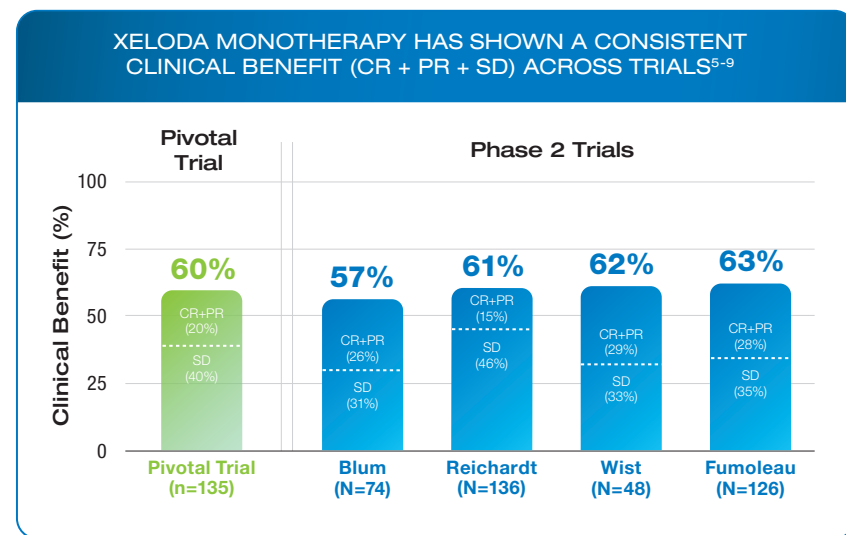
**NCCN Guidelines include capecitabine (XELODA) as a preferred chemotherapy option, when used as a single agent for metastatic breast cancer<sup>3</sup>**



# MONOTHERAPY

**DELIVERED A CLINICAL BENEFIT (CR + PR + SD) FOR 60% OF mBC PATIENTS IN A CLINICAL TRIAL (n=135)<sup>5\*</sup>**

The pivotal monotherapy trial successfully demonstrated a clinical benefit across primary and secondary end points



<sup>5</sup>In a subgroup of patients with measurable disease who were assessable for response (n=135) in a multicenter, open-label, single-arm phase 2 study (N=162).<sup>1</sup>

	PRIMARY END POINT	SECONDARY END POINTS	
	ORR	Median TTP	Median OS
Patients doubly resistant (n=43) <sup>1</sup>	25.6% (95% CI 13.5%–41.2%)	102 days	255 days
Patients with measurable disease (n=135) <sup>1</sup>	18.5%	90 days	306 days

## Important Safety Information

### Monotherapy in mBC

In a single-arm study of XELODA monotherapy in metastatic breast cancer, serious adverse events (grade 3/4) occurring in ≥5% of patients receiving XELODA were:

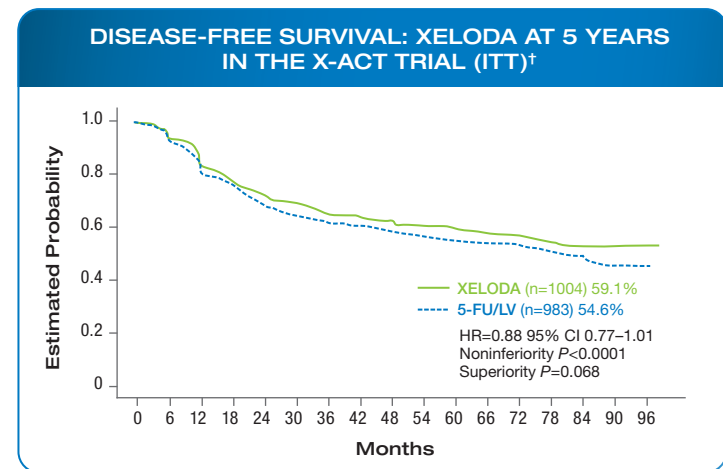
lymphopenia	diarrhea	hand-foot syndrome	hyperbilirubinemia
59%	15%	11%	11%
fatigue	stomatitis	dehydration	
8%	7%	5%	



# ADJUVANT MONOTHERAPY

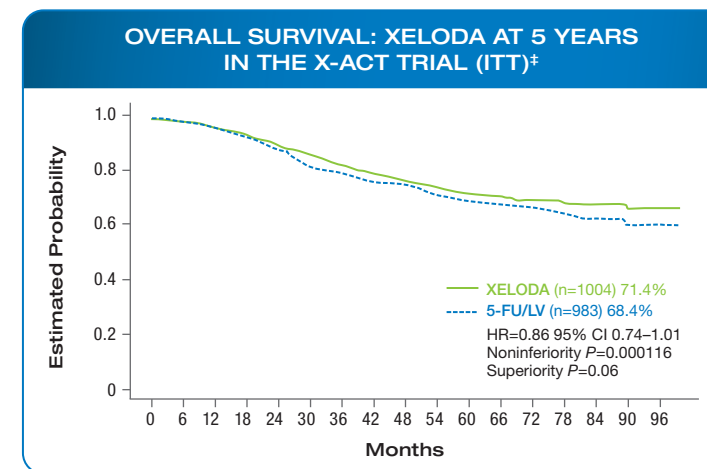
## FOR THE TREATMENT OF DUKES' C (STAGE III) COLON CANCER

XELODA demonstrated long-term efficacy in the adjuvant treatment of Dukes' C (Stage III) colon cancer<sup>1,2\*</sup>



\*A multicenter, randomized, controlled, phase 3 clinical trial in patients with Dukes' C colon cancer (X-ACT) provided data concerning the use of XELODA for the adjuvant treatment of patients with colon cancer. The primary objective of the study was to compare disease-free survival (DFS) in patients receiving XELODA to those receiving IV 5-FU/LV alone.

<sup>†</sup>Primary end point.



<sup>†</sup>Secondary end point.

With 1987 patients enrolled, X-ACT was one of the largest trials in aCC<sup>1</sup>

### Important Safety Information

#### Monotherapy in Adjuvant Colon Cancer

In a phase 3 study of XELODA monotherapy in colon cancer in the adjuvant setting, serious adverse events (grade 3/4) occurring in ≥5% of patients receiving either XELODA or 5-FU/LV were:

	diarrhea	decrease in neutrophils/ granulocytes	stomatitis	neutropenia
XELODA	12%	2%	2%	<1%
5-FU/LV	14%	26%	14%	5%

	increase in bilirubin	hand-foot syndrome	decrease in lymphocytes
XELODA	20%	17%	13%
5-FU/LV	6%	<1%	13%



# Genentech BioOncology Co-pay Card

One card. One point of access. One more way to help your patients.

## One card

At Genentech BioOncology, we are committed to helping patients access the therapies they need. We've made some changes to the Genentech BioOncology Co-pay Card that will help simplify patient enrollment.

## How does the card work?

There is now one card for all of our Genentech cancer therapies, with one set of eligibility criteria, one set of benefits, and one number to call.

The card reduces out-of-pocket costs for your eligible patients, regardless of income.\* Out-of-pocket costs are defined as the co-pay, co-insurance or deductible for your patients' therapy. This must be clearly defined on the Explanation of Benefits when submitted.



**Financial assistance to help patients pay their out-of-pocket costs for Genentech cancer therapies**

\*If your patients' annual household income is >\$100,000 per year, the card limit is reduced.

## Who is eligible?

Eligible	Not Eligible
<ul style="list-style-type: none"><li>● Covered by commercial insurance (non-governmental)</li><li>● Age 18 years or older</li></ul>	<ul style="list-style-type: none"><li>● Participating in Medicare, Medicaid, Medigap, VA, DoD or Tricare (or any other federally- or state-funded benefit programs, including government employee plans)</li><li>● Uninsured (refer to Genentech® Access To Care Foundation [GATCF]) or currently participating in GATCF</li><li>● Currently residing or receiving services in Massachusetts or Vermont</li></ul>

## Terms and Conditions

**Patient:** Use of the card does not obligate you to use or continue using any specific product or provider. If you have any questions regarding your eligibility or benefits, or if you wish to no longer be part of the program, contact Genentech BioOncology Co-pay Card at **855-MYCOPAY**.

You may receive additional program information about the Genentech BioOncology Co-pay Card once you are enrolled. Genentech BioOncology™ Access Solutions® can also activate this card for you.

**Pharmacist/Physician:** You may be obligated under your contracts with payers to disclose acceptance of funds provided through the card program as payment for the products dispensed to your patient. You may not advertise or otherwise use the card as a means of promoting your services or Genentech's products to patients. For questions regarding enrollment, claim transmission, patient eligibility, or other issues contact Genentech BioOncology Co-pay Card: via phone at **855-MYCOPAY** from 9 AM - 8 PM EST, Monday to Friday. On our Web site at **www.CopayAssistanceNow.com**.

**General:** No person or entity may seek reimbursement from any third-party payer for any amount provided using the card program. Use of this card must be consistent with all relevant health insurance requirements and payer agreements. Participating patients and pharmacies are obligated to inform third-party payers about this card as provided for under the applicable insurance or as otherwise required by contract or law. Genentech USA, Inc. reserves the right to deny payment under the card to anyone deemed ineligible in accordance with the stated program criteria.

# Genentech BioOncology Co-pay Card

One card. One point of access. One more way to help your patients.

## Getting started

### How to enroll your patients

#### Patients on oral therapy

1. Give your patient a brochure with enclosed card.
2. Have your patient call **855-MYCOPAY (855-692-6729)** from 9 AM - 8 PM ET, Monday to Friday, or visit [www.CopayAssistanceNow.com](http://www.CopayAssistanceNow.com).\*
3. If patient is eligible, the card is activated.

#### What about patients who are not eligible?

A Genentech BioOncology™ Access Solutions® Specialist can refer ineligible patients to an independent, non-profit organization (INO)<sup>†</sup> that may be able to help. Uninsured patients may be able to get free therapy through GATCF. Contact Genentech BioOncology Access Solutions at (888) 249-4918 from 6 AM - 5 PM PT, Monday to Friday, or visit [BioOncologyAccessSolutions.com](http://BioOncologyAccessSolutions.com) to find out more.

\*Your patients will need to provide the 9-digit code on their card and answer a few simple questions, including their name, address, phone number, zip code, and date of birth.

<sup>†</sup>Genentech BioOncology does not influence or control the operations of these INOs, but Genentech BioOncology Access Solutions can assist patients in navigating the process of seeking co-pay assistance by making an appropriate referral based on a patient's diagnosis and by assisting with the application process. We cannot guarantee co-pay assistance once a patient has been referred by Genentech BioOncology Access Solutions. The INOs to which we refer patients each have their own criteria for patient eligibility, including financial eligibility.

## One more way to help your patients

### How much does the card cover?

<b>Card covers</b>	80% of your patients' out-of-pocket costs for their Genentech cancer therapy
<b>Patients' responsibility</b>	20% of out-of-pocket costs for their Genentech cancer therapy
<b>Card limit</b>	Up to \$4,000 per year <sup>‡</sup>

<sup>‡</sup>Patients who make a household income of >\$100,000 per year have a yearly limit of \$1,500. Patients only need to provide a verbal statement to verify their income when they enroll. Proof of documentation at a later date may be required.

## One point of access

### Making it easier for you to start the process



If you want to enroll your patients or have any questions

Call **855-MYCOPAY (855-692-6729)**  
from 9 AM - 8 PM ET, Monday to Friday

# ADDITIONAL PATIENT SUPPORT

## A VARIETY OF PROGRAMS ARE AVAILABLE FOR YOUR XELODA PATIENTS

XELODA Access Solutions helps patients access our medicine, regardless of their ability to pay

### Coverage and Reimbursement

- Help with benefits and coverage issues
  - Benefits investigation
  - Prior authorization
  - Recertification
- Help with reimbursement issues
  - Denials and appeals
  - Billing and coding information

### Patient Assistance

- Genentech® Access to Care Foundation (GATCF) support for qualifying uninsured and rendered uninsured patients
- Referrals to independent, non-profit organizations for co-pay assistance
- BioOncology™ Co-pay Card Program
- CancerCare

### Informational Resources

- My Patient Solutions, our online patient management tool
- Communication assistance services
  - Translation services
  - Telephone to telephone typewriter (TTY) services
- Product spoilage and replacement information
- Medicare/Medicaid search tool
- Glossary of access and reimbursement terms

BioOncology™ Co-pay Card Program helps patients reduce their out-of-pocket co-pay expenses

CancerCare is a leading national non-profit organization offering counseling, education, and practical help free of charge to anyone affected by cancer



**To speak live with one of our Specialists, call 1-888-249-4918, 6 am-5 pm PT, Monday-Friday, fax 1-888-249-4918, or visit [www.XELODAAccessSolutions.com](http://www.XELODAAccessSolutions.com)**

# ADDITIONAL PATIENT SUPPORT

## A VARIETY OF PROGRAMS ARE AVAILABLE FOR YOUR XELODA PATIENTS

The New XELODA Support Program: More accessible, more convenient, more support for your XELODA patients\*

The new XELODA Support Program complements the materials your patients receive in the office



- Live, one-on-one phone support available from registered oncology nurses—now available 24 hours a day, 7 days a week
  - In addition to receiving 9 outbound phone calls from registered oncology nurses trained about XELODA, patients can now call and ask questions when it is convenient for them. Translation available in 150 languages



- E-mails that address patients' worries and concerns, such as taking XELODA and identifying and managing side effects, throughout 25 weeks of treatment
  - Includes 3 diagnosis-specific and 3 general e-mails—6 e-mails in all



- Direct mail brochures—a brand-new tool in the XELODA Support Program
  - Three brochures are timed to address patient concerns at key points in their treatment. They are designed to help patients prepare before, during, and after their office visits with you; they contain checklists and spaces for patients to write in their thoughts and questions and encourage dialogue between patients and you



- Topics in the new XELODA Support Program include:
  - Taking XELODA
  - Identifying and managing side effects
  - Understanding dosing changes
  - Getting support
  - Setting expectations
  - Staying with a XELODA routine
  - Managing stress
  - Managing fears of recurrence or progression
  - Maintaining a healthy lifestyle

To enroll, patients can:



**Call 1-877-987-2487**  
24 hours a day, 7 days a week

or



**Enroll online**  
[www.xelodasupport.com](http://www.xelodasupport.com)

\*This program is not intended to replace the advice and guidance of a health care professional. Formerly known as XTRA.

# BOXED WARNING

## AND ADDITIONAL IMPORTANT SAFETY INFORMATION

### Warfarin Interaction – Coagulopathy

- Patients receiving concomitant capecitabine and oral coumarin-derivative anticoagulant therapy should have their anticoagulant response (INR or prothrombin time) monitored frequently in order to adjust the anticoagulant dose accordingly.
- A clinically important XELODA-Warfarin drug interaction was demonstrated in a clinical pharmacology trial.
- Altered coagulation parameters and/or bleeding, including death, have been reported in patients taking XELODA concomitantly with coumarin-derivative anticoagulants such as warfarin and phenprocoumon.
- Postmarketing reports have shown clinically significant increases in prothrombin time (PT) and INR have been observed in patients who were stabilized on anticoagulants at the time XELODA was introduced. These events occurred within several days and up to several months after initiating XELODA therapy, and in some cases within 1 month after stopping XELODA. These events occurred in patients with and without liver metastases.
- Age greater than 60 and a diagnosis of cancer independently predispose patients to an increased risk of coagulopathy.

### Contraindications

- XELODA is contraindicated in patients with known hypersensitivity to capecitabine or to any of its components or to 5-fluorouracil.

### Dihydropyrimidine Dehydrogenase (DPD) Deficiency

- XELODA is contraindicated in patients with known DPD deficiency. Rarely, unexpected, severe toxicity (eg, stomatitis, diarrhea, neutropenia, and neurotoxicity) associated with 5-fluorouracil has been attributed to a deficiency of DPD activity. A link between decreased levels of DPD and increased, potentially fatal toxic effects of 5-fluorouracil therefore cannot be excluded.

### Renal Insufficiency

- XELODA is also contraindicated in patients with severe renal impairment (creatinine clearance below 30 mL/min [Cockcroft and Gault]).
  - Patients with moderate renal impairment at baseline require dose reduction. Patients with mild or moderate renal impairment at baseline should be carefully monitored for adverse events. Prompt interruption of therapy with subsequent dose adjustments is recommended if a patient develops a grade 2 to 4 adverse event as outlined in the Dosage and Administration section of the XELODA prescribing information.

### Warnings, and Precautions

#### Diarrhea

- XELODA can induce diarrhea, sometimes severe. Patients with severe diarrhea should be carefully monitored and given fluid and electrolyte replacement if they become dehydrated.
  - If grade 2, 3, or 4 diarrhea occurs, administration of XELODA should be immediately interrupted until the diarrhea resolves or decreases in intensity to grade 1. Following a reoccurrence of grade 2 diarrhea or occurrence of any grade 3 or 4 diarrhea, subsequent doses of XELODA should be decreased. Standard antidiarrheal treatments are recommended.
  - Necrotizing enterocolitis (typhlitis) has been reported.

#### Cardiotoxicity

- The cardiotoxicity observed with XELODA includes myocardial infarction/ischemia, angina, dysrhythmias, cardiac arrest, cardiac failure, sudden death, electrocardiographic changes, and cardiomyopathy. These adverse reactions may be more common in patients with a prior history of coronary artery disease.

### Pregnancy Category D

- XELODA may cause fetal harm when given to a pregnant woman. There are no adequate and well-controlled studies in pregnant women using XELODA. If the drug is used during pregnancy, or if the patient becomes pregnant while receiving this drug, the patient should be apprised of the potential hazard to the fetus. Women should be advised to avoid becoming pregnant while receiving treatment with XELODA. Because of the potential for serious adverse reactions in nursing infants from capecitabine, a decision should be made whether to discontinue nursing or to discontinue the drug, taking into account the importance of the drug to the mother.

### Hand-and-Foot-Syndrome

- Hand-and-Foot-Syndrome (palmar-plantar erythrodysesthesia or chemotherapy-induced acral erythema) is a cutaneous toxicity.
- Median time to onset was 79 days (range from 11 to 360 days) with a severity range of grades 1 to 3 for patients receiving XELODA monotherapy in the metastatic setting.
- If grade 2 or 3 hand-and-foot syndrome occurs, administration of XELODA should be interrupted until the event resolves or decreases in intensity to grade 1. Following grade 3 hand-and-foot syndrome, subsequent doses of XELODA should be decreased.

# BOXED WARNING

## AND ADDITIONAL IMPORTANT SAFETY INFORMATION

### Hyperbilirubinemia

- If drug-related grade 3 to 4 elevations in bilirubin occur, administration of XELODA should be immediately interrupted until the hyperbilirubinemia decreases to  $\leq 3.0 \times \text{ULN}$ .

### Hematologic

- Patients with baseline neutrophil counts  $< 1.5 \times 10^9/\text{L}$  and/or thrombocyte counts  $< 100 \times 10^9/\text{L}$  should not be treated with XELODA. If unscheduled laboratory assessments during a treatment cycle show grade 3 or 4 hematologic toxicity, treatment with XELODA should be interrupted.

### Geriatric Patients

- Patients  $\geq 80$  years old may experience a greater incidence of grade 3 or 4 adverse events.

### Hepatic Insufficiency

- Patients with mild to moderate hepatic dysfunction due to liver metastases should be carefully monitored when XELODA is administered. The effect of severe hepatic dysfunction on the disposition of XELODA is not known.

### Drug Interactions

- Use of XELODA in combination with irinotecan has not been adequately studied.
- The level of phenytoin should be carefully monitored in patients taking XELODA and the dose of phenytoin may need to be reduced. Postmarketing reports indicate that some patients receiving XELODA and phenytoin had toxicity associated with elevated phenytoin levels.
- The concentration of 5-fluorouracil is increased and its toxicity may be enhanced by leucovorin. Deaths from severe enterocolitis, diarrhea, and dehydration have been reported in elderly patients receiving weekly leucovorin and fluorouracil.
- Other than warfarin, no formal drug-drug interaction studies between XELODA and other CYP2C9 substrates have been conducted. Care should be exercised when XELODA is coadministered with CYP2C9 substrates.
- Food was shown to reduce both the rate of and extent of absorption of capecitabine.



## Boxed WARNING and Additional Important Safety Information

### Boxed Warning

#### Warfarin Interaction - Coagulopathy

- Patients receiving concomitant capecitabine and oral coumarin-derivative anticoagulant therapy should have their anticoagulant response (INR or prothrombin time) monitored frequently in order to adjust the anticoagulant dose accordingly.
- A clinically important XELODA-Warfarin drug interaction was demonstrated in a clinical pharmacology trial.
- Altered coagulation parameters and/or bleeding, including death, have been reported in patients taking XELODA concomitantly with coumarin-derivative anticoagulants such as warfarin and phenprocoumon.
- Postmarketing reports have shown clinically significant increases in prothrombin time (PT) and INR have been observed in patients who were stabilized on anticoagulants at the time XELODA was introduced. These events occurred within several days and up to several months after initiating XELODA therapy, and in a few cases within 1 month after stopping XELODA. These events occurred in patients with and without liver metastases.
- Age greater than 60 and a diagnosis of cancer independently predispose patients to an increased risk of coagulopathy.

- XELODA is contraindicated in patients with known dihydropyrimidine dehydrogenase (DPD) deficiency, or severe renal impairment. XELODA is also contraindicated in patients with known hypersensitivity to capecitabine or to any of its components or to 5-fluorouracil.
- Additional serious adverse reactions include diarrhea, cardiotoxicity, hand-and-foot syndrome, and hyperbilirubinemia. XELODA can cause fetal harm. Advise women of the potential risk to the fetus. Do not treat patients with neutrophil counts  $<1.5 \times 10^9/L$  or thrombocyte counts  $<100 \times 10^9/L$ .
- The most common adverse reactions ( $\geq 30\%$ ) reported were diarrhea, hand-and-foot syndrome, nausea, vomiting, abdominal pain, fatigue/weakness, and hyperbilirubinemia. Other adverse reactions, including serious adverse reactions, have been reported.

**References** 1. Xeloda [package insert]. South San Francisco, CA: Genentech USA, Inc; 2011. 2. Twelves C, Scheithauer W, McKendrick J, et al. Capecitabine versus 5-FU/LV in stage III colon cancer: updated 5-year efficacy data from X-ACT trial and preliminary analysis of relationship between handfoot syndrome (HFS) and efficacy. Presented at: American Society of Clinical Oncology Annual Meeting; May 30-June 3, 2008; Chicago, Illinois (Poster 274). 3. Referenced with permission from the NCCN Guidelines™ for Breast Cancer V.2.2011. ©2011 National Comprehensive Cancer Network, Inc. All rights reserved. The NCCN Guidelines™ may not be reproduced in any form for any purpose without the express written permission of the NCCN. To view the most recent and complete version of the NCCN Guidelines™, go online to NCCN.org. 4. XELODA (capecitabine) Efficacy Supplement Clinical Review, NDA Number 20,896. U.S. Food and Drug Administration. <http://www.accessdata.fda.gov>. Accessed May 11, 2011. 5. Blum JL, Jones SE, Buzdar AU, et al. Multicenter phase II study of capecitabine in paclitaxel refractory metastatic breast cancer. *J Clin Oncol*. 1999;17(2):485-493. 6. Blum JL, Dieras V, Lo Russo PM, et al. Multicenter, phase II study of capecitabine in taxane-pretreated metastatic breast carcinoma patients. *Cancer*. 2001;92(7):1759-1768. 7. Reichardt P, von Minckwitz G, Thuss-Patience PC, et al. Multicenter phase II study of oral capecitabine (Xeloda) in patients with metastatic breast cancer relapsing after treatment with a taxane containing therapy. *Ann Oncol*. 2003;14:1227-1233. 8. Wist EA, Sommer HH, Ostenstad B, et al. Oral capecitabine in anthracycline- and taxane-pretreated advanced/metastatic breast cancer. *Acta Oncologica*. 2004;2:186-189. 9. Fumoleau P, Largillier R, Clippe C, et al. Multicentre, phase II study evaluating capecitabine monotherapy in patients with anthracycline- and taxane-pretreated metastatic breast cancer. *Eur J Cancer*. 2004;40:536-542.

Genentech BioOncology™ and its logo are trademarks and the Access Solutions logo is a registered trademark of Genentech, Inc.

*Please see Important Safety Information, including Boxed WARNING, on pages 26-28 and full Prescribing Information.*

**Genentech**  
A Member of the Roche Group

©2011 Genentech USA, Inc. All rights reserved.  
06/11 XEL0000473100

tablets  
**Xeloda**®  
capecitabine

## HIGHLIGHTS OF PRESCRIBING INFORMATION

These highlights do not include all the information needed to use XELODA® safely and effectively. See full prescribing information for XELODA®.

XELODA® (capecitabine) Tablets, Film Coated for Oral use  
Initial U.S. Approval: 1998

### WARNING: XELODA-WARFARIN INTERACTION

See full prescribing information for complete boxed warning.

Patients receiving concomitant XELODA and oral coumarin-derivative anticoagulants such as warfarin and phenprocoumon should have their anticoagulant response (INR or prothrombin time) monitored frequently in order to adjust the anticoagulant dose accordingly. Altered coagulation parameters and/or bleeding, including death, have been reported during concomitant use.

- **Occurrence:** Within several days and up to several months after initiating XELODA therapy; may also be seen within 1 month after stopping XELODA
- **Predisposing factors:** age>60 and diagnosis of cancer

### INDICATIONS AND USAGE

XELODA (capecitabine) is a nucleoside metabolic inhibitor with antineoplastic activity indicated for:

- **Adjuvant Colon Cancer** (1.1)
  - Patients with Dukes' C colon cancer
- **Metastatic Colorectal Cancer** (1.1)
  - First-line as monotherapy when treatment with fluoropyrimidine therapy alone is preferred
- **Metastatic Breast Cancer** (1.2)
  - In combination with docetaxel after failure of prior anthracycline-containing therapy
  - As monotherapy in patients resistant to both paclitaxel and an anthracycline-containing regimen

### DOSAGE AND ADMINISTRATION

- Take XELODA with water within 30 min after a meal (2)
- Monotherapy: 1250 mg/m<sup>2</sup> twice daily orally for 2 weeks followed by a one week rest period in 3-week cycles (2.1)
- Adjuvant treatment is recommended for a total of 6 months (8 cycles) (2.1)
- In combination with docetaxel, the recommended dose of XELODA is 1250 mg/m<sup>2</sup> twice daily for 2 weeks followed by a 7-day rest period, combined with docetaxel at 75 mg/m<sup>2</sup> as a 1-hour IV infusion every 3 weeks (2.1)
- XELODA dosage may need to be individualized to optimize patient management (2.2)
- Reduce the dose of XELODA by 25% in patients with moderate renal impairment (2.3)

### DOSAGE FORMS AND STRENGTHS

- Tablets: 150 mg and 500 mg (3)

### CONTRAINDICATIONS

- Dihydropyrimidine dehydrogenase (DPD) deficiency (4.1)
- Severe Renal Impairment (4.2)
- Hypersensitivity (4.3)

### WARNINGS AND PRECAUTIONS

- **Diarrhea:** May be severe. Interrupt XELODA treatment immediately until diarrhea resolves or decreases to grade 1. Recommend standard antidiarrheal treatments. (5.1)
- **Coagulopathy:** May result in bleeding, death. Monitor anticoagulant response (e.g., INR) and adjust anticoagulant dose accordingly. (5.2)
- **Cardiotoxicity:** Common in patients with a prior history of coronary artery disease. (5.3)
- **Pregnancy:** Can cause fetal harm. Advise women of the potential risk to the fetus. (5.6, 8.1)
- **Hand-and-Foot Syndrome (Grade 2 or 3):** Interrupt XELODA treatment until the event resolves or decreases in intensity. (5.7)
- **Hyperbilirubinemia (Grade 2 to 4):** Interrupt XELODA treatment immediately until the hyperbilirubinemia resolves or decreases in intensity. (5.8)
- **Hematologic:** Do not treat patients with neutrophil counts <1.5 x 10<sup>9</sup>/L or thrombocyte counts <100 x 10<sup>9</sup>/L. If grade 3-4 neutropenia or thrombocytopenia occurs, stop therapy until condition resolves. (5.9)

### ADVERSE REACTIONS

Most common adverse reactions (≥30%) were diarrhea, hand-and-foot syndrome, nausea, vomiting, abdominal pain, fatigue/weakness, and hyperbilirubinemia. Other adverse reactions, including serious adverse reactions, have been reported. (6)

To report SUSPECTED ADVERSE REACTIONS, contact Genentech at 1-888-835-2555 or FDA at 1-800-FDA-1088 or [www.fda.gov/medwatch](http://www.fda.gov/medwatch)

### DRUG INTERACTIONS

- Anticoagulants: Monitor anticoagulant response (INR or prothrombin time) frequently in order to adjust the anticoagulant dose as needed. (5.2, 7.1)
- Phenytoin: Monitor phenytoin levels in patients taking XELODA concomitantly with phenytoin. The phenytoin dose may need to be reduced. (7.1)
- Leucovorin: The concentration of 5-fluorouracil is increased and its toxicity may be enhanced by leucovorin. (7.1)
- CYP2C9 substrates: Care should be exercised when XELODA is coadministered with CYP2C9 substrates. (7.1)
- Food reduced both the rate and extent of absorption of capecitabine. (2, 7.1, 12.3)

### USE IN SPECIFIC POPULATIONS

- **Nursing Mothers:** Discontinue nursing when receiving XELODA treatment. (8.3)
- **Geriatric:** Greater incidence of adverse reactions. Monitoring required. (8.5)
- **Hepatic Impairment:** Monitoring is recommended in patients with mild to moderate hepatic impairment. (8.6)
- **Renal Impairment:** Reduce XELODA starting dose in patients with moderate renal impairment (2.3, 8.7, 12.3)

See 17 for PATIENT COUNSELING INFORMATION and FDA-approved patient labeling

Revised: 02/2011

## **FULL PRESCRIBING INFORMATION: CONTENTS\***

### **WARNING: XELODA-WARFARIN INTERACTION**

#### **1 INDICATIONS AND USAGE**

- 1.1 Colorectal Cancer
- 1.2 Breast Cancer

#### **2 DOSAGE AND ADMINISTRATION**

- 2.1 Standard Starting Dose
- 2.2 Dose Management Guidelines
- 2.3 Adjustment of Starting Dose in Special Populations

#### **3 DOSAGE FORMS AND STRENGTHS**

#### **4 CONTRAINDICATIONS**

- 4.1 Dihydropyrimidine Dehydrogenase (DPD) Deficiency
- 4.2 Severe Renal Impairment
- 4.3 Hypersensitivity

#### **5 WARNINGS AND PRECAUTIONS**

- 5.1 Diarrhea
- 5.2 Coagulopathy
- 5.3 Cardiotoxicity
- 5.4 Dihydropyrimidine Dehydrogenase Deficiency
- 5.5 Renal Insufficiency
- 5.6 Pregnancy
- 5.7 Hand-and-Foot Syndrome
- 5.8 Hyperbilirubinemia
- 5.9 Hematologic
- 5.10 Geriatric Patients
- 5.11 Hepatic Insufficiency
- 5.12 Combination With Other Drugs

#### **6 ADVERSE REACTIONS**

- 6.1 Adjuvant Colon Cancer
- 6.2 Metastatic Colorectal Cancer
- 6.3 Breast Cancer
- 6.4 Clinically Relevant Adverse Events in <5% of Patients

#### **7 DRUG INTERACTIONS**

- 7.1 Drug-Drug Interactions
- 7.2 Drug-Food Interaction

#### **8 USE IN SPECIFIC POPULATIONS**

- 8.1 Pregnancy: Category D
- 8.3 Nursing Mothers
- 8.4 Pediatric Use
- 8.5 Geriatric Use
- 8.6 Hepatic Insufficiency
- 8.7 Renal Insufficiency

#### **10 OVERDOSAGE**

#### **11 DESCRIPTION**

#### **12 CLINICAL PHARMACOLOGY**

- 12.1 Mechanism of Action
- 12.3 Pharmacokinetics

#### **13 NONCLINICAL TOXICOLOGY**

- 13.1 Carcinogenesis, Mutagenesis, Impairment of Fertility

#### **14 CLINICAL STUDIES**

- 14.1 Adjuvant Colon Cancer
- 14.2 Metastatic Colorectal Cancer
- 14.3 Breast Cancer

#### **15 REFERENCES**

#### **16 HOW SUPPLIED/STORAGE AND HANDLING**

#### **17 PATIENT COUNSELING INFORMATION**

- 17.1 Information for Patients (see Patient Package Insert)
- 17.2 Patient Package Insert

\*Sections or subsections omitted from the full prescribing information are not listed

---

## FULL PRESCRIBING INFORMATION

### WARNING: XELODA-WARFARIN INTERACTION

XELODA Warfarin Interaction: Patients receiving concomitant capecitabine and oral coumarin-derivative anticoagulant therapy should have their anticoagulant response (INR or prothrombin time) monitored frequently in order to adjust the anticoagulant dose accordingly. A clinically important XELODA-Warfarin drug interaction was demonstrated in a clinical pharmacology trial [see *Warnings and Precautions (5.2) and Drug Interactions (7.1)*]. Altered coagulation parameters and/or bleeding, including death, have been reported in patients taking XELODA concomitantly with coumarin-derivative anticoagulants such as warfarin and phenprocoumon. Postmarketing reports have shown clinically significant increases in prothrombin time (PT) and INR in patients who were stabilized on anticoagulants at the time XELODA was introduced. These events occurred within several days and up to several months after initiating XELODA therapy and, in a few cases, within 1 month after stopping XELODA. These events occurred in patients with and without liver metastases. Age greater than 60 and a diagnosis of cancer independently predispose patients to an increased risk of coagulopathy.

## 1 INDICATIONS AND USAGE

### 1.1 Colorectal Cancer

- XELODA is indicated as a single agent for adjuvant treatment in patients with Dukes' C colon cancer who have undergone complete resection of the primary tumor when treatment with fluoropyrimidine therapy alone is preferred. XELODA was non-inferior to 5-fluorouracil and leucovorin (5-FU/LV) for disease-free survival (DFS). Physicians should consider results of combination chemotherapy trials, which have shown improvement in DFS and OS, when prescribing single-agent XELODA in the adjuvant treatment of Dukes' C colon cancer.
- XELODA is indicated as first-line treatment of patients with metastatic colorectal carcinoma when treatment with fluoropyrimidine therapy alone is preferred. Combination chemotherapy has shown a survival benefit compared to 5-FU/LV alone. A survival benefit over 5-FU/LV has not been demonstrated with XELODA monotherapy. Use of XELODA instead of 5-FU/LV in combinations has not been adequately studied to assure safety or preservation of the survival advantage.

### 1.2 Breast Cancer

- XELODA in combination with docetaxel is indicated for the treatment of patients with metastatic breast cancer after failure of prior anthracycline-containing chemotherapy.
- XELODA monotherapy is also indicated for the treatment of patients with metastatic breast cancer resistant to both paclitaxel and an anthracycline-containing chemotherapy regimen or resistant to paclitaxel and for whom further anthracycline therapy is not indicated (e.g., patients who have received cumulative doses of 400 mg/m<sup>2</sup> of doxorubicin or doxorubicin equivalents). Resistance is defined as progressive disease while on treatment, with or without an initial response, or relapse within 6 months of completing treatment with an anthracycline-containing adjuvant regimen.

## 2 DOSAGE AND ADMINISTRATION

XELODA tablets should be swallowed whole with water within 30 minutes after a meal. XELODA dose is calculated according to body surface area.

### 2.1 Standard Starting Dose

Monotherapy (Metastatic Colorectal Cancer, Adjuvant Colorectal Cancer, Metastatic Breast Cancer)

The recommended dose of XELODA is 1250 mg/m<sup>2</sup> administered orally twice daily (morning and evening; equivalent to 2500 mg/m<sup>2</sup> total daily dose) for 2 weeks followed by a 1-week rest period given as 3-week cycles (see **Table 1**).

Adjuvant treatment in patients with Dukes' C colon cancer is recommended for a total of 6 months [ie, XELODA 1250 mg/m<sup>2</sup> orally twice daily for 2 weeks followed by a 1-week rest period, given as 3-week cycles for a total of 8 cycles (24 weeks)].

**Table 1 XELODA Dose Calculation According to Body Surface Area**

Dose Level 1250 mg/m <sup>2</sup> Twice a Day		Number of Tablets to be Taken at Each Dose (Morning and Evening)	
Surface Area (m <sup>2</sup> )	Total Daily Dose* (mg)	150 mg	500 mg
≤ 1.25	3000	0	3
1.26-1.37	3300	1	3
1.38-1.51	3600	2	3
1.52-1.65	4000	0	4
1.66-1.77	4300	1	4
1.78-1.91	4600	2	4
1.92-2.05	5000	0	5
2.06-2.17	5300	1	5
≥ 2.18	5600	2	5

\*Total Daily Dose divided by 2 to allow equal morning and evening doses

#### In Combination With Docetaxel (Metastatic Breast Cancer)

In combination with docetaxel, the recommended dose of XELODA is 1250 mg/m<sup>2</sup> twice daily for 2 weeks followed by a 1-week rest period, combined with docetaxel at 75 mg/m<sup>2</sup> as a 1-hour intravenous infusion every 3 weeks. Pre-medication, according to the docetaxel labeling, should be started prior to docetaxel administration for patients receiving the XELODA plus docetaxel combination. **Table 1** displays the total daily dose of XELODA by body surface area and the number of tablets to be taken at each dose.

## 2.2 Dose Management Guidelines

### General

XELODA dosage may need to be individualized to optimize patient management. Patients should be carefully monitored for toxicity and doses of XELODA should be modified as necessary to accommodate individual patient tolerance to treatment [see *Clinical Studies (14)*]. Toxicity due to XELODA administration may be managed by symptomatic treatment, dose interruptions and adjustment of XELODA dose. Once the dose has been reduced, it should not be increased at a later time. Doses of XELODA omitted for toxicity are not replaced or restored; instead the patient should resume the planned treatment cycles.

The dose of phenytoin and the dose of coumarin-derivative anticoagulants may need to be reduced when either drug is administered concomitantly with XELODA [see *Drug Interactions (7.1)*].

### Monotherapy (Metastatic Colorectal Cancer, Adjuvant Colorectal Cancer, Metastatic Breast Cancer)

XELODA dose modification scheme as described below (see **Table 2**) is recommended for the management of adverse reactions.

**Table 2 Recommended Dose Modifications of XELODA**

Toxicity NCIC Grades*	During a Course of Therapy	Dose Adjustment for Next Treatment (% of starting dose)
Grade 1	Maintain dose level	Maintain dose level
Grade 2		
-1st appearance	Interrupt until resolved to grade 0-1	100%
-2nd appearance		75%
-3rd appearance		50%
-4th appearance	Discontinue treatment permanently	-
Grade 3		
-1st appearance	Interrupt until resolved to grade 0-1	75%
-2nd appearance		50%
-3rd appearance	Discontinue treatment permanently	-
Grade 4		
-1st appearance	Discontinue permanently OR If physician deems it to be in the patient's best interest to continue, interrupt until resolved to grade 0-1	50%

\*National Cancer Institute of Canada Common Toxicity Criteria were used except for the hand-and-foot syndrome [see Warnings and Precautions (5)].

### In Combination With Docetaxel (Metastatic Breast Cancer)

Dose modifications of XELODA for toxicity should be made according to **Table 2** above for XELODA. At the beginning of a treatment cycle, if a treatment delay is indicated for either XELODA or docetaxel, then administration of both agents should be delayed until the requirements for restarting both drugs are met.

The dose reduction schedule for docetaxel when used in combination with XELODA for the treatment of metastatic breast cancer is shown in **Table 3**.

**Table 3 Docetaxel Dose Reduction Schedule in Combination with XELODA**

Toxicity NCIC Grades*	Grade 2	Grade 3	Grade 4
1st appearance	Delay treatment until resolved to grade 0-1; Resume treatment with original dose of 75 mg/m <sup>2</sup> docetaxel	Delay treatment until resolved to grade 0-1; Resume treatment at 55 mg/m <sup>2</sup> of docetaxel.	Discontinue treatment with docetaxel
2nd appearance	Delay treatment until resolved to grade 0-1; Resume treatment at 55 mg/m <sup>2</sup> of docetaxel.	Discontinue treatment with docetaxel	-
3rd appearance	Discontinue treatment with docetaxel	-	-

\*National Cancer Institute of Canada Common Toxicity Criteria were used except for hand-and-foot syndrome [see Warnings and Precautions (5)].

## **2.3 Adjustment of Starting Dose in Special Populations**

### Renal Impairment

No adjustment to the starting dose of XELODA is recommended in patients with mild renal impairment (creatinine clearance = 51 to 80 mL/min [Cockcroft and Gault, as shown below]). In patients with moderate renal impairment (baseline creatinine clearance = 30 to 50 mL/min), a dose reduction to 75% of the XELODA

starting dose when used as monotherapy or in combination with docetaxel (from 1250 mg/m<sup>2</sup> to 950 mg/m<sup>2</sup> twice daily) is recommended [see *Use in Specific Populations (8.7) and Clinical Pharmacology (12.3)*]. Subsequent dose adjustment is recommended as outlined in **Table 2** and **Table 3** (depending on the regimen) if a patient develops a grade 2 to 4 adverse event [see *Warnings and Precautions (5.5)*]. The starting dose adjustment recommendations for patients with moderate renal impairment apply to both XELODA monotherapy and XELODA in combination use with docetaxel.

Cockcroft and Gault Equation:

$$(140 - \text{age [yrs]}) (\text{body wt [kg]})$$

Creatinine clearance for males = \_\_\_\_\_

$$(72) (\text{serum creatinine [mg/dL]})$$

Creatinine clearance for females = 0.85 x male value

### Geriatrics

Physicians should exercise caution in monitoring the effects of XELODA in the elderly. Insufficient data are available to provide a dosage recommendation.

## **3 DOSAGE FORMS AND STRENGTHS**

XELODA is supplied as biconvex, oblong film-coated tablets for oral administration. Each light peach-colored tablet contains 150 mg of capecitabine and each peach-colored tablet contains 500 mg of capecitabine.

## **4 CONTRAINDICATIONS**

### **4.1 Dihydropyrimidine Dehydrogenase (DPD) Deficiency**

XELODA is contraindicated in patients with known dihydropyrimidine dehydrogenase (DPD) deficiency.

### **4.2 Severe Renal Impairment**

XELODA is contraindicated in patients with severe renal impairment (creatinine clearance below 30 mL/min [Cockcroft and Gault]) [see *Use in Specific Populations (8.7) and Clinical Pharmacology (12.3)*].

### **4.3 Hypersensitivity**

XELODA is contraindicated in patients with known hypersensitivity to capecitabine or to any of its components. XELODA is contraindicated in patients who have a known hypersensitivity to 5-fluorouracil.

## **5 WARNINGS AND PRECAUTIONS**

### General

Patients receiving therapy with XELODA should be monitored by a physician experienced in the use of cancer chemotherapeutic agents. Most adverse reactions are reversible and do not need to result in discontinuation, although doses may need to be withheld or reduced [see *Dosage and Administration (2.2)*].

### **5.1 Diarrhea**

XELODA can induce diarrhea, sometimes severe. Patients with severe diarrhea should be carefully monitored and given fluid and electrolyte replacement if they become dehydrated. In 875 patients with either metastatic breast or colorectal cancer who received XELODA monotherapy, the median time to first occurrence of grade 2 to 4 diarrhea was 34 days (range from 1 to 369 days). The median duration of grade 3 to 4 diarrhea was 5 days. National Cancer Institute of Canada (NCIC) grade 2 diarrhea is defined as an increase of 4 to 6 stools/day or nocturnal stools, grade 3 diarrhea as an increase of 7 to 9 stools/day or incontinence and malabsorption, and grade 4 diarrhea as an increase of  $\geq 10$  stools/day or grossly bloody diarrhea or the need for parenteral support. If grade 2, 3 or 4 diarrhea occurs, administration of XELODA should be immediately interrupted until the diarrhea resolves or decreases in intensity to grade 1. Following a reoccurrence of grade 2 diarrhea or

occurrence of any grade 3 or 4 diarrhea, subsequent doses of XELODA should be decreased [*see Dosage and Administration (2.2)*]. Standard antidiarrheal treatments (eg, loperamide) are recommended.

Necrotizing enterocolitis (typhlitis) has been reported.

## **5.2 Coagulopathy**

Patients receiving concomitant capecitabine and oral coumarin-derivative anticoagulant therapy should have their anticoagulant response (INR or prothrombin time) monitored closely with great frequency and the anticoagulant dose should be adjusted accordingly [*see Boxed Warning and Drug Interactions (7.1)*].

## **5.3 Cardiotoxicity**

The cardiotoxicity observed with XELODA includes myocardial infarction/ischemia, angina, dysrhythmias, cardiac arrest, cardiac failure, sudden death, electrocardiographic changes, and cardiomyopathy. These adverse reactions may be more common in patients with a prior history of coronary artery disease.

## **5.4 Dihydropyrimidine Dehydrogenase Deficiency**

Rarely, unexpected, severe toxicity (eg, stomatitis, diarrhea, neutropenia and neurotoxicity) associated with 5-fluorouracil has been attributed to a deficiency of dihydropyrimidine dehydrogenase (DPD) activity. A link between decreased levels of DPD and increased, potentially fatal toxic effects of 5-fluorouracil therefore cannot be excluded.

## **5.5 Renal Insufficiency**

Patients with moderate renal impairment at baseline require dose reduction [*see Dosage and Administration (2.3)*]. Patients with mild and moderate renal impairment at baseline should be carefully monitored for adverse reactions. Prompt interruption of therapy with subsequent dose adjustments is recommended if a patient develops a grade 2 to 4 adverse event as outlined in **Table 2** [*see Dosage and Administration (2.2)*, *Use in Specific Populations (8.6)*, and *Clinical Pharmacology (12.3)*].

## **5.6 Pregnancy**

XELODA may cause fetal harm when given to a pregnant woman. Capecitabine caused embryoletality and teratogenicity in mice and embryoletality in monkeys when administered during organogenesis. If this drug is used during pregnancy, or if a patient becomes pregnant while receiving XELODA, the patient should be apprised of the potential hazard to the fetus [*see Use in Specific Populations (8.1)*].

## **5.7 Hand-and-Foot Syndrome**

Hand-and-foot syndrome (palmar-plantar erythrodysesthesia or chemotherapy-induced acral erythema) is a cutaneous toxicity. Median time to onset was 79 days (range from 11 to 360 days) with a severity range of grades 1 to 3 for patients receiving XELODA monotherapy in the metastatic setting. Grade 1 is characterized by any of the following: numbness, dysesthesia/paresthesia, tingling, painless swelling or erythema of the hands and/or feet and/or discomfort which does not disrupt normal activities. Grade 2 hand-and-foot syndrome is defined as painful erythema and swelling of the hands and/or feet and/or discomfort affecting the patient's activities of daily living. Grade 3 hand-and-foot syndrome is defined as moist desquamation, ulceration, blistering or severe pain of the hands and/or feet and/or severe discomfort that causes the patient to be unable to work or perform activities of daily living. If grade 2 or 3 hand-and-foot syndrome occurs, administration of XELODA should be interrupted until the event resolves or decreases in intensity to grade 1. Following grade 3 hand-and-foot syndrome, subsequent doses of XELODA should be decreased [*see Dosage and Administration (2.2)*].

## **5.8 Hyperbilirubinemia**

In 875 patients with either metastatic breast or colorectal cancer who received at least one dose of XELODA 1250 mg/m<sup>2</sup> twice daily as monotherapy for 2 weeks followed by a 1-week rest period, grade 3 (1.5-3 x ULN) hyperbilirubinemia occurred in 15.2% (n=133) of patients and grade 4 (>3 x ULN) hyperbilirubinemia occurred in 3.9% (n=34) of patients. Of 566 patients who had hepatic metastases at baseline and 309 patients without

hepatic metastases at baseline, grade 3 or 4 hyperbilirubinemia occurred in 22.8% and 12.3%, respectively. Of the 167 patients with grade 3 or 4 hyperbilirubinemia, 18.6% (n=31) also had postbaseline elevations (grades 1 to 4, without elevations at baseline) in alkaline phosphatase and 27.5% (n=46) had postbaseline elevations in transaminases at any time (not necessarily concurrent). The majority of these patients, 64.5% (n=20) and 71.7% (n=33), had liver metastases at baseline. In addition, 57.5% (n=96) and 35.3% (n=59) of the 167 patients had elevations (grades 1 to 4) at both prebaseline and postbaseline in alkaline phosphatase or transaminases, respectively. Only 7.8% (n=13) and 3.0% (n=5) had grade 3 or 4 elevations in alkaline phosphatase or transaminases.

In the 596 patients treated with XELODA as first-line therapy for metastatic colorectal cancer, the incidence of grade 3 or 4 hyperbilirubinemia was similar to the overall clinical trial safety database of XELODA monotherapy. The median time to onset for grade 3 or 4 hyperbilirubinemia in the colorectal cancer population was 64 days and median total bilirubin increased from 8  $\mu\text{m/L}$  at baseline to 13  $\mu\text{m/L}$  during treatment with XELODA. Of the 136 colorectal cancer patients with grade 3 or 4 hyperbilirubinemia, 49 patients had grade 3 or 4 hyperbilirubinemia as their last measured value, of which 46 had liver metastases at baseline.

In 251 patients with metastatic breast cancer who received a combination of XELODA and docetaxel, grade 3 (1.5 to 3 x ULN) hyperbilirubinemia occurred in 7% (n=17) and grade 4 (>3 x ULN) hyperbilirubinemia occurred in 2% (n=5).

If drug-related grade 3 to 4 elevations in bilirubin occur, administration of XELODA should be immediately interrupted until the hyperbilirubinemia decreases to  $\leq 3.0$  X ULN [see recommended dose modifications under *Dosage and Administration (2.2)*].

## **5.9 Hematologic**

In 875 patients with either metastatic breast or colorectal cancer who received a dose of 1250 mg/m<sup>2</sup> administered twice daily as monotherapy for 2 weeks followed by a 1-week rest period, 3.2%, 1.7%, and 2.4% of patients had grade 3 or 4 neutropenia, thrombocytopenia or decreases in hemoglobin, respectively. In 251 patients with metastatic breast cancer who received a dose of XELODA in combination with docetaxel, 68% had grade 3 or 4 neutropenia, 2.8% had grade 3 or 4 thrombocytopenia, and 9.6% had grade 3 or 4 anemia.

Patients with baseline neutrophil counts of  $<1.5 \times 10^9/\text{L}$  and/or thrombocyte counts of  $<100 \times 10^9/\text{L}$  should not be treated with XELODA. If unscheduled laboratory assessments during a treatment cycle show grade 3 or 4 hematologic toxicity, treatment with XELODA should be interrupted.

## **5.10 Geriatric Patients**

Patients  $\geq 80$  years old may experience a greater incidence of grade 3 or 4 adverse reactions. In 875 patients with either metastatic breast or colorectal cancer who received XELODA monotherapy, 62% of the 21 patients  $\geq 80$  years of age treated with XELODA experienced a treatment-related grade 3 or 4 adverse event: diarrhea in 6 (28.6%), nausea in 3 (14.3%), hand-and-foot syndrome in 3 (14.3%), and vomiting in 2 (9.5%) patients. Among the 10 patients 70 years of age and greater (no patients were  $>80$  years of age) treated with XELODA in combination with docetaxel, 30% (3 out of 10) of patients experienced grade 3 or 4 diarrhea and stomatitis, and 40% (4 out of 10) experienced grade 3 hand-and-foot syndrome.

Among the 67 patients  $\geq 60$  years of age receiving XELODA in combination with docetaxel, the incidence of grade 3 or 4 treatment-related adverse reactions, treatment-related serious adverse reactions, withdrawals due to adverse reactions, treatment discontinuations due to adverse reactions and treatment discontinuations within the first two treatment cycles was higher than in the  $<60$  years of age patient group.

In 995 patients receiving XELODA as adjuvant therapy for Dukes' C colon cancer after resection of the primary tumor, 41% of the 398 patients  $\geq 65$  years of age treated with XELODA experienced a treatment-related grade 3 or 4 adverse event: hand-and-foot syndrome in 75 (18.8%), diarrhea in 52 (13.1%), stomatitis in 12 (3.0%), neutropenia/granulocytopenia in 11 (2.8%), vomiting in 6 (1.5%), and nausea in 5 (1.3%) patients. In

patients  $\geq 65$  years of age (all randomized population; capecitabine 188 patients, 5-FU/LV 208 patients) treated for Dukes' C colon cancer after resection of the primary tumor, the hazard ratios for disease-free survival and overall survival for XELODA compared to 5-FU/LV were 1.01 (95% C.I. 0.80 – 1.27) and 1.04 (95% C.I. 0.79 – 1.37), respectively.

### 5.11 Hepatic Insufficiency

Patients with mild to moderate hepatic dysfunction due to liver metastases should be carefully monitored when XELODA is administered. The effect of severe hepatic dysfunction on the disposition of XELODA is not known [see *Use in Specific Populations (8.6) and Clinical Pharmacology (12.3)*].

### 5.12 Combination With Other Drugs

Use of XELODA in combination with irinotecan has not been adequately studied.

## 6 ADVERSE REACTIONS

Because clinical trials are conducted under widely varying conditions, adverse reaction rates observed in the clinical trials of a drug cannot be directly compared to rates in the clinical trials of another drug and may not reflect the rates observed in practice.

### 6.1 Adjuvant Colon Cancer

**Table 4** shows the adverse reactions occurring in  $\geq 5\%$  of patients from one phase 3 trial in patients with Dukes' C colon cancer who received at least one dose of study medication and had at least one safety assessment. A total of 995 patients were treated with 1250 mg/m<sup>2</sup> twice a day of XELODA administered for 2 weeks followed by a 1-week rest period, and 974 patients were administered 5-FU and leucovorin (20 mg/m<sup>2</sup> leucovorin IV followed by 425 mg/m<sup>2</sup> IV bolus 5-FU on days 1-5 every 28 days). The median duration of treatment was 164 days for capecitabine-treated patients and 145 days for 5-FU/LV-treated patients. A total of 112 (11%) and 73 (7%) capecitabine and 5-FU/LV-treated patients, respectively, discontinued treatment because of adverse reactions. A total of 18 deaths due to all causes occurred either on study or within 28 days of receiving study drug: 8 (0.8%) patients randomized to XELODA and 10 (1.0%) randomized to 5-FU/LV.

**Table 5** shows grade 3/4 laboratory abnormalities occurring in  $\geq 1\%$  of patients from one phase 3 trial in patients with Dukes' C colon cancer who received at least one dose of study medication and had at least one safety assessment.

**Table 4 Percent Incidence of Adverse Reactions Reported in  $\geq 5\%$  of Patients Treated With XELODA or 5-FU/LV for Colon Cancer in the Adjuvant Setting (Safety Population)**

	Adjuvant Treatment for Colon Cancer (N=1969)			
	XELODA (N=995)		5-FU/LV (N=974)	
Body System/ Adverse Event	All Grades	Grade 3/4	All Grades	Grade 3/4
<b><i>Gastrointestinal Disorders</i></b>				
Diarrhea	47	12	65	14
Nausea	34	2	47	2
Stomatitis	22	2	60	14
Vomiting	15	2	21	2
Abdominal Pain	14	3	16	2
Constipation	9	-	11	<1
Upper Abdominal Pain	7	<1	7	<1

	<b>Adjuvant Treatment for Colon Cancer (N=1969)</b>			
	<b>XELODA (N=995)</b>		<b>5-FU/LV (N=974)</b>	
<b>Body System/ Adverse Event</b>	<b>All Grades</b>	<b>Grade 3/4</b>	<b>All Grades</b>	<b>Grade 3/4</b>
Dyspepsia	6	<1	5	-
<b><i>Skin and Subcutaneous Tissue Disorders</i></b>				
Hand-and-Foot Syndrome	60	17	9	<1
Alopecia	6	-	22	<1
Rash	7	-	8	-
Erythema	6	1	5	<1
<b><i>General Disorders and Administration Site Conditions</i></b>				
Fatigue	16	<1	16	1
Pyrexia	7	<1	9	<1
Asthenia	10	<1	10	1
Lethargy	10	<1	9	<1
<b><i>Nervous System Disorders</i></b>				
Dizziness	6	<1	6	-
Headache	5	<1	6	<1
Dysgeusia	6	-	9	-
<b><i>Metabolism and Nutrition Disorders</i></b>				
Anorexia	9	<1	11	<1
<b><i>Eye Disorders</i></b>				
Conjunctivitis	5	<1	6	<1
<b><i>Blood and Lymphatic System Disorders</i></b>				
Neutropenia	2	<1	8	5
<b><i>Respiratory Thoracic and Mediastinal Disorders</i></b>				
Epistaxis	2	-	5	-

**Table 5 Percent Incidence of Grade 3/4 Laboratory Abnormalities Reported in  $\geq 1\%$  of Patients Receiving XELODA Monotherapy for Adjuvant Treatment of Colon Cancer (Safety Population)**

<b>Adverse Event</b>	<b>XELODA (n=995) Grade 3/4 %</b>	<b>IV 5-FU/LV (n=974) Grade 3/4 %</b>
Increased ALAT (SGPT)	1.6	0.6
Increased calcium	1.1	0.7
Decreased calcium	2.3	2.2
Decreased hemoglobin	1.0	1.2
Decreased lymphocytes	13.0	13.0
Decreased neutrophils*	2.2	26.2
Decreased neutrophils/granulocytes	2.4	26.4
Decreased platelets	1.0	0.7
Increased bilirubin**	20	6.3

\*The incidence of grade 3/4 white blood cell abnormalities was 1.3% in the XELODA arm and 4.9% in the IV 5-FU/LV arm.

\*\*It should be noted that grading was according to NCIC CTC Version 1 (May, 1994). In the NCIC-CTC Version 1, hyperbilirubinemia grade 3 indicates a bilirubin value of 1.5 to  $3.0 \times$  upper limit of normal (ULN) range, and grade 4 a value of  $> 3.0 \times$  ULN. The NCI CTC Version 2 and above define a grade 3 bilirubin value of  $>3.0$  to  $10.0 \times$  ULN, and grade 4 values  $>10.0 \times$  ULN.

## **6.2 Metastatic Colorectal Cancer**

### Monotherapy

**Table 6** shows the adverse reactions occurring in  $\geq 5\%$  of patients from pooling the two phase 3 trials in first line metastatic colorectal cancer. A total of 596 patients with metastatic colorectal cancer were treated with  $1250 \text{ mg/m}^2$  twice a day of XELODA administered for 2 weeks followed by a 1-week rest period, and 593 patients were administered 5-FU and leucovorin in the Mayo regimen ( $20 \text{ mg/m}^2$  leucovorin IV followed by  $425 \text{ mg/m}^2$  IV bolus 5-FU, on days 1-5, every 28 days). In the pooled colorectal database the median duration of treatment was 139 days for capecitabine-treated patients and 140 days for 5-FU/LV-treated patients. A total of 78 (13%) and 63 (11%) capecitabine and 5-FU/LV-treated patients, respectively, discontinued treatment because of adverse reactions/intercurrent illness. A total of 82 deaths due to all causes occurred either on study or within 28 days of receiving study drug: 50 (8.4%) patients randomized to XELODA and 32 (5.4%) randomized to 5-FU/LV.

**Table 6 Pooled Phase 3 Colorectal Trials: Percent Incidence of Adverse Reactions in ≥5% of Patients**

Adverse Event	XELODA (n=596)			5-FU/LV (n=593)		
	Total %	Grade 3 %	Grade 4 %	Total %	Grade 3 %	Grade 4 %
<b>Number of Patients With &gt; One Adverse Event</b>	96	52	9	94	45	9
<b>Body System/Adverse Event</b>						
<b>GI</b>						
Diarrhea	55	13	2	61	10	2
Nausea	43	4	–	51	3	<1
Vomiting	27	4	<1	30	4	<1
Stomatitis	25	2	<1	62	14	1
Abdominal Pain	35	9	<1	31	5	–
Gastrointestinal Motility Disorder	10	<1	–	7	<1	–
Constipation	14	1	<1	17	1	–
Oral Discomfort	10	–	–	10	–	–
Upper GI Inflammatory Disorders	8	<1	–	10	1	–
Gastrointestinal Hemorrhage	6	1	<1	3	1	–
Ileus	6	4	1	5	2	1
<b>Skin and Subcutaneous</b>						
Hand-and-Foot Syndrome	54	17	NA	6	1	NA
Dermatitis	27	1	–	26	1	–
Skin Discoloration	7	<1	–	5	–	–
Alopecia	6	–	–	21	<1	–
<b>General</b>						
Fatigue/Weakness	42	4	–	46	4	–
Pyrexia	18	1	–	21	2	–
Edema	15	1	–	9	1	–
Pain	12	1	–	10	1	–
Chest Pain	6	1	–	6	1	<1
<b>Neurological</b>						
Peripheral Sensory Neuropathy	10	–	–	4	–	–
Headache	10	1	–	7	–	–
Dizziness*	8	<1	–	8	<1	–
Insomnia	7	–	–	7	–	–
Taste Disturbance	6	1	–	11	<1	1
<b>Metabolism</b>						
Appetite Decreased	26	3	<1	31	2	<1
Dehydration	7	2	<1	8	3	1
<b>Eye</b>						
Eye Irritation	13	–	–	10	<1	–
Vision Abnormal	5	–	–	2	–	–

Adverse Event	XELODA (n=596)			5-FU/LV (n=593)		
	Total %	Grade 3 %	Grade 4 %	Total %	Grade 3 %	Grade 4 %
<b>Respiratory</b>						
Dyspnea	14	1	–	10	<1	1
Cough	7	<1	1	8	–	–
Pharyngeal Disorder	5	–	–	5	–	–
Epistaxis	3	<1	–	6	–	–
Sore Throat	2	–	–	6	–	–
<b>Musculoskeletal</b>						
Back Pain	10	2	–	9	<1	–
Arthralgia	8	1	–	6	1	–
<b>Vascular</b>						
Venous Thrombosis	8	3	<1	6	2	–
<b>Psychiatric</b>						
Mood Alteration	5	–	–	6	<1	–
Depression	5	–	–	4	<1	–
<b>Infections</b>						
Viral	5	<1	–	5	<1	–
<b>Blood and Lymphatic</b>						
Anemia	80	2	<1	79	1	<1
Neutropenia	13	1	2	46	8	13
<b>Hepatobiliary</b>						
Hyperbilirubinemia	48	18	5	17	3	3

– Not observed

\* Excluding vertigo

NA = Not Applicable

### 6.3 Breast Cancer

#### In Combination with Docetaxel

The following data are shown for the combination study with XELODA and docetaxel in patients with metastatic breast cancer in **Table 7** and **Table 8**. In the XELODA and docetaxel combination arm the treatment was XELODA administered orally 1250 mg/m<sup>2</sup> twice daily as intermittent therapy (2 weeks of treatment followed by 1 week without treatment) for at least 6 weeks and docetaxel administered as a 1-hour intravenous infusion at a dose of 75 mg/m<sup>2</sup> on the first day of each 3-week cycle for at least 6 weeks. In the monotherapy arm docetaxel was administered as a 1-hour intravenous infusion at a dose of 100 mg/m<sup>2</sup> on the first day of each 3-week cycle for at least 6 weeks. The mean duration of treatment was 129 days in the combination arm and 98 days in the monotherapy arm. A total of 66 patients (26%) in the combination arm and 49 (19%) in the monotherapy arm withdrew from the study because of adverse reactions. The percentage of patients requiring dose reductions due to adverse reactions was 65% in the combination arm and 36% in the monotherapy arm. The percentage of patients requiring treatment interruptions due to adverse reactions in the combination arm was 79%. Treatment interruptions were part of the dose modification scheme for the combination therapy arm but not for the docetaxel monotherapy-treated patients.

**Table 7 Percent Incidence of Adverse Events Considered Related or Unrelated to Treatment in ≥5% of Patients Participating**

**in the XELODA and Docetaxel Combination vs Docetaxel  
Monotherapy Study**

Adverse Event	XELODA 1250 mg/m <sup>2</sup> /bid With Docetaxel 75 mg/m <sup>2</sup> /3 weeks (n=251)			Docetaxel 100 mg/m <sup>2</sup> /3 weeks (n=255)		
	Total %	Grade 3 %	Grade 4 %	Total %	Grade 3 %	Grade 4 %
<b>Number of Patients With at Least One Adverse Event</b>	99	76.5	29.1	97	57.6	31.8
<b>Body System/Adverse Event</b>						
<b><i>GI</i></b>						
Diarrhea	67	14	<1	48	5	<1
Stomatitis	67	17	<1	43	5	–
Nausea	45	7	–	36	2	–
Vomiting	35	4	1	24	2	–
Constipation	20	2	–	18	–	–
Abdominal Pain	30	<3	<1	24	2	–
Dyspepsia	14	–	–	8	1	–
Dry Mouth	6	<1	–	5	–	–
<b><i>Skin and Subcutaneous</i></b>						
Hand-and-Foot Syndrome	63	24	NA	8	1	NA
Alopecia	41	6	–	42	7	–
Nail Disorder	14	2	–	15	–	–
Dermatitis	8	–	–	11	1	–
Rash Erythematous	9	<1	–	5	–	–
Nail Discoloration	6	–	–	4	<1	–
Onycholysis	5	1	–	5	1	–
Pruritus	4	–	–	5	–	–
<b><i>General</i></b>						
Pyrexia	28	2	–	34	2	–
Asthenia	26	4	<1	25	6	–
Fatigue	22	4	–	27	6	–
Weakness	16	2	–	11	2	–
Pain in Limb	13	<1	–	13	2	–
Lethargy	7	–	–	6	2	–
Pain	7	<1	–	5	1	–
Chest Pain (non-cardiac)	4	<1	–	6	2	–
Influenza-like Illness	5	–	–	5	–	–
<b><i>Neurological</i></b>						
Taste Disturbance	16	<1	–	14	<1	–
Headache	15	3	–	15	2	–
Paresthesia	12	<1	–	16	1	–
Dizziness	12	–	–	8	<1	–
Insomnia	8	–	–	10	<1	–
Peripheral Neuropathy	6	–	–	10	1	–
Hypoaesthesia	4	<1	–	8	<1	–

Adverse Event	XELODA 1250 mg/m <sup>2</sup> /bid With Docetaxel 75 mg/m <sup>2</sup> /3 weeks (n=251)			Docetaxel 100 mg/m <sup>2</sup> /3 weeks (n=255)		
	Total %	Grade 3 %	Grade 4 %	Total %	Grade 3 %	Grade 4 %
<b>Metabolism</b>						
Anorexia	13	1	–	11	<1	–
Appetite Decreased	10	–	–	5	–	–
Weight Decreased	7	–	–	5	–	–
Dehydration	10	2	–	7	<1	<1
<b>Eye</b>						
Lacrimation Increased	12	–	–	7	<1	–
Conjunctivitis	5	–	–	4	–	–
Eye Irritation	5	–	–	1	–	–
<b>Musculoskeletal</b>						
Arthralgia	15	2	–	24	3	–
Myalgia	15	2	–	25	2	–
Back Pain	12	<1	–	11	3	–
Bone Pain	8	<1	–	10	2	–
<b>Cardiac</b>						
Edema	33	<2	–	34	<3	1
<b>Blood</b>						
Neutropenic Fever	16	3	13	21	5	16
<b>Respiratory</b>						
Dyspnea	14	2	<1	16	2	–
Cough	13	1	–	22	<1	–
Sore Throat	12	2	–	11	<1	–
Epistaxis	7	<1	–	6	–	–
Rhinorrhea	5	–	–	3	–	–
Pleural Effusion	2	1	–	7	4	–
<b>Infection</b>						
Oral Candidiasis	7	<1	–	8	<1	–
Urinary Tract Infection	6	<1	–	4	–	–
Upper Respiratory Tract	4	–	–	5	1	–
<b>Vascular</b>						
Flushing	5	–	–	5	–	–
Lymphoedema	3	<1	–	5	1	–

Adverse Event	XELODA 1250 mg/m <sup>2</sup> /bid With Docetaxel 75 mg/m <sup>2</sup> /3 weeks (n=251)			Docetaxel 100 mg/m <sup>2</sup> /3 weeks  (n=255)		
	Total %	Grade 3 %	Grade 4 %	Total %	Grade 3 %	Grade 4 %
<i>Psychiatric</i> Depression	5	–	–	5	1	–

– Not observed

NA = Not Applicable

**Table 8 Percent of Patients With Laboratory Abnormalities Participating in the XELODA and Docetaxel Combination vs Docetaxel Monotherapy Study**

Adverse Event	XELODA 1250 mg/m <sup>2</sup> /bid With Docetaxel 75 mg/m <sup>2</sup> /3 weeks (n=251)			Docetaxel 100 mg/m <sup>2</sup> /3 weeks  (n=255)		
	Total %	Grade 3 %	Grade 4 %	Total %	Grade 3 %	Grade 4 %
<i>Hematologic</i>						
Leukopenia	91	37	24	88	42	33
Neutropenia/Granulocytopenia	86	20	49	87	10	66
Thrombocytopenia	41	2	1	23	1	2
Anemia	80	7	3	83	5	<1
Lymphocytopenia	99	48	41	98	44	40
<i>Hepatobiliary</i>						
Hyperbilirubinemia	20	7	2	6	2	2

#### Monotherapy

The following data are shown for the study in stage IV breast cancer patients who received a dose of 1250 mg/m<sup>2</sup> administered twice daily for 2 weeks followed by a 1-week rest period. The mean duration of treatment was 114 days. A total of 13 out of 162 patients (8%) discontinued treatment because of adverse reactions/intercurrent illness.

**Table 9 Percent Incidence of Adverse Reactions Considered Remotely, Possibly or Probably Related to Treatment in ≥5% of Patients Participating in the Single Arm Trial in Stage IV Breast Cancer**

Adverse Event	Phase 2 Trial in Stage IV Breast Cancer (n=162)		
	Total %	Grade 3 %	Grade 4 %
<i>GI</i>			
Diarrhea	57	12	3
Nausea	53	4	–
Vomiting	37	4	–
Stomatitis	24	7	–
Abdominal Pain	20	4	–
Constipation	15	1	–
Dyspepsia	8	–	–

Adverse Event	Phase 2 Trial in Stage IV Breast Cancer (n=162)		
	Body System/Adverse Event	Total %	Grade 3 %
<b><i>Skin and Subcutaneous</i></b>			
Hand-and-Foot Syndrome	57	11	NA
Dermatitis	37	1	–
Nail Disorder	7	–	–
<b><i>General</i></b>			
Fatigue	41	8	–
Pyrexia	12	1	–
Pain in Limb	6	1	–
<b><i>Neurological</i></b>			
Paresthesia	21	1	–
Headache	9	1	–
Dizziness	8	–	–
Insomnia	8	–	–
<b><i>Metabolism</i></b>			
Anorexia	23	3	–
Dehydration	7	4	1
<b><i>Eye</i></b>			
Eye Irritation	15	–	–
<b><i>Musculoskeletal</i></b>			
Myalgia	9	–	–
<b><i>Cardiac</i></b>			
Edema	9	1	–
<b><i>Blood</i></b>			
Neutropenia	26	2	2
Thrombocytopenia	24	3	1
Anemia	72	3	1
Lymphopenia	94	44	15
<b><i>Hepatobiliary</i></b>			
Hyperbilirubinemia	22	9	2

– Not observed

NA = Not Applicable

#### 6.4 Clinically Relevant Adverse Events in <5% of Patients

Clinically relevant adverse events reported in <5% of patients treated with XELODA either as monotherapy or in combination with docetaxol that were considered at least remotely related to treatment are shown below; occurrences of each grade 3 and 4 adverse event are provided in parentheses.

##### Monotherapy (Metastatic Colorectal Cancer, Adjuvant Colorectal Cancer, Metastatic Breast Cancer)

*Gastrointestinal:* abdominal distension, dysphagia, proctalgia, ascites (0.1%), gastric ulcer (0.1%), ileus (0.3%), toxic dilation of intestine, gastroenteritis (0.1%)

*Skin & Subcutan.:* nail disorder (0.1%), sweating increased (0.1%), photosensitivity reaction (0.1%), skin ulceration, pruritus, radiation recall syndrome (0.2%)

<i>General:</i>	chest pain (0.2%), influenza-like illness, hot flushes, pain (0.1%), hoarseness, irritability, difficulty in walking, thirst, chest mass, collapse, fibrosis (0.1%), hemorrhage, edema, sedation
<i>Neurological:</i>	insomnia, ataxia (0.5%), tremor, dysphasia, encephalopathy (0.1%), abnormal coordination, dysarthria, loss of consciousness (0.2%), impaired balance
<i>Metabolism:</i>	increased weight, cachexia (0.4%), hypertriglyceridemia (0.1%), hypokalemia, hypomagnesemia
<i>Eye:</i>	conjunctivitis
<i>Respiratory:</i>	cough (0.1%), epistaxis (0.1%), asthma (0.2%), hemoptysis, respiratory distress (0.1%), dyspnea
<i>Cardiac:</i>	tachycardia (0.1%), bradycardia, atrial fibrillation, ventricular extrasystoles, extrasystoles, myocarditis (0.1%), pericardial effusion
<i>Infections:</i>	laryngitis (1.0%), bronchitis (0.2%), pneumonia (0.2%), bronchopneumonia (0.2%), keratoconjunctivitis, sepsis (0.3%), fungal infections (including candidiasis) (0.2%)
<i>Musculoskeletal:</i>	myalgia, bone pain (0.1%), arthritis (0.1%), muscle weakness
<i>Blood &amp; Lymphatic:</i>	leukopenia (0.2%), coagulation disorder (0.1%), bone marrow depression (0.1%), idiopathic thrombocytopenia purpura (1.0%), pancytopenia (0.1%)
<i>Vascular:</i>	hypotension (0.2%), hypertension (0.1%), lymphoedema (0.1%), pulmonary embolism (0.2%), cerebrovascular accident (0.1%)
<i>Psychiatric:</i>	depression, confusion (0.1%)
<i>Renal:</i>	renal impairment (0.6%)
<i>Ear:</i>	vertigo
<i>Hepatobiliary:</i>	hepatic fibrosis (0.1%), hepatitis (0.1%), cholestatic hepatitis (0.1%), abnormal liver function tests
<i>Immune System:</i>	drug hypersensitivity (0.1%)
<i>Postmarketing:</i>	hepatic failure, lacrimal duct stenosis

#### XELODA In Combination With Docetaxel (Metastatic Breast Cancer)

<i>Gastrointestinal:</i>	ileus (0.4%), necrotizing enterocolitis (0.4%), esophageal ulcer (0.4%), hemorrhagic diarrhea (0.8%)
<i>Neurological:</i>	ataxia (0.4%), syncope (1.2%), taste loss (0.8%), polyneuropathy (0.4%), migraine (0.4%)
<i>Cardiac:</i>	supraventricular tachycardia (0.4%)
<i>Infection:</i>	neutropenic sepsis (2.4%), sepsis (0.4%), bronchopneumonia (0.4%)
<i>Blood &amp; Lymphatic:</i>	agranulocytosis (0.4%), prothrombin decreased (0.4%)
<i>Vascular:</i>	hypotension (1.2%), venous phlebitis and thrombophlebitis (0.4%), postural hypotension (0.8%)
<i>Renal:</i>	renal failure (0.4%)
<i>Hepatobiliary:</i>	jaundice (0.4%), abnormal liver function tests (0.4%), hepatic failure (0.4%), hepatic coma (0.4%), hepatotoxicity (0.4%)
<i>Immune System:</i>	hypersensitivity (1.2%)

## **7 DRUG INTERACTIONS**

### **7.1 Drug-Drug Interactions**

#### Anticoagulants

Altered coagulation parameters and/or bleeding have been reported in patients taking XELODA concomitantly with coumarin-derivative anticoagulants such as warfarin and phenprocoumon [see *Boxed Warning*]. These events occurred within several days and up to several months after initiating XELODA therapy and, in a few cases, within 1 month after stopping XELODA. These events occurred in patients with and without liver metastases. In a drug interaction study with single-dose warfarin administration, there was a significant increase in the mean AUC of S-warfarin [see *Clinical Pharmacology (12.3)*]. The maximum observed INR value

increased by 91%. This interaction is probably due to an inhibition of cytochrome P450 2C9 by capecitabine and/or its metabolites.

### Phenytoin

The level of phenytoin should be carefully monitored in patients taking XELODA and phenytoin dose may need to be reduced [see *Dosage and Administration (2.2)*]. Postmarketing reports indicate that some patients receiving XELODA and phenytoin had toxicity associated with elevated phenytoin levels. Formal drug-drug interaction studies with phenytoin have not been conducted, but the mechanism of interaction is presumed to be inhibition of the CYP2C9 isoenzyme by capecitabine and/or its metabolites.

### Leucovorin

The concentration of 5-fluorouracil is increased and its toxicity may be enhanced by leucovorin. Deaths from severe enterocolitis, diarrhea, and dehydration have been reported in elderly patients receiving weekly leucovorin and fluorouracil.

### CYP2C9 substrates

Other than warfarin, no formal drug-drug interaction studies between XELODA and other CYP2C9 substrates have been conducted. Care should be exercised when XELODA is coadministered with CYP2C9 substrates.

## **7.2 Drug-Food Interaction**

Food was shown to reduce both the rate and extent of absorption of capecitabine [see *Clinical Pharmacology (12.3)*]. In all clinical trials, patients were instructed to administer XELODA within 30 minutes after a meal. It is recommended that XELODA be administered with food [see *Dosage and Administration (2)*].

## **8 USE IN SPECIFIC POPULATIONS**

### **8.1 Pregnancy: Category D**

XELODA can cause fetal harm when administered to a pregnant woman. Capecitabine at doses of 198 mg/kg/day during organogenesis caused malformations and embryo death in mice. In separate pharmacokinetic studies, this dose in mice produced 5'-DFUR AUC values about 0.2 times the corresponding values in patients administered the recommended daily dose. Malformations in mice included cleft palate, anophthalmia, microphthalmia, oligodactyly, polydactyly, syndactyly, kinky tail and dilation of cerebral ventricles. At doses of 90 mg/kg/day, capecitabine given to pregnant monkeys during organogenesis caused fetal death. This dose produced 5'-DFUR AUC values about 0.6 times the corresponding values in patients administered the recommended daily dose.

There are no adequate and well controlled studies of XELODA in pregnant women. If this drug is used during pregnancy, or if a patient becomes pregnant while receiving XELODA, the patient should be apprised of the potential hazard to the fetus. Women should be advised to avoid becoming pregnant while receiving treatment with XELODA [see *Warnings and Precautions (5.6)*].

### **8.3 Nursing Mothers**

Lactating mice given a single oral dose of capecitabine excreted significant amounts of capecitabine metabolites into the milk. It is not known whether this drug is excreted in human milk. Because many drugs are excreted in human milk and because of the potential for serious adverse reactions in nursing infants from capecitabine, a decision should be made whether to discontinue nursing or to discontinue the drug, taking into account the importance of the drug to the mother.

### **8.4 Pediatric Use**

The safety and effectiveness of XELODA in persons <18 years of age have not been established.

## 8.5 Geriatric Use

Physicians should pay particular attention to monitoring the adverse effects of XELODA in the elderly [see *Warnings and Precautions* (5.11)].

## 8.6 Hepatic Insufficiency

Exercise caution when patients with mild to moderate hepatic dysfunction due to liver metastases are treated with XELODA. The effect of severe hepatic dysfunction on XELODA is not known [see *Warnings and Precautions* (5.12) and *Clinical Pharmacology* (12.3)].

## 8.7 Renal Insufficiency

Patients with moderate (creatinine clearance = 30 to 50 mL/min) and severe (creatinine clearance <30 mL/min) renal impairment showed higher exposure for capecitabine, 5-FDUR, and FBAL than in those with normal renal function [see *Contraindications* (4.2), *Warnings and Precautions* (5.5), *Dosage and Administration* (2.3), and *Clinical Pharmacology* (12.3)].

## 10 OVERDOSAGE

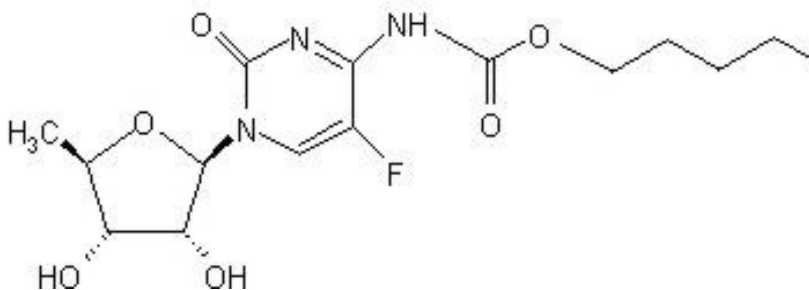
The manifestations of acute overdose would include nausea, vomiting, diarrhea, gastrointestinal irritation and bleeding, and bone marrow depression. Medical management of overdose should include customary supportive medical interventions aimed at correcting the presenting clinical manifestations. Although no clinical experience using dialysis as a treatment for XELODA overdose has been reported, dialysis may be of benefit in reducing circulating concentrations of 5'-DFUR, a low-molecular-weight metabolite of the parent compound.

Single doses of XELODA were not lethal to mice, rats, and monkeys at doses up to 2000 mg/kg (2.4, 4.8, and 9.6 times the recommended human daily dose on a mg/m<sup>2</sup> basis).

## 11 DESCRIPTION

XELODA (capecitabine) is a fluoropyrimidine carbamate with antineoplastic activity. It is an orally administered systemic prodrug of 5'-deoxy-5-fluorouridine (5'-DFUR) which is converted to 5-fluorouracil.

The chemical name for capecitabine is 5'-deoxy-5-fluoro-N-[(pentyloxy) carbonyl]-cytidine and has a molecular weight of 359.35. Capecitabine has the following structural formula:



Capecitabine is a white to off-white crystalline powder with an aqueous solubility of 26 mg/mL at 20°C.

XELODA is supplied as biconvex, oblong film-coated tablets for oral administration. Each light peach-colored tablet contains 150 mg capecitabine and each peach-colored tablet contains 500 mg capecitabine. The inactive ingredients in XELODA include: anhydrous lactose, croscarmellose sodium, hydroxypropyl methylcellulose, microcrystalline cellulose, magnesium stearate and purified water. The peach or light peach film coating contains hydroxypropyl methylcellulose, talc, titanium dioxide, and synthetic yellow and red iron oxides.

## 12 CLINICAL PHARMACOLOGY

### 12.1 Mechanism of Action

Enzymes convert capecitabine to 5-fluorouracil (5-FU) *in vivo*. Both normal and tumor cells metabolize 5-FU to 5-fluoro-2'-deoxyuridine monophosphate (FdUMP) and 5-fluorouridine triphosphate (FUTP). These

metabolites cause cell injury by two different mechanisms. First, FdUMP and the folate cofactor, N<sup>5-10</sup>-methylene tetrahydrofolate, bind to thymidylate synthase (TS) to form a covalently bound ternary complex. This binding inhibits the formation of thymidylate from 2'-deoxyuridylate. Thymidylate is the necessary precursor of thymidine triphosphate, which is essential for the synthesis of DNA, so that a deficiency of this compound can inhibit cell division. Second, nuclear transcriptional enzymes can mistakenly incorporate FUTP in place of uridine triphosphate (UTP) during the synthesis of RNA. This metabolic error can interfere with RNA processing and protein synthesis.

### **12.3 Pharmacokinetics**

#### ***Absorption***

Following oral administration of 1255 mg/m<sup>2</sup> BID to cancer patients, capecitabine reached peak blood levels in about 1.5 hours (T<sub>max</sub>) with peak 5-FU levels occurring slightly later, at 2 hours. Food reduced both the rate and extent of absorption of capecitabine with mean C<sub>max</sub> and AUC<sub>0-∞</sub> decreased by 60% and 35%, respectively. The C<sub>max</sub> and AUC<sub>0-∞</sub> of 5-FU were also reduced by food by 43% and 21%, respectively. Food delayed T<sub>max</sub> of both parent and 5-FU by 1.5 hours [*see Warnings and Precautions (5), Dosage and Administration (2), and Drug-Food Interaction (7.2)*].

The pharmacokinetics of XELODA and its metabolites have been evaluated in about 200 cancer patients over a dosage range of 500 to 3500 mg/m<sup>2</sup>/day. Over this range, the pharmacokinetics of XELODA and its metabolite, 5'-DFCR were dose proportional and did not change over time. The increases in the AUCs of 5'-DFUR and 5-FU, however, were greater than proportional to the increase in dose and the AUC of 5-FU was 34% higher on day 14 than on day 1. The interpatient variability in the C<sub>max</sub> and AUC of 5-FU was greater than 85%.

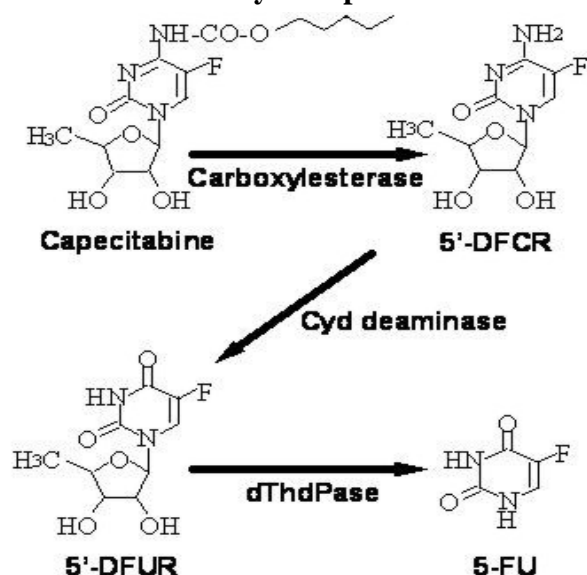
#### ***Distribution***

Plasma protein binding of capecitabine and its metabolites is less than 60% and is not concentration-dependent. Capecitabine was primarily bound to human albumin (approximately 35%). XELODA has a low potential for pharmacokinetic interactions related to plasma protein binding.

#### ***Bioactivation and Metabolism***

Capecitabine is extensively metabolized enzymatically to 5-FU. In the liver, a 60 kDa carboxylesterase hydrolyzes much of the compound to 5'-deoxy-5-fluorocytidine (5'-DFCR). Cytidine deaminase, an enzyme found in most tissues, including tumors, subsequently converts 5'-DFCR to 5'-DFUR. The enzyme, thymidine phosphorylase (dThdPase), then hydrolyzes 5'-DFUR to the active drug 5-FU. Many tissues throughout the body express thymidine phosphorylase. Some human carcinomas express this enzyme in higher concentrations than surrounding normal tissues. Following oral administration of XELODA 7 days before surgery in patients with colorectal cancer, the median ratio of 5-FU concentration in colorectal tumors to adjacent tissues was 2.9 (range from 0.9 to 8.0). These ratios have not been evaluated in breast cancer patients or compared to 5-FU infusion.

## Metabolic Pathway of capecitabine to 5-FU



The enzyme dihydropyrimidine dehydrogenase hydrogenates 5-FU, the product of capecitabine metabolism, to the much less toxic 5-fluoro-5, 6-dihydro-fluorouracil (FUH<sub>2</sub>). Dihydropyrimidinase cleaves the pyrimidine ring to yield 5-fluoro-ureido-propionic acid (FUPA). Finally, β-ureido-propionase cleaves FUPA to α-fluoro-β-alanine (FBAL) which is cleared in the urine.

In vitro enzymatic studies with human liver microsomes indicated that capecitabine and its metabolites (5'-DFUR, 5'-DFCR, 5-FU, and FBAL) did not inhibit the metabolism of test substrates by cytochrome P450 isoenzymes 1A2, 2A6, 3A4, 2C19, 2D6, and 2E1.

### Excretion

Capecitabine and its metabolites are predominantly excreted in urine; 95.5% of administered capecitabine dose is recovered in urine. Fecal excretion is minimal (2.6%). The major metabolite excreted in urine is FBAL which represents 57% of the administered dose. About 3% of the administered dose is excreted in urine as unchanged drug. The elimination half-life of both parent capecitabine and 5-FU was about 0.75 hour.

### Effect of Age, Gender, and Race on the Pharmacokinetics of Capecitabine

A population analysis of pooled data from the two large controlled studies in patients with metastatic colorectal cancer (n=505) who were administered XELODA at 1250 mg/m<sup>2</sup> twice a day indicated that gender (202 females and 303 males) and race (455 white/Caucasian patients, 22 black patients, and 28 patients of other race) have no influence on the pharmacokinetics of 5'-DFUR, 5-FU and FBAL. Age has no significant influence on the pharmacokinetics of 5'-DFUR and 5-FU over the range of 27 to 86 years. A 20% increase in age results in a 15% increase in AUC of FBAL [see *Warnings and Precautions (5.11) and Dosage and Administration (2.3)*].

Following oral administration of 825 mg/m<sup>2</sup> capecitabine twice daily for 14 days, Japanese patients (n=18) had about 36% lower C<sub>max</sub> and 24% lower AUC for capecitabine than the Caucasian patients (n=22). Japanese patients had also about 25% lower C<sub>max</sub> and 34% lower AUC for FBAL than the Caucasian patients. The clinical significance of these differences is unknown. No significant differences occurred in the exposure to other metabolites (5'-DFCR, 5'-DFUR, and 5-FU).

### Effect of Hepatic Insufficiency

XELODA has been evaluated in 13 patients with mild to moderate hepatic dysfunction due to liver metastases defined by a composite score including bilirubin, AST/ALT and alkaline phosphatase following a single 1255 mg/m<sup>2</sup> dose of XELODA. Both AUC<sub>0-∞</sub> and C<sub>max</sub> of capecitabine increased by 60% in patients with hepatic dysfunction compared to patients with normal hepatic function (n=14). The AUC<sub>0-∞</sub> and C<sub>max</sub> of 5-FU were not

affected. In patients with mild to moderate hepatic dysfunction due to liver metastases, caution should be exercised when XELODA is administered. The effect of severe hepatic dysfunction on XELODA is not known [see *Warnings and Precautions* (5.11) and *Use in Special Populations* (8.6)].

### ***Effect of Renal Insufficiency***

Following oral administration of 1250 mg/m<sup>2</sup> capecitabine twice a day to cancer patients with varying degrees of renal impairment, patients with moderate (creatinine clearance = 30 to 50 mL/min) and severe (creatinine clearance <30 mL/min) renal impairment showed 85% and 258% higher systemic exposure to FBAL on day 1 compared to normal renal function patients (creatinine clearance >80 mL/min). Systemic exposure to 5'-DFUR was 42% and 71% greater in moderately and severely renal impaired patients, respectively, than in normal patients. Systemic exposure to capecitabine was about 25% greater in both moderately and severely renal impaired patients [see *Dosage and Administration* (2.3), *Contraindications* (4.2), *Warnings and Precautions* (5.5), and *Use in Special Populations* (8.7)].

### ***Effect of Capecitabine on the Pharmacokinetics of Warfarin***

In four patients with cancer, chronic administration of capecitabine (1250 mg/m<sup>2</sup> bid) with a single 20 mg dose of warfarin increased the mean AUC of S-warfarin by 57% and decreased its clearance by 37%. Baseline corrected AUC of INR in these 4 patients increased by 2.8-fold, and the maximum observed mean INR value was increased by 91% [see *Boxed Warning and Drug Interactions* (7.1)].

### ***Effect of Antacids on the Pharmacokinetics of Capecitabine***

When Maalox® (20 mL), an aluminum hydroxide- and magnesium hydroxide-containing antacid, was administered immediately after XELODA (1250 mg/m<sup>2</sup>, n=12 cancer patients), AUC and C<sub>max</sub> increased by 16% and 35%, respectively, for capecitabine and by 18% and 22%, respectively, for 5'-DFUR. No effect was observed on the other three major metabolites (5'-DFUR, 5-FU, FBAL) of XELODA.

### ***Effect of Capecitabine on the Pharmacokinetics of Docetaxel and Vice Versa***

A Phase 1 study evaluated the effect of XELODA on the pharmacokinetics of docetaxel (Taxotere®) and the effect of docetaxel on the pharmacokinetics of XELODA was conducted in 26 patients with solid tumors. XELODA was found to have no effect on the pharmacokinetics of docetaxel (C<sub>max</sub> and AUC) and docetaxel has no effect on the pharmacokinetics of capecitabine and the 5-FU precursor 5'-DFUR.

## **13 NONCLINICAL TOXICOLOGY**

### **13.1 Carcinogenesis, Mutagenesis, Impairment of Fertility**

Adequate studies investigating the carcinogenic potential of XELODA have not been conducted. Capecitabine was not mutagenic *in vitro* to bacteria (Ames test) or mammalian cells (Chinese hamster V79/HPRT gene mutation assay). Capecitabine was clastogenic *in vitro* to human peripheral blood lymphocytes but not clastogenic *in vivo* to mouse bone marrow (micronucleus test). Fluorouracil causes mutations in bacteria and yeast. Fluorouracil also causes chromosomal abnormalities in the mouse micronucleus test *in vivo*.

#### **Impairment of Fertility**

In studies of fertility and general reproductive performance in female mice, oral capecitabine doses of 760 mg/kg/day (about 2300 mg/m<sup>2</sup>/day) disturbed estrus and consequently caused a decrease in fertility. In mice that became pregnant, no fetuses survived this dose. The disturbance in estrus was reversible. In males, this dose caused degenerative changes in the testes, including decreases in the number of spermatocytes and spermatids. In separate pharmacokinetic studies, this dose in mice produced 5'-DFUR AUC values about 0.7 times the corresponding values in patients administered the recommended daily dose.

## 14 CLINICAL STUDIES

### 14.1 Adjuvant Colon Cancer

A multicenter randomized, controlled phase 3 clinical trial in patients with Dukes' C colon cancer (X-ACT) provided data concerning the use of XELODA for the adjuvant treatment of patients with colon cancer. The primary objective of the study was to compare disease-free survival (DFS) in patients receiving XELODA to those receiving IV 5-FU/LV alone. In this trial, 1987 patients were randomized either to treatment with XELODA 1250 mg/m<sup>2</sup> orally twice daily for 2 weeks followed by a 1-week rest period, given as 3-week cycles for a total of 8 cycles (24 weeks) or IV bolus 5-FU 425 mg/m<sup>2</sup> and 20 mg/m<sup>2</sup> IV leucovorin on days 1 to 5, given as 4-week cycles for a total of 6 cycles (24 weeks). Patients in the study were required to be between 18 and 75 years of age with histologically-confirmed Dukes' stage C colon cancer with at least one positive lymph node and to have undergone (within 8 weeks prior to randomization) complete resection of the primary tumor without macroscopic or microscopic evidence of remaining tumor. Patients were also required to have no prior cytotoxic chemotherapy or immunotherapy (except steroids), and have an ECOG performance status of 0 or 1 (KPS ≥ 70%), ANC ≥ 1.5x10<sup>9</sup>/L, platelets ≥ 100x10<sup>9</sup>/L, serum creatinine ≤ 1.5 ULN, total bilirubin ≤ 1.5 ULN, AST/ALT ≤ 2.5 ULN and CEA within normal limits at time of randomization.

The baseline demographics for XELODA and 5-FU/LV patients are shown in **Table 10**. The baseline characteristics were well-balanced between arms.

**Table 10 Baseline Demographics**

	<b>XELODA (n=1004)</b>	<b>5-FU/LV (n=983)</b>
Age (median, years)	62	63
Range	(25-80)	(22-82)
Gender		
Male (n, %)	542 (54)	532 (54)
Female (n, %)	461 (46)	451 (46)
ECOG PS		
0 (n, %)	849 (85)	830 (85)
1 (n, %)	152 (15)	147 (15)
Staging – Primary Tumor		
PT1 (n, %)	12 (1)	6 (0.6)
PT2 (n, %)	90 (9)	92 (9)
PT3 (n, %)	763 (76)	746 (76)
PT4 (n, %)	138 (14)	139 (14)
Other (n, %)	1 (0.1)	0 (0)
Staging – Lymph Node		
pN1 (n, %)	695 (69)	694 (71)
pN2 (n, %)	305 (30)	288 (29)
Other (n, %)	4 (0.4)	1 (0.1)

All patients with normal renal function or mild renal impairment began treatment at the full starting dose of 1250 mg/m<sup>2</sup> orally twice daily. The starting dose was reduced in patients with moderate renal impairment (calculated creatinine clearance 30 to 50 mL/min) at baseline [see *Dosage and Administration (2.3)*]. Subsequently, for all patients, doses were adjusted when needed according to toxicity. Dose management for XELODA included dose reductions, cycle delays and treatment interruptions (see **Table 11**).

**Table 11 Summary of Dose Modifications in X-ACT Study**

	<b>XELODA N = 995</b>	<b>5-FU/LV N = 974</b>
Median relative dose intensity (%)	93	92
Patients completing full course of treatment (%)	83	87
Patients with treatment interruption (%)	15	5
Patients with cycle delay (%)	46	29
Patients with dose reduction (%)	42	44
Patients with treatment interruption, cycle delay, or dose reduction (%)	57	52

The median follow-up at the time of the analysis was 83 months (6.9 years). The hazard ratio for DFS for XELODA compared to 5-FU/LV was 0.88 (95% C.I. 0.77 – 1.01) (see **Table 12** and **Figure 1**). Because the upper 2-sided 95% confidence limit of hazard ratio was less than 1.20, XELODA was non-inferior to 5-FU/LV. The choice of the non-inferiority margin of 1.20 corresponds to the retention of approximately 75% of the 5-FU/LV effect on DFS. The hazard ratio for XELODA compared to 5-FU/LV with respect to overall survival was 0.86 (95% C.I. 0.74 – 1.01). The 5-year overall survival rates were 71.4% for XELODA and 68.4% for 5-FU/LV (see **Figure 2**).

**Table 12 Efficacy of XELODA vs 5-FU/LV in Adjuvant Treatment of Colon Cancer<sup>a</sup>**

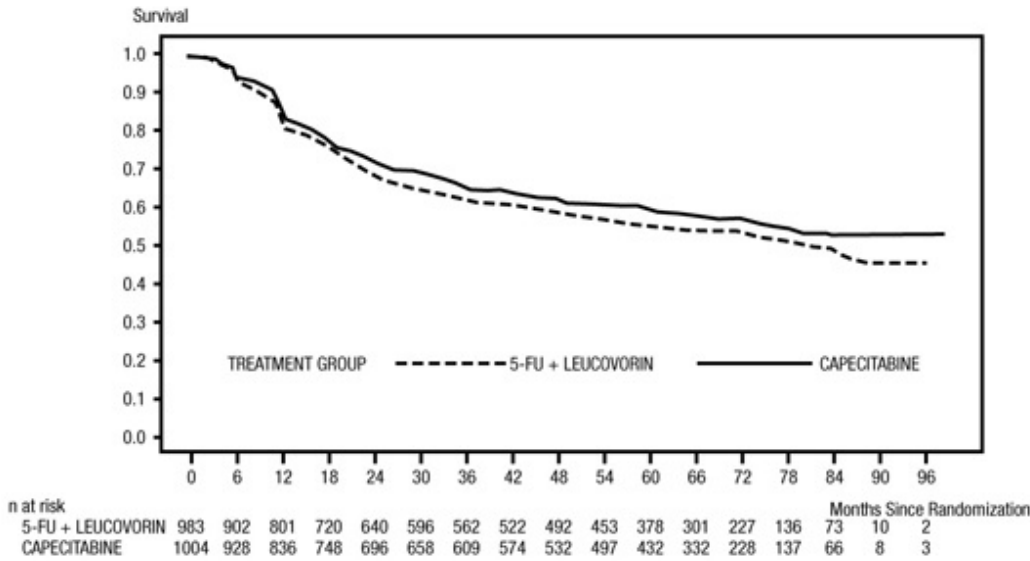
<i>All Randomized Population</i>	<b>XELODA (n=1004)</b>	<b>5-FU/LV (n=983)</b>
<b>Median follow-up (months)</b>	83	83
<b>5-year Disease-free Survival Rates (%)<sup>b</sup></b>	59.1	54.6
Hazard Ratio (XELODA/5-FU/LV) (95% C.I. for Hazard Ratio) p-value <sup>c</sup>	0.88 (0.77 - 1.01)  p = 0.068	

<sup>a</sup>Approximately 93.4% had 5-year DFS information

<sup>b</sup>Based on Kaplan-Meier estimates

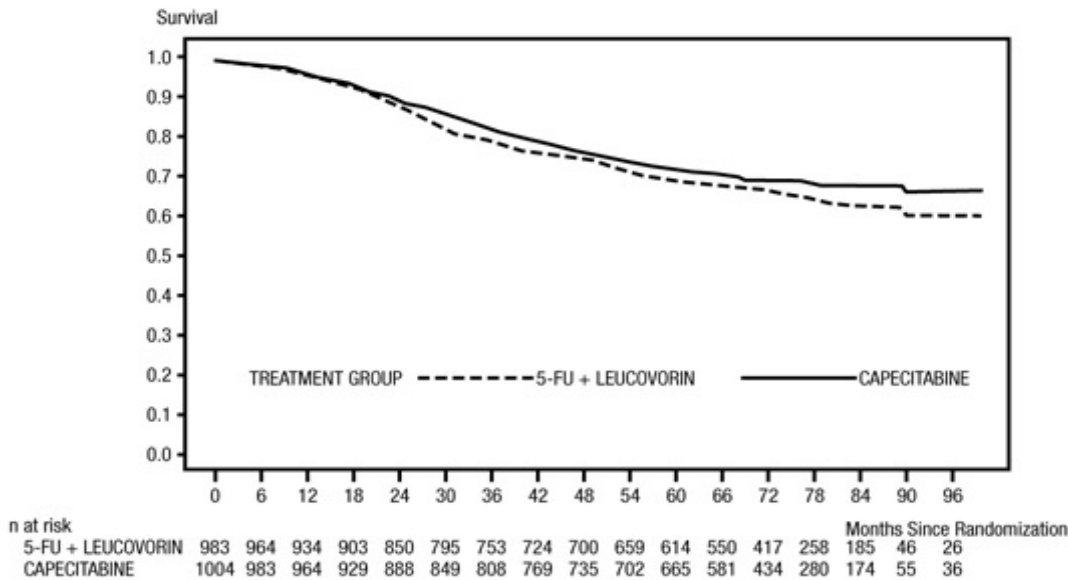
<sup>c</sup>Test of superiority of XELODA vs 5-FU/LV (Wald chi-square test)

**Figure 1** Kaplan-Meier Estimates of Disease-Free Survival (All Randomized Population)<sup>a</sup>



<sup>a</sup>XELODA has been demonstrated to be non-inferior to 5-FU/LV.

**Figure 2** Kaplan-Meier Estimates of Overall Survival (All Randomized Population)



## 14.2 Metastatic Colorectal Cancer

### General

The recommended dose of XELODA was determined in an open-label, randomized clinical study, exploring the efficacy and safety of continuous therapy with capecitabine (1331 mg/m<sup>2</sup>/day in two divided doses, n=39), intermittent therapy with capecitabine (2510 mg/m<sup>2</sup>/day in two divided doses, n=34), and intermittent therapy with capecitabine in combination with oral leucovorin (LV) (capecitabine 1657 mg/m<sup>2</sup>/day in two divided doses, n=35; leucovorin 60 mg/day) in patients with advanced and/or metastatic colorectal carcinoma in the first-line metastatic setting. There was no apparent advantage in response rate to adding leucovorin to XELODA; however, toxicity was increased. XELODA, 1250 mg/m<sup>2</sup> twice daily for 14 days followed by a 1-

week rest, was selected for further clinical development based on the overall safety and efficacy profile of the three schedules studied.

### Monotherapy

Data from two open-label, multicenter, randomized, controlled clinical trials involving 1207 patients support the use of XELODA in the first-line treatment of patients with metastatic colorectal carcinoma. The two clinical studies were identical in design and were conducted in 120 centers in different countries. Study 1 was conducted in the US, Canada, Mexico, and Brazil; Study 2 was conducted in Europe, Israel, Australia, New Zealand, and Taiwan. Altogether, in both trials, 603 patients were randomized to treatment with XELODA at a dose of 1250 mg/m<sup>2</sup> twice daily for 2 weeks followed by a 1-week rest period and given as 3-week cycles; 604 patients were randomized to treatment with 5-FU and leucovorin (20 mg/m<sup>2</sup> leucovorin IV followed by 425 mg/m<sup>2</sup> IV bolus 5-FU, on days 1 to 5, every 28 days).

In both trials, overall survival, time to progression and response rate (complete plus partial responses) were assessed. Responses were defined by the World Health Organization criteria and submitted to a blinded independent review committee (IRC). Differences in assessments between the investigator and IRC were reconciled by the sponsor, blinded to treatment arm, according to a specified algorithm. Survival was assessed based on a non-inferiority analysis.

The baseline demographics for XELODA and 5-FU/LV patients are shown in **Table 13**.

**Table 13 Baseline Demographics of Controlled Colorectal Trials**

	Study 1		Study 2	
	XELODA (n=302)	5-FU/LV (n=303)	XELODA (n=301)	5-FU/LV (n=301)
Age (median, years)	64	63	64	64
Range	(23-86)	(24-87)	(29-84)	(36-86)
Gender				
Male (%)	181 (60)	197 (65)	172 (57)	173 (57)
Female (%)	121 (40)	106 (35)	129 (43)	128 (43)
Karnofsky PS (median)	90	90	90	90
Range	(70-100)	(70-100)	(70-100)	(70-100)
Colon (%)	222 (74)	232 (77)	199 (66)	196 (65)
Rectum (%)	79 (26)	70 (23)	101 (34)	105 (35)
Prior radiation therapy (%)	52 (17)	62 (21)	42 (14)	42 (14)
Prior adjuvant 5-FU (%)	84 (28)	110 (36)	56 (19)	41 (14)

The efficacy endpoints for the two phase 3 trials are shown in **Table 14** and **Table 15**.

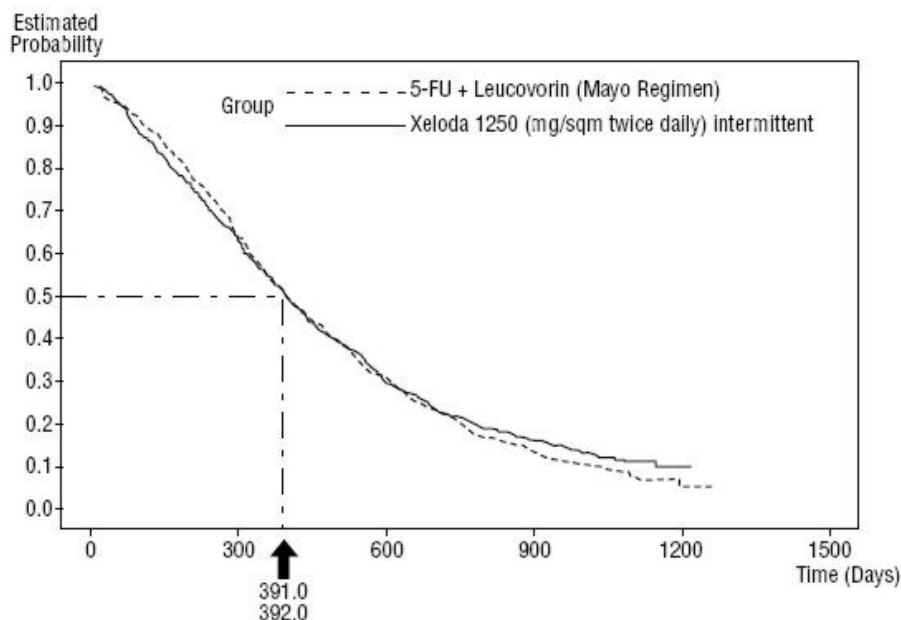
**Table 14 Efficacy of XELODA vs 5-FU/LV in Colorectal Cancer (Study 1)**

	<b>XELODA (n=302)</b>	<b>5-FU/LV (n=303)</b>
<b>Overall Response Rate</b> (%, 95% C.I.)	21 (16-26)	11 (8-15)
(p-value)	0.0014	
<b>Time to Progression</b> (Median, days, 95% C.I.)	128 (120-136)	131 (105-153)
Hazard Ratio (XELODA/5-FU/LV) 95% C.I. for Hazard Ratio	0.99 (0.84-1.17)	
<b>Survival</b> (Median, days, 95% C.I.)	380 (321-434)	407 (366-446)
Hazard Ratio (XELODA/5-FU/LV) 95% C.I. for Hazard Ratio	1.00 (0.84-1.18)	

**Table 15 Efficacy of XELODA vs 5-FU/LV in Colorectal Cancer (Study 2)**

	<b>XELODA (n=301)</b>	<b>5-FU/LV (n=301)</b>
<b>Overall Response Rate</b> (%, 95% C.I.)	21 (16-26)	14 (10-18)
(p-value)	0.027	
<b>Time to Progression</b> (Median, days, 95% C.I.)	137 (128-165)	131 (102-156)
Hazard Ratio (XELODA/5-FU/LV) 95% C.I. for Hazard Ratio	0.97 (0.82-1.14)	
<b>Survival</b> (Median, days, 95% C.I.)	404 (367-452)	369 (338-430)
Hazard Ratio (XELODA/5-FU/LV) 95% C.I. for Hazard Ratio	0.92 (0.78-1.09)	

**Figure 3**      **Kaplan-Meier Curve for Overall Survival of Pooled Data (Studies 1 and 2)**



XELODA was superior to 5-FU/LV for objective response rate in Study 1 and Study 2. The similarity of XELODA and 5-FU/LV in these studies was assessed by examining the potential difference between the two treatments. In order to assure that XELODA has a clinically meaningful survival effect, statistical analyses were performed to determine the percent of the survival effect of 5-FU/LV that was retained by XELODA. The estimate of the survival effect of 5-FU/LV was derived from a meta-analysis of ten randomized studies from the published literature comparing 5-FU to regimens of 5-FU/LV that were similar to the control arms used in these Studies 1 and 2. The method for comparing the treatments was to examine the worst case (95% confidence upper bound) for the difference between 5-FU/LV and XELODA, and to show that loss of more than 50% of the 5-FU/LV survival effect was ruled out. It was demonstrated that the percent of the survival effect of 5-FU/LV maintained was at least 61% for Study 2 and 10% for Study 1. The pooled result is consistent with a retention of at least 50% of the effect of 5-FU/LV. It should be noted that these values for preserved effect are based on the upper bound of the 5-FU/LV vs XELODA difference. These results do not exclude the possibility of true equivalence of XELODA to 5-FU/LV (see **Table 14**, **Table 15**, and **Figure 3**).

### 14.3 Breast Cancer

XELODA has been evaluated in clinical trials in combination with docetaxel (Taxotere®) and as monotherapy.

#### In Combination With Docetaxel

The dose of XELODA used in the phase 3 clinical trial in combination with docetaxel was based on the results of a phase 1 study, where a range of doses of docetaxel administered in 3-week cycles in combination with an intermittent regimen of XELODA (14 days of treatment, followed by a 7-day rest period) were evaluated. The combination dose regimen was selected based on the tolerability profile of the 75 mg/m<sup>2</sup> administered in 3-week cycles of docetaxel in combination with 1250 mg/m<sup>2</sup> twice daily for 14 days of XELODA administered in 3-week cycles. The approved dose of 100 mg/m<sup>2</sup> of docetaxel administered in 3-week cycles was the control arm of the phase 3 study.

XELODA in combination with docetaxel was assessed in an open-label, multicenter, randomized trial in 75 centers in Europe, North America, South America, Asia, and Australia. A total of 511 patients with metastatic breast cancer resistant to, or recurring during or after an anthracycline-containing therapy, or relapsing during or recurring within 2 years of completing an anthracycline-containing adjuvant therapy were enrolled. Two hundred and fifty-five (255) patients were randomized to receive XELODA 1250 mg/m<sup>2</sup> twice daily for 14 days followed by 1 week without treatment and docetaxel 75 mg/m<sup>2</sup> as a 1-hour intravenous infusion administered in

3-week cycles. In the monotherapy arm, 256 patients received docetaxel 100 mg/m<sup>2</sup> as a 1-hour intravenous infusion administered in 3-week cycles. Patient demographics are provided in **Table 16**.

**Table 16 Baseline Demographics and Clinical Characteristics  
XELODA and Docetaxel Combination vs Docetaxel in  
Breast Cancer Trial**

	<b>XELODA + Docetaxel (n=255)</b>	<b>Docetaxel (n=256)</b>
<i>Age</i> (median, years)	52	51
<i>Karnofsky PS</i> (median)	90	90
<b><i>Site of Disease</i></b>		
Lymph nodes	121 (47%)	125 (49%)
Liver	116 (45%)	122 (48%)
Bone	107 (42%)	119 (46%)
Lung	95 (37%)	99 (39%)
Skin	73 (29%)	73 (29%)
<b><i>Prior Chemotherapy</i></b>		
Anthracycline <sup>1</sup>	255 (100%)	256 (100%)
5-FU	196 (77%)	189 (74%)
Paclitaxel	25 (10%)	22 (9%)
<b><i>Resistance to an Anthracycline</i></b>		
No resistance	19 (7%)	19 (7%)
Progression on anthracycline therapy	65 (26%)	73 (29%)
Stable disease after 4 cycles of anthracycline therapy	41 (16%)	40 (16%)
Relapsed within 2 years of completion of anthracycline-adjuvant therapy	78 (31%)	74 (29%)
Experienced a brief response to anthracycline therapy, with subsequent progression while on therapy or within 12 months after last dose	51 (20%)	50 (20%)
<b><i>No. of Prior Chemotherapy Regimens for Treatment of Metastatic Disease</i></b>		
0	89 (35%)	80 (31%)
1	123 (48%)	135 (53%)
2	43 (17%)	39 (15%)
3	0 (0%)	2 (1%)

<sup>1</sup>Includes 10 patients in combination and 18 patients in monotherapy arms treated with an anthracenedione

XELODA in combination with docetaxel resulted in statistically significant improvement in time to disease progression, overall survival and objective response rate compared to monotherapy with docetaxel as shown in **Table 17**, **Figure 4**, and **Figure 5**.

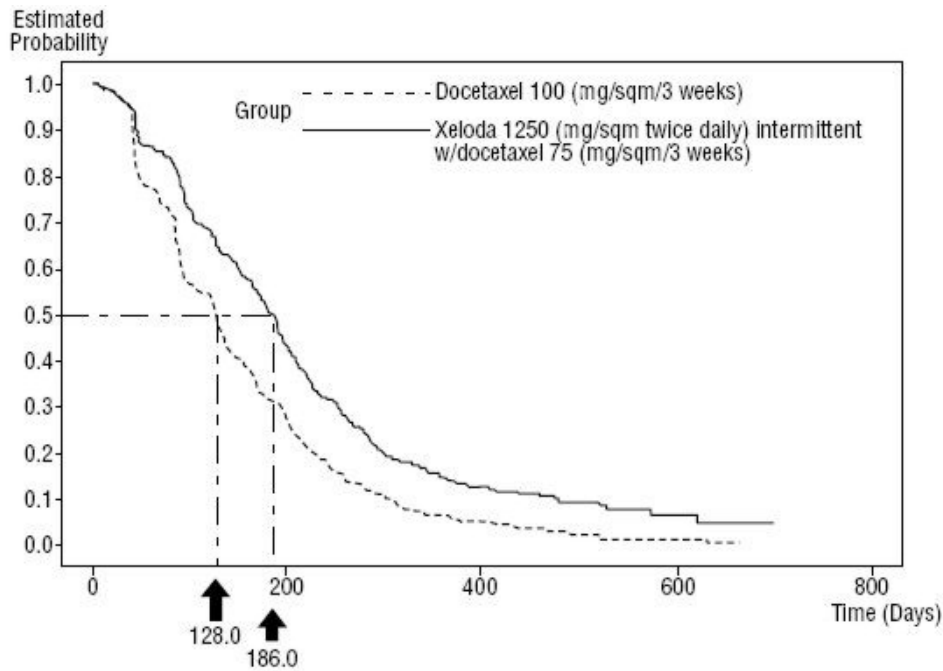
**Table 17 Efficacy of XELODA and Docetaxel Combination vs Docetaxel Monotherapy**

Efficacy Parameter	Combination Therapy	Monotherapy	p-value	Hazard Ratio
<b>Time to Disease Progression</b>				
<b>Median Days</b>	186	128	0.0001	0.643
<b>95% C.I.</b>	(165-198)	(105-136)		
<b>Overall Survival</b>				
<b>Median Days</b>	442	352	0.0126	0.775
<b>95% C.I.</b>	(375-497)	(298-387)		
<b>Response Rate<sup>1</sup></b>	32%	22%	0.009	NA <sup>2</sup>

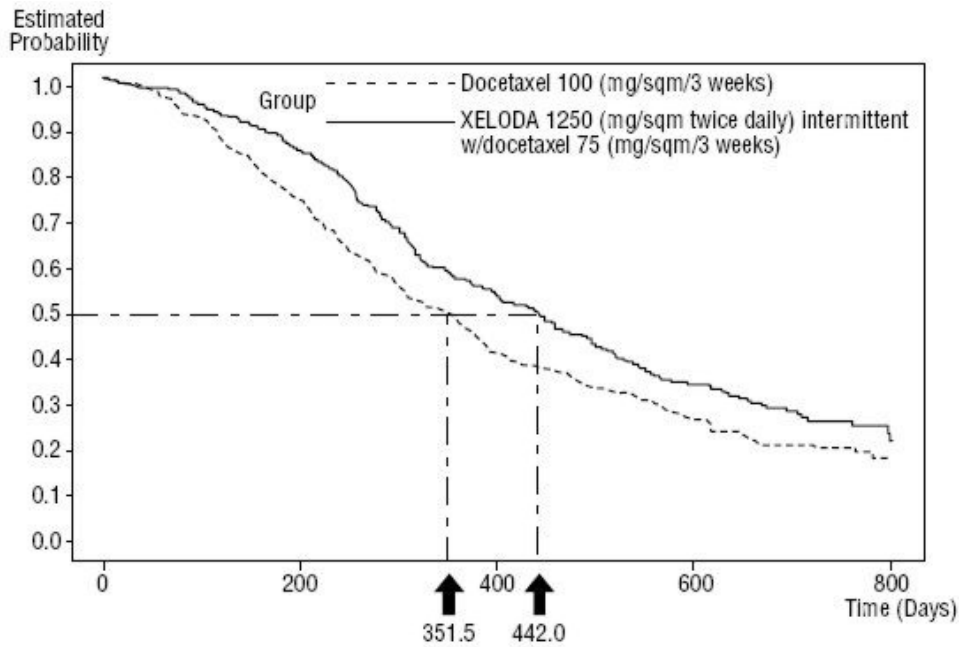
<sup>1</sup> The response rate reported represents a reconciliation of the investigator and IRC assessments performed by the sponsor according to a predefined algorithm.

<sup>2</sup> NA = Not Applicable

**Figure 4 Kaplan-Meier Estimates for Time to Disease Progression XELODA and Docetaxel vs Docetaxel**



**Figure 5 Kaplan-Meier Estimates of Survival XELODA and Docetaxel vs Docetaxel**



Monotherapy

The antitumor activity of XELODA as a monotherapy was evaluated in an open-label single-arm trial conducted in 24 centers in the US and Canada. A total of 162 patients with stage IV breast cancer were enrolled. The primary endpoint was tumor response rate in patients with measurable disease, with response defined as a  $\geq 50\%$  decrease in sum of the products of the perpendicular diameters of bidimensionally measurable disease for at least 1 month. XELODA was administered at a dose of  $1255 \text{ mg/m}^2$  twice daily for 2 weeks followed by a 1-week rest period and given as 3-week cycles. The baseline demographics and clinical characteristics for all patients ( $n=162$ ) and those with measurable disease ( $n=135$ ) are shown in **Table 18**. Resistance was defined as progressive disease while on treatment, with or without an initial response, or relapse within 6 months of completing treatment with an anthracycline-containing adjuvant chemotherapy regimen.

**Table 18 Baseline Demographics and Clinical Characteristics  
Single-Arm Breast Cancer Trial**

	<b>Patients With Measurable Disease (n=135)</b>	<b>All Patients (n=162)</b>
<i>Age</i> (median, years)	55	56
<i>Karnofsky PS</i>	90	90
<i>No. Disease Sites</i>		
1-2	43 (32%)	60 (37%)
3-4	63 (46%)	69 (43%)
>5	29 (22%)	34 (21%)
<i>Dominant Site of Disease</i>		
Visceral <sup>1</sup>	101 (75%)	110 (68%)
Soft Tissue	30 (22%)	35 (22%)
Bone	4 (3%)	17 (10%)
<i>Prior Chemotherapy</i>		
Paclitaxel	135 (100%)	162 (100%)
Anthracycline <sup>2</sup>	122 (90%)	147 (91%)
5-FU	110 (81%)	133 (82%)
Resistance to Paclitaxel	103 (76%)	124 (77%)
Resistance to an Anthracycline <sup>2</sup>	55 (41%)	67 (41%)
Resistance to both Paclitaxel and an Anthracycline <sup>2</sup>	43 (32%)	51 (31%)

<sup>1</sup>Lung, pleura, liver, peritoneum

<sup>2</sup>Includes 2 patients treated with an anthracenedione

Antitumor responses for patients with disease resistant to both paclitaxel and an anthracycline are shown in **Table 19**.

**Table 19 Response Rates in Doubly-Resistant Patients Single-Arm  
Breast Cancer Trial**

	<b>Resistance to Both Paclitaxel and an Anthracycline (n=43)</b>
CR	0
PR <sup>1</sup>	11
CR + PR <sup>1</sup>	11
Response Rate <sup>1</sup> (95% C.I.)	25.6% (13.5, 41.2)
Duration of Response, <sup>1</sup> Median in days <sup>2</sup> (Range)	154 (63-233)

<sup>1</sup>Includes 2 patients treated with an anthracenedione

<sup>2</sup>From date of first response

For the subgroup of 43 patients who were doubly resistant, the median time to progression was 102 days and the median survival was 255 days. The objective response rate in this population was supported by a response rate of 18.5% (1 CR, 24 PRs) in the overall population of 135 patients with measurable disease, who were less resistant to chemotherapy (see **Table 18**). The median time to progression was 90 days and the median survival was 306 days.

## 15 REFERENCES

1. NIOSH Alert: Preventing occupational exposures to antineoplastic and other hazardous drugs in healthcare settings. 2004. U.S. Department of Health and Human Services, Public Health Service, Centers for Disease Control and Prevention, National Institute for Occupational Safety and Health, DHHS (NIOSH) Publication No. 2004-165.
2. OSHA Technical Manual, TED 1-0.15A, Section VI: Chapter 2. Controlling Occupational Exposure to Hazardous Drugs. OSHA, 1999. [http://www.osha.gov/dts/osta/otm/otm\\_vi/otm\\_vi\\_2.html](http://www.osha.gov/dts/osta/otm/otm_vi/otm_vi_2.html)
3. American Society of Health-System Pharmacists. ASHP Guidelines on Handling Hazardous Drugs: *Am J Health-Syst Pharm.* 2006;63:1172-1193.
4. Polovich M., White JM, Kelleher LO (eds). Chemotherapy and biotherapy guidelines and recommendations for practice (2nd ed.) 2005. Pittsburgh, PA: Oncology Nursing Society.

## 16 HOW SUPPLIED/STORAGE AND HANDLING

### 150 mg

Color: Light peach  
Engraving: XELODA on one side and 150 on the other  
150 mg tablets are packaged in bottles of 60 (NDC 0004-1100-20).

### 500 mg

Color: Peach  
Engraving: XELODA on one side and 500 on the other  
500 mg tablets are packaged in bottles of 120 (NDC 0004-1101-50).

### Storage and Handling

Store at 25°C (77°F); excursions permitted to 15° to 30°C (59° to 86°F). [See USP Controlled Room Temperature]. KEEP TIGHTLY CLOSED.

Care should be exercised in the handling of XELODA. XELODA tablets should not be cut or crushed. The use of gloves and safety glasses is recommended to avoid exposure in case of breakage of tablets. If powder from broken XELODA tablets contacts the skin, wash the skin immediately and thoroughly with soap and water. If XELODA contacts the mucous membranes, flush thoroughly with water.

Procedures for the proper handling and disposal of anticancer drugs should be considered. Several guidelines on the subject have been published.<sup>1-4</sup>

## 17 PATIENT COUNSELING INFORMATION

### 17.1 Information for Patients (see Patient Package Insert)

Patients and patients' caregivers should be informed of the expected adverse effects of XELODA, particularly nausea, vomiting, diarrhea, and hand-and-foot syndrome, and should be made aware that patient-specific dose adaptations during therapy are expected and necessary [see *Dosage and Administration (2.2)*]. As described below, patients taking XELODA should be informed of the need to interrupt treatment immediately if moderate or severe toxicity occurs. Patients should be encouraged to recognize the common grade 2 toxicities associated with XELODA treatment.

#### Diarrhea

Patients experiencing grade 2 diarrhea (an increase of 4 to 6 stools/day or nocturnal stools) or greater should be instructed to stop taking XELODA immediately. Standard antidiarrheal treatments (eg, loperamide) are recommended.

### Nausea

Patients experiencing grade 2 nausea (food intake significantly decreased but able to eat intermittently) or greater should be instructed to stop taking XELODA immediately. Initiation of symptomatic treatment is recommended.

### Vomiting

Patients experiencing grade 2 vomiting (2 to 5 episodes in a 24-hour period) or greater should be instructed to stop taking XELODA immediately. Initiation of symptomatic treatment is recommended.

### Hand-and-Foot Syndrome

Patients experiencing grade 2 hand-and-foot syndrome (painful erythema and swelling of the hands and/or feet and/or discomfort affecting the patients' activities of daily living) or greater should be instructed to stop taking XELODA immediately.

### Stomatitis

Patients experiencing grade 2 stomatitis (painful erythema, edema or ulcers of the mouth or tongue, but able to eat) or greater should be instructed to stop taking XELODA immediately. Initiation of symptomatic treatment is recommended [see *Dosage and Administration (2.2)*].

### Fever and Neutropenia

Patients who develop a fever of 100.5°F or greater or other evidence of potential infection should be instructed to call their physician.

## **17.2 Patient Package Insert**

Read this leaflet before you start taking XELODA<sup>®</sup> [zeh-LOE-duh] and each time you refill your prescription in case the information has changed. This leaflet contains important information about XELODA. However, this information does not take the place of talking with your doctor. This information cannot cover all possible risks and benefits of XELODA. Your doctor should always be your first choice for discussing your medical condition and this medicine.

### **What is XELODA?**

XELODA is a medicine you take by mouth (orally). XELODA is changed in the body to 5-fluorouracil (5-FU). In some patients with colon, rectum or breast cancer, 5-FU stops cancer cells from growing and decreases the size of the tumor.

XELODA is used to treat:

- cancer of the colon after surgery
- cancer of the colon or rectum (colorectal cancer) that has spread to other parts of the body (metastatic colorectal cancer). You should know that in studies, other medicines showed improved survival when they were taken together with 5-FU and leucovorin. In studies, XELODA was no worse than 5-FU and leucovorin taken together but did not improve survival compared to these two medicines.
- breast cancer that has spread to other parts of the body (metastatic breast cancer) together with another medicine called docetaxel (TAXOTERE<sup>®</sup>)
- breast cancer that has spread to other parts of the body and has not improved after treatment with other medicines such as paclitaxel (TAXOL<sup>®</sup>) and anthracycline-containing medicine such as Adriamycin<sup>™</sup> and doxorubicin

### **What is the most important information about XELODA?**

XELODA may increase the effect of other medicines used to thin your blood such as warfarin (COUMADIN<sup>®</sup>). It is very important that your doctor knows if you are taking a blood thinner such as warfarin because XELODA may increase the effect of this medicine and could lead to serious side effects. If you are taking blood thinners

and XELODA, your doctor needs to check more often how fast your blood clots and change the dose of the blood thinner, if needed.

### **Who should not take XELODA?**

#### **1. DO NOT TAKE XELODA IF YOU**

- are nursing a baby. Tell your doctor if you are nursing. XELODA may pass to the baby in your milk and harm the baby.
- are allergic to 5-fluorouracil
- are allergic to capecitabine or to any of the ingredients in XELODA
- have been told that you lack the enzyme DPD (dihydropyrimidine dehydrogenase)

#### **2. TELL YOUR DOCTOR IF YOU**

- take a blood thinner such as warfarin (COUMADIN). This is very important because XELODA may increase the effect of the blood thinner. If you are taking blood thinners and XELODA, your doctor needs to check more often how fast your blood clots and change the dose of the blood thinner, if needed.
- take phenytoin (DILANTIN®). Your doctor needs to test the levels of phenytoin in your blood more often or change your dose of phenytoin.
- are pregnant or think you may be pregnant. XELODA may harm your unborn child.
- have kidney problems. Your doctor may prescribe a different medicine or lower the XELODA dose.
- have liver problems. You may need to be checked for liver problems while you take XELODA.
- have heart problems because you could have more side effects related to your heart.
- take the vitamin folic acid. It may affect how XELODA works.

### **How should I take XELODA?**

Take XELODA exactly as your doctor tells you to. Your doctor will prescribe a dose and treatment plan that is right for *you*. Your doctor may want you to take both 150 mg and 500 mg tablets together for each dose. If so, you must be able to identify the tablets. Taking the wrong tablets could cause an overdose (too much medicine) or underdose (too little medicine). The 150 mg tablets are light peach in color with 150 on one side. The 500 mg tablets are peach in color with 500 on one side. Your doctor may change the amount of medicine you take during your treatment. Your doctor may prescribe XELODA Tablets with docetaxel (TAXOTERE) injection.

- XELODA is taken in 2 daily doses, a morning dose and an evening dose
- Take XELODA tablets **within 30 minutes after the end of a meal** (breakfast and dinner)
- **Swallow XELODA tablets whole with water**
- If you miss a dose of XELODA, do not take the missed dose at all and do not double the next dose. Instead, continue your regular dosing schedule and check with your doctor.
- XELODA is usually taken for 14 days followed by a 7-day rest period (no drug), for a 21-day cycle. Your doctor will tell you how many cycles of treatment you will need.
- If you take too much XELODA, contact your doctor or local poison control center or emergency room **right away**.

### **What should I avoid while taking XELODA?**

- Women should not become pregnant while taking XELODA. XELODA may harm your unborn child. Use effective birth control while taking XELODA. Tell your doctor if you become pregnant.
- Do not breast-feed. XELODA may pass through your milk and harm your baby.
- Men should use birth control while taking XELODA

### **What are the most common side effects of XELODA?**

The most common side effects of XELODA are:

- diarrhea, nausea, vomiting, sores in the mouth and throat (stomatitis), stomach area pain (abdominal pain), upset stomach, constipation, loss of appetite, and too much water loss from the body (dehydration). These side effects are more common in patients age 80 and older.

- hand-and-foot syndrome (palms of the hands or soles of the feet tingle, become numb, painful, swollen or red), rash, dry, itchy or discolored skin, nail problems, and hair loss
- tiredness, weakness, dizziness, headache, fever, pain (including chest, back, joint, and muscle pain), trouble sleeping, and taste problems

These side effects may differ when taking XELODA with docetaxel (TAXOTERE). Please consult your doctor for possible side effects that may be caused by taking XELODA with docetaxel (TAXOTERE).

If you are concerned about these or any other side effects while taking XELODA, talk to your doctor.

**Stop taking XELODA immediately and contact your doctor right away** if you have the side effects listed below, or other side effects that concern you. Your doctor can then adjust XELODA to a dose that is right for you or stop your XELODA treatment for a while. This should help to reduce the side effects and stop them from getting worse.

- **Diarrhea:** if you have an additional 4 bowel movements each day beyond what is normal or any diarrhea at night
- **Vomiting:** if you vomit more than once in a 24-hour time period
- **Nausea:** if you lose your appetite, and the amount of food you eat each day is much less than usual
- **Stomatitis:** if you have pain, redness, swelling or sores in your mouth
- **Hand-and-Foot Syndrome:** if you have pain, swelling or redness of your hands or feet that prevents normal activity
- **Fever or Infection:** if you have a temperature of 100.5°F or greater, or other signs of infection

Your doctor may tell you to lower the dose or to stop XELODA treatment for a while. If caught early, most of these side effects usually improve after you stop taking XELODA. If they do not improve within 2 to 3 days, call your doctor again. After your side effects have improved, your doctor will tell you whether to start taking XELODA again and what dose to take. Adjusting the dose of XELODA to be right for each patient is an important part of treatment.

### **How should I store and use XELODA?**

- Never share XELODA with anyone
- Store XELODA at normal room temperature (about 65° to 85°F)
- Keep XELODA and all other medicines out of the reach of children
- If you take too much XELODA by mistake, contact your doctor or local poison control center or emergency room **right away**

### **General advice about prescription medicines:**

Medicines are sometimes prescribed for conditions that are not mentioned in patient information leaflets. Do not use XELODA for a condition for which it was not prescribed. Do not give XELODA to other people, even if they have the same symptoms you have. It may harm them.

This leaflet summarizes the most important information about XELODA. If you would like more information, talk with your doctor. You can ask your pharmacist or doctor for information about XELODA that is written for health professionals.

XELODA is a registered trademark of Hoffmann-La Roche Inc.

For full TAXOTERE prescribing information, please refer to TAXOTERE Package Insert.

Distributed by:

**Genentech USA, Inc.**

A Member of the Roche Group

1 DNA Way

South San Francisco, CA 94080-4990

XAT\_091978\_PI\_2010\_03(K)

Revised: February 2011

© 2011 Genentech, Inc. All rights reserved.