

Chemical Logistics – Reach chemical industry professionals interested in logistics

- Reach an audience formed of Purchasing & Logistics Managers, Chemical Producers, Chemical Distributors, Legislative & Environmental Experts and IT & E-commerce Experts.
- Deliver your marketing message directly to the inboxes of your target audience

Description

Circulation: 3,200

Frequency: Monthly

Content: Chemical Logistics e-newsletter covers the main issues, news and latest developments of this niche sector including supply chain disruptions, people movements and financial stories.

Advertising opportunities

Ad unit	Size (px)	Price for single e-newsletter \$
Top Banner	468 x 60	995
Skyscraper	120 x 600	995
Advertorial	50 words + heading	995
Mid banner	468 x 60	995
Mid MPU	300 x 250	995
Supplier News	8 word link	300
Solus Sponsorship	As above	2,400

Note: Price for a single e-newsletter as at July 2009. Subject to change depending on circulation of e-newsletter. Minimum rate of \$995 applies to this e-newsletter.

Advertising delivery requirements

Advertisements and/or copy must be submitted to e-marketing.operations@rbi.co.uk at least five (5) business days before scheduled sponsorship. GIF, animated GIF and JPEG images are accepted. Rich media files are not accepted. File size should not exceed 30k. All advertisements should be accompanied by a text equivalent in order to be seen by all subscribers (200 characters).

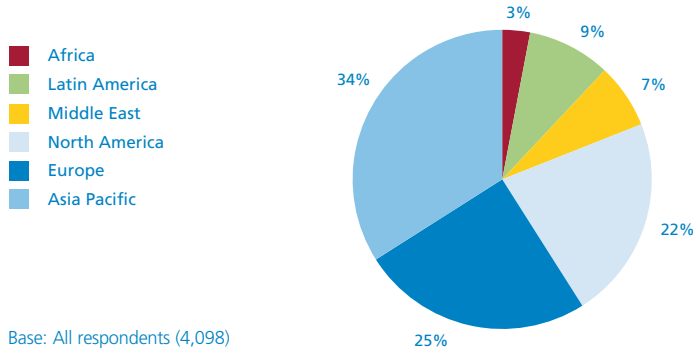
Either the mid MPU or mid banner will feature in the newsletter (see left)

All advertisements are accepted subject to RBI's standard terms and conditions which can be found at www.reedbusiness.co.uk/adtermsandconditions



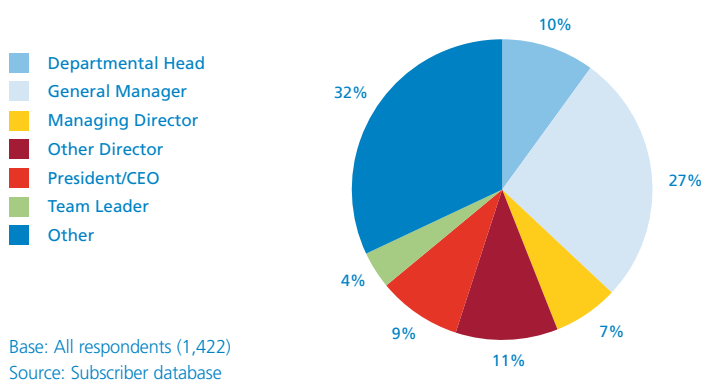
Chemical Logistics – Reach chemical industry professionals interested in logistics

World Region



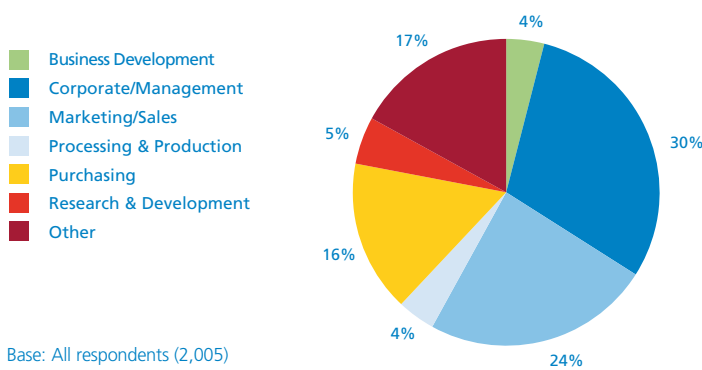
Base: All respondents (4,098)
Source: Subscriber database

Job Status



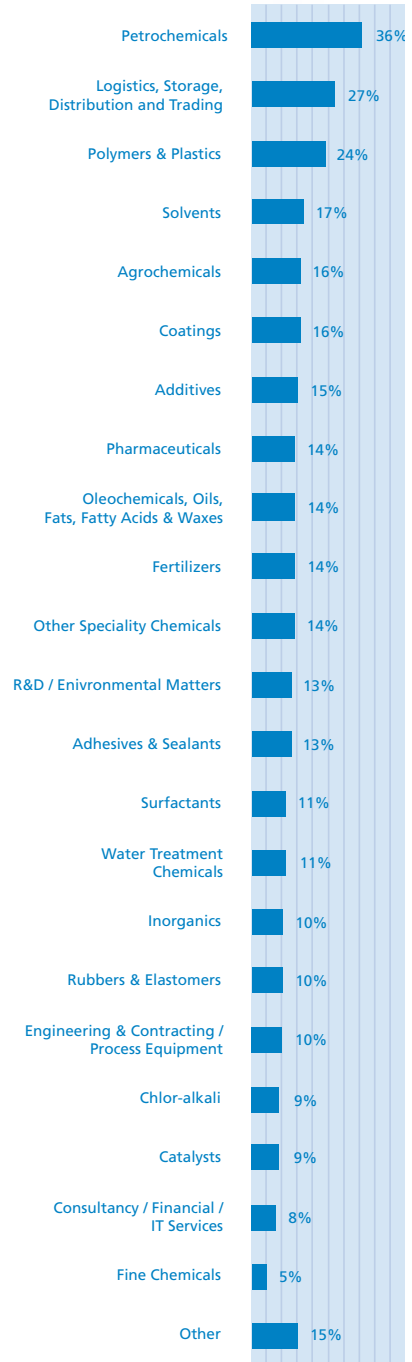
Base: All respondents (1,422)
Source: Subscriber database

Job Function



Base: All respondents (2,005)
Source: Subscriber database

Activity Area



Base: All respondents (3,221)
Source: Subscriber database